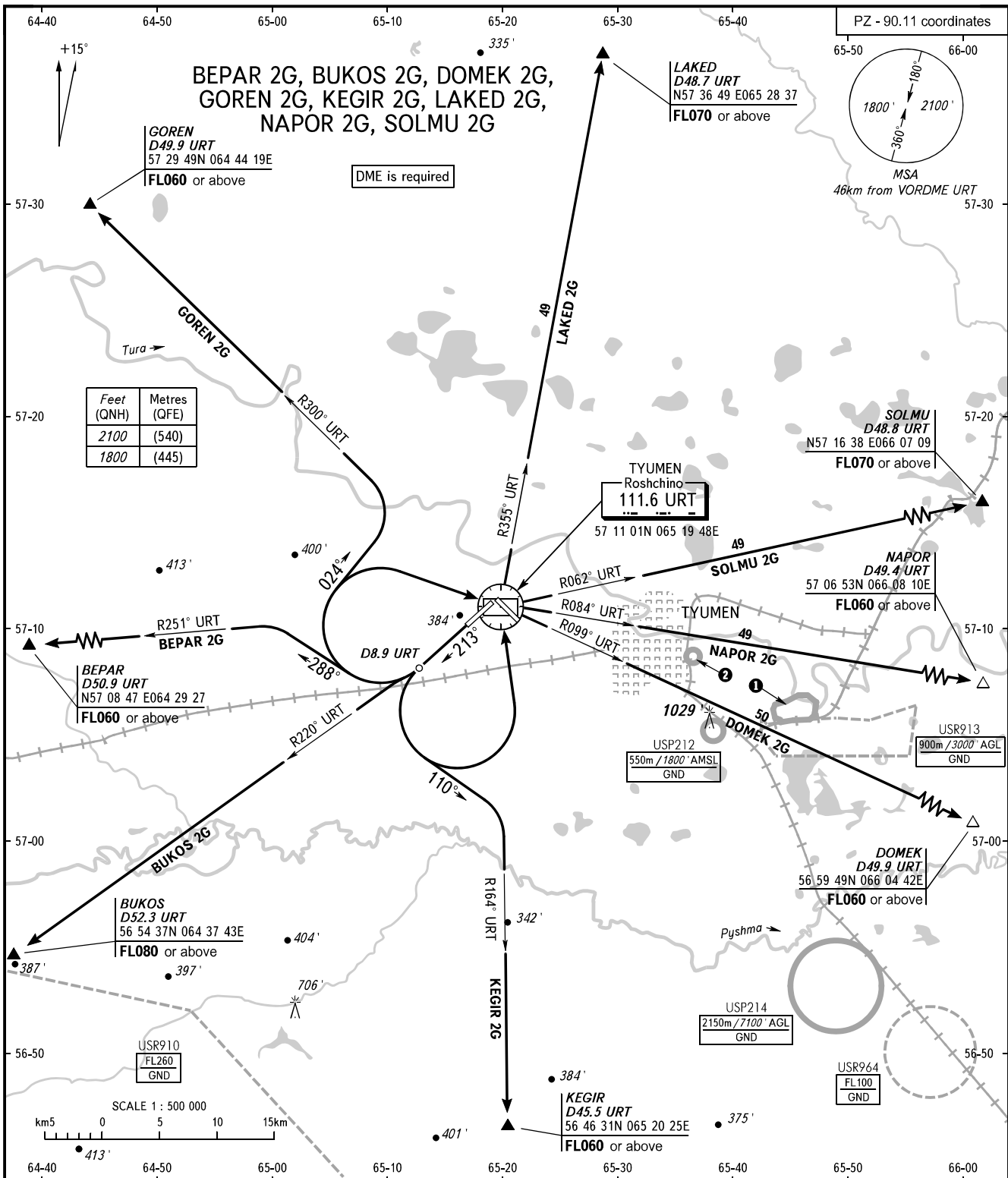


STANDARD DEPARTURE CHART  
INSTRUMENT (SID) - ICAO

TRANSITION  
ALTITUDE : 3000'

TYUMEN, RUSSIA  
ROSHCHINO  
RWY 21



RADAR START 126.100  
118.200

- WARNING:**
1. Turn before passing DER is PROHIBITED.
  2. There are close-in obstacles with MAX ELEV 450'.
  3. The minimum climb gradients (required due to the airspace structure only) are as follows:
    - 3.9% up to FL060 for SID GOREN 2G;
    - 4.8% up to FL080 for SID BUKOS 2G;
    - 5.3% up to FL060 for SID KEGIR 2G.

BEARINGS AND TRACKS ARE MAGNETIC  
ALTITUDES AND ELEVATIONS IN FEET  
DISTANCES IN KILOMETRES

Alt set: -QNH(QFE on req);  
-hPa(mm on req).

① USP223  
900m / 3000' AGL  
GND

② USP211  
550m / 1800' AMSL  
GND