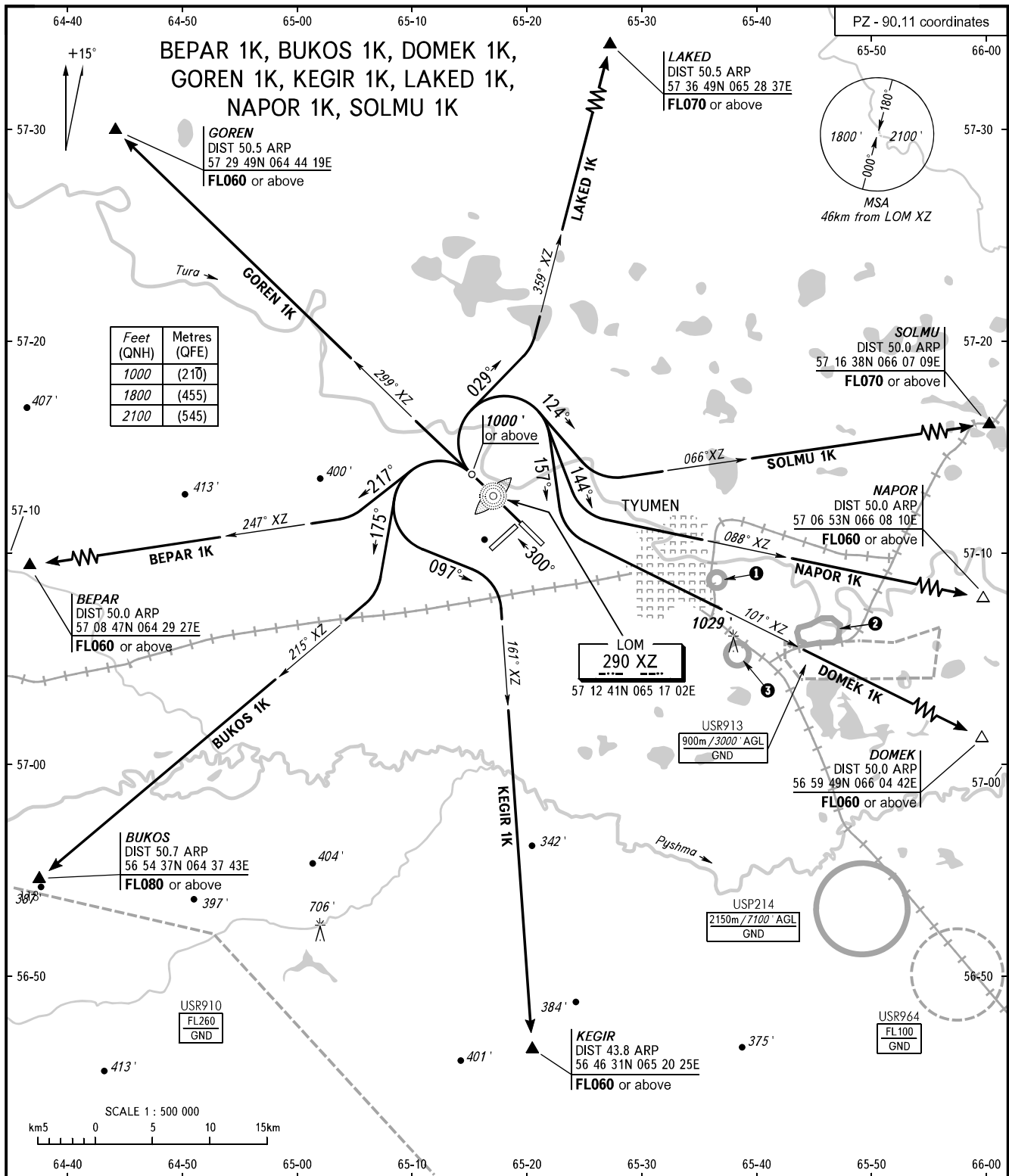


STANDARD DEPARTURE CHART  
INSTRUMENT (SID) - ICAO

TRANSITION  
ALTITUDE : 3000'

TYUMEN, RUSSIA  
ROSHCHINO  
RWY 30



START 118.200  
RADAR 126.100

**WARNING:**

1. Turn before passing DER is PROHIBITED.
2. The minimum climb gradients (required due to the airspace structure only) are as follows:
  - 3.9% up to FL070 for SID LAKED 1K;
  - 3.7% up to FL080 for SID BUKOS 1K;
  - 3.6% up to FL060 for SID GOREN 1K.

BEARINGS AND TRACKS ARE MAGNETIC  
ALTITUDES AND ELEVATIONS IN **FEET**  
DISTANCES IN KILOMETRES

Alt set: -QNH(QFE on req);  
-hPa(mm on req).

**1** USP211  
550m / 1800' AMSL  
GND

**2** USP223  
900m / 3000' AGL  
GND

**3** USP212  
550m / 1800' AMSL  
GND