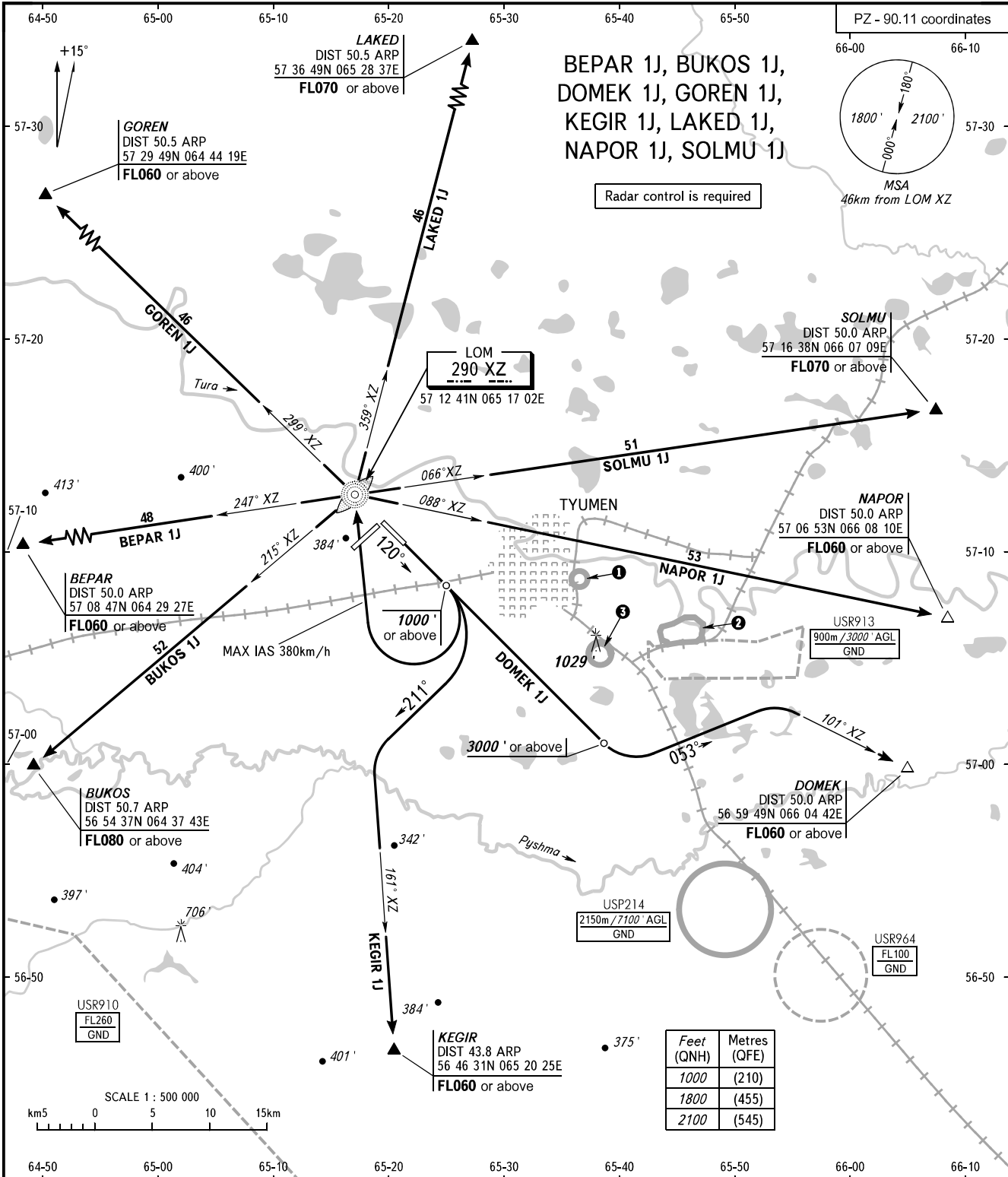


STANDARD DEPARTURE CHART
INSTRUMENT (SID) - ICAO

TYUMEN, RUSSIA
ROSHCHINO
RWY 12

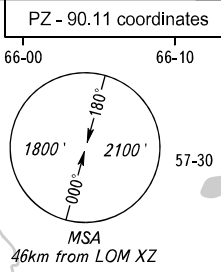
TRANSITION
ALTITUDE : 3000'



BEPAR 1J, BUKOS 1J,
DOMEK 1J, GOREN 1J,
KEGIR 1J, LAKED 1J,
NAPOR 1J, SOLMU 1J

Radar control is required

LOM
290 XZ
57 12 41N 065 17 02E



START 118.200
RADAR 126.100

WARNING
Turn before passing DER is PROHIBITED.

- 1 USP211
550m / 1800' AMSL
GND
- 2 USP212
900m / 3000' AGL
GND
- 3 USP212
550m / 1800' AMSL
GND

CHANGE: New chart

BEARINGS AND TRACKS ARE MAGNETIC
ALTITUDES AND ELEVATIONS IN FEET
DISTANCES IN KILOMETRES

Alt set: -QNH(QFE on req);
-hPa(mm on req).