

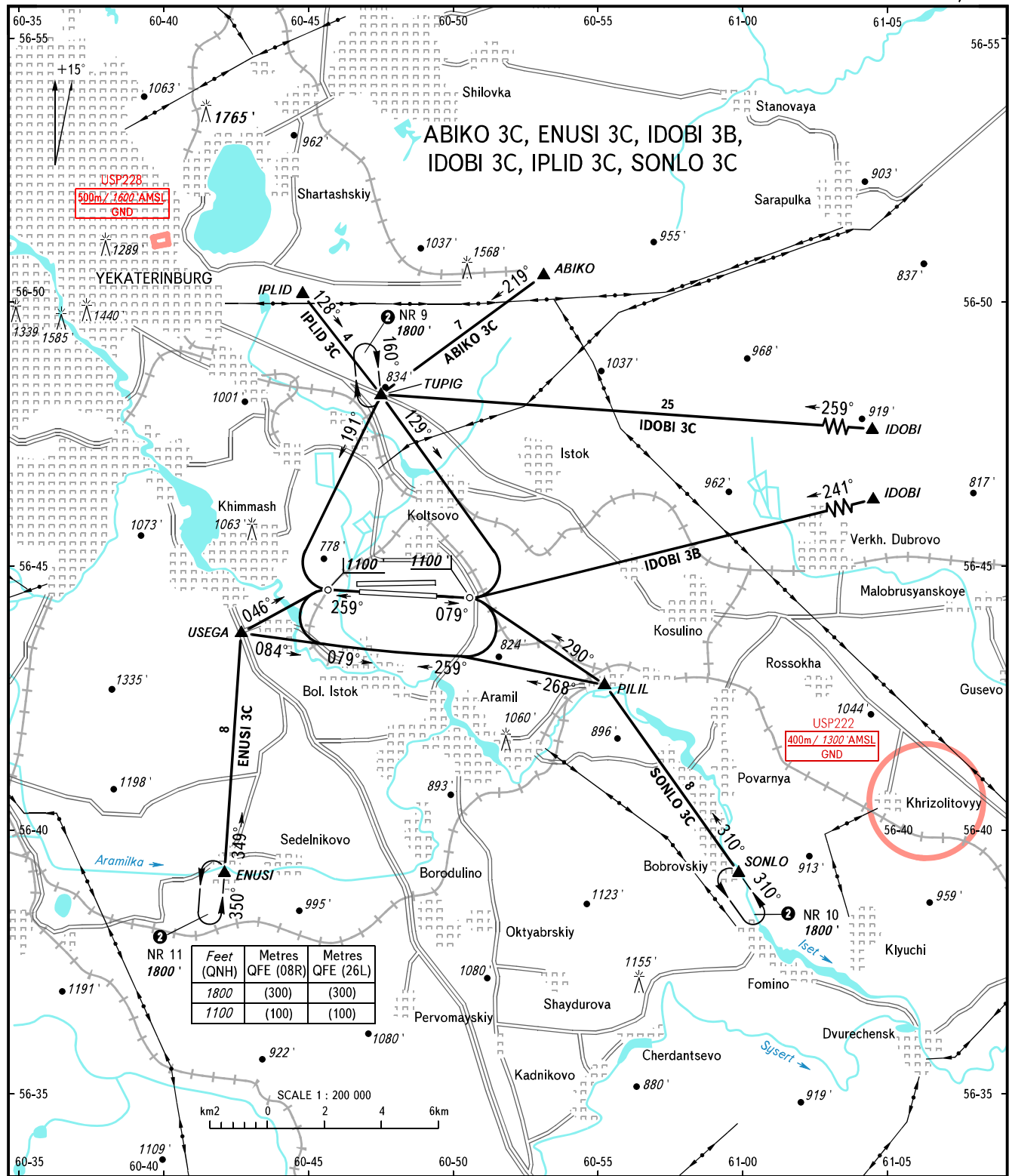
YEKATERINBURG, RUSSIA

KOLTSOVO

RWY 08R/26L

VFR
ARRIVAL
CHART

TRANSITION
LEVEL : ①



Feet (QNH)	Metres QFE (08R)	Metres QFE (26L)
1800	(300)	(300)
1100	(100)	(100)

KOLTSOVO RADAR 118.700
KOLTSOVO START 124.300

- ① TRANSITION LEVEL:
- FL050 when QNH is 1013 hPa (760mm mercury column) or above;
 - FL060 when QNH is 977 hPa (733mm mercury column) or above, but less than 1013 hPa (760mm mercury column);
 - FL070 when QNH is less than 977 hPa (733mm mercury column).

BEARINGS AND TRACKS ARE MAGNETIC
ALTITUDES AND ELEVATIONS IN FEET
DISTANCES IN KILOMETRES

- WARNING:**
1. Arrival route is assigned by ATS unit.
 2. Arrival route IDOBI 3B is AVBL by coordination with ATS unit.
 3. Missed approach for the repeated approach:
 - when RWY 08R is active: Climb to 1100' (100), turn LEFT to CRP TUPIG (holding area NR 9) climbing to 1800' (300) on track 309°, then according to approach chart;
 - when RWY 26L is active: Climb to 1100' (100), turn RIGHT to CRP TUPIG (holding area NR 9) climbing to 1800' (300) on track 011°, then according to approach chart.
 - ② Exit from holding areas NR 9, 10, 11 is cleared and provided via the assigned tracks (by vectoring) by Koltsovo-Radar controller.

CHANGE: New chart