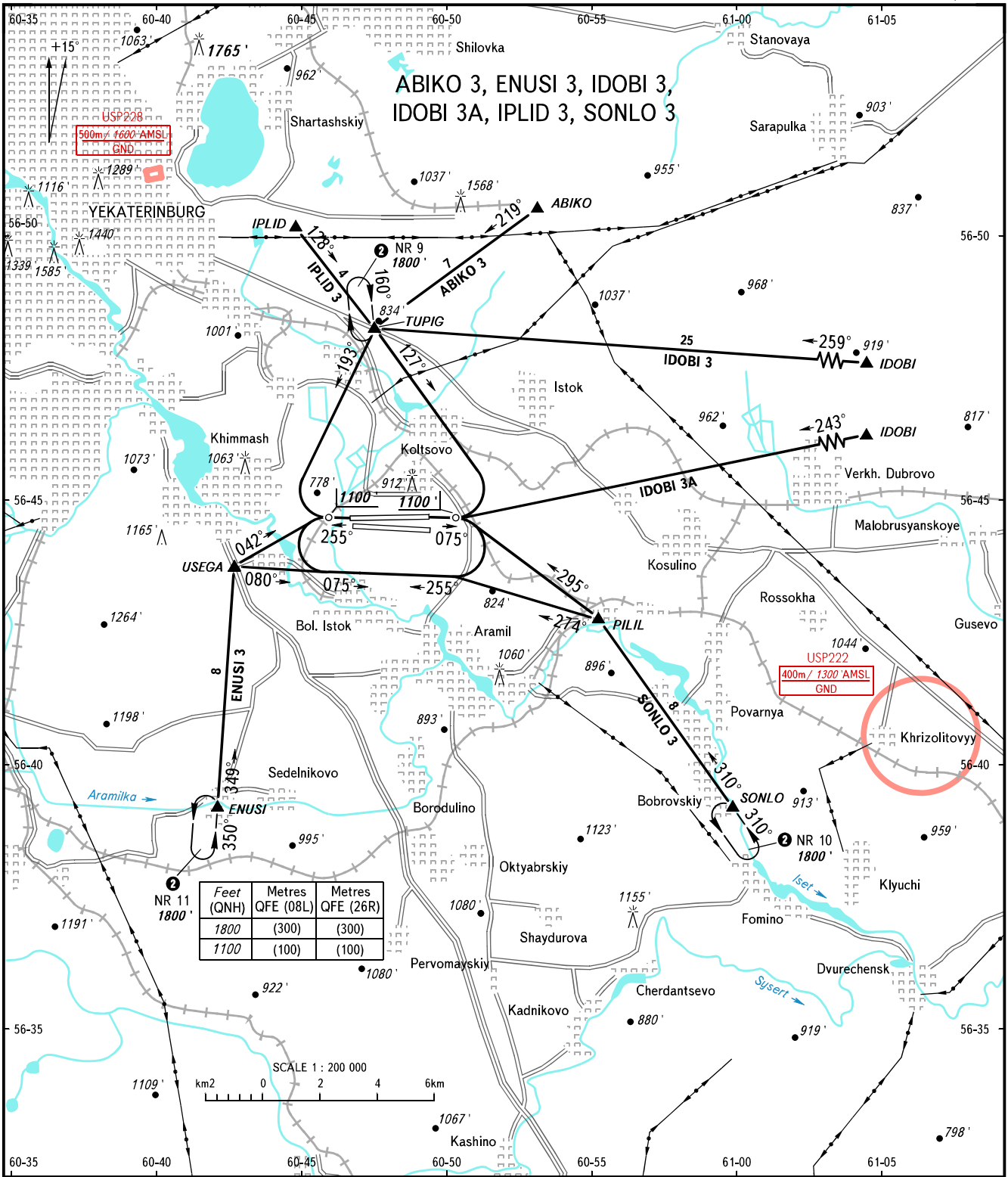


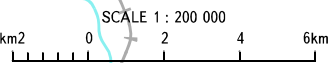
VFR  
ARRIVAL  
CHART

YEKATERINBURG, RUSSIA  
KOLTSOVO  
RWY 08L/26R

TRANSITION  
LEVEL : ①



	Feet (QNH)	Metres QFE (08L)	Metres QFE (26R)
NR 11	1800	(300)	(300)
	1100	(100)	(100)



**① TRANSITION LEVEL:**  
 - FL050 when QNH is 1013 hPa (760mm mercury column) or above;  
 - FL060 when QNH is 977 hPa (733mm mercury column) or above, but less than 1013 hPa (760mm mercury column);  
 - FL070 when QNH is less than 977 hPa (733mm mercury column).

BEARINGS AND TRACKS ARE MAGNETIC  
 ALTITUDES AND ELEVATIONS IN FEET  
 DISTANCES IN KILOMETRES

**WARNING:**  
 1. Arrival route is assigned by ATS unit.  
 2. Arrival route IDOBI 3A is AVBL by coordination with ATS unit.  
 3. Missed approach for the repeated approach:  
 - when RWY 08L is active: Climb to 1100' (100), turn LEFT to CRP TUPIG (holding area NR 9) climbing to 1800' (300) on track 307°, then according to approach chart;  
 - when RWY 26R is active: Climb to 1100' (100), turn RIGHT to CRP TUPIG (holding area NR 9) climbing to 1800' (300) on track 013°, then according to approach chart.  
 ② Exit from holding areas NR 9, 10, 11 is cleared and provided via the assigned tracks (by vectoring) by Koltsovo-Radar controller.

CHANGE: New chart