

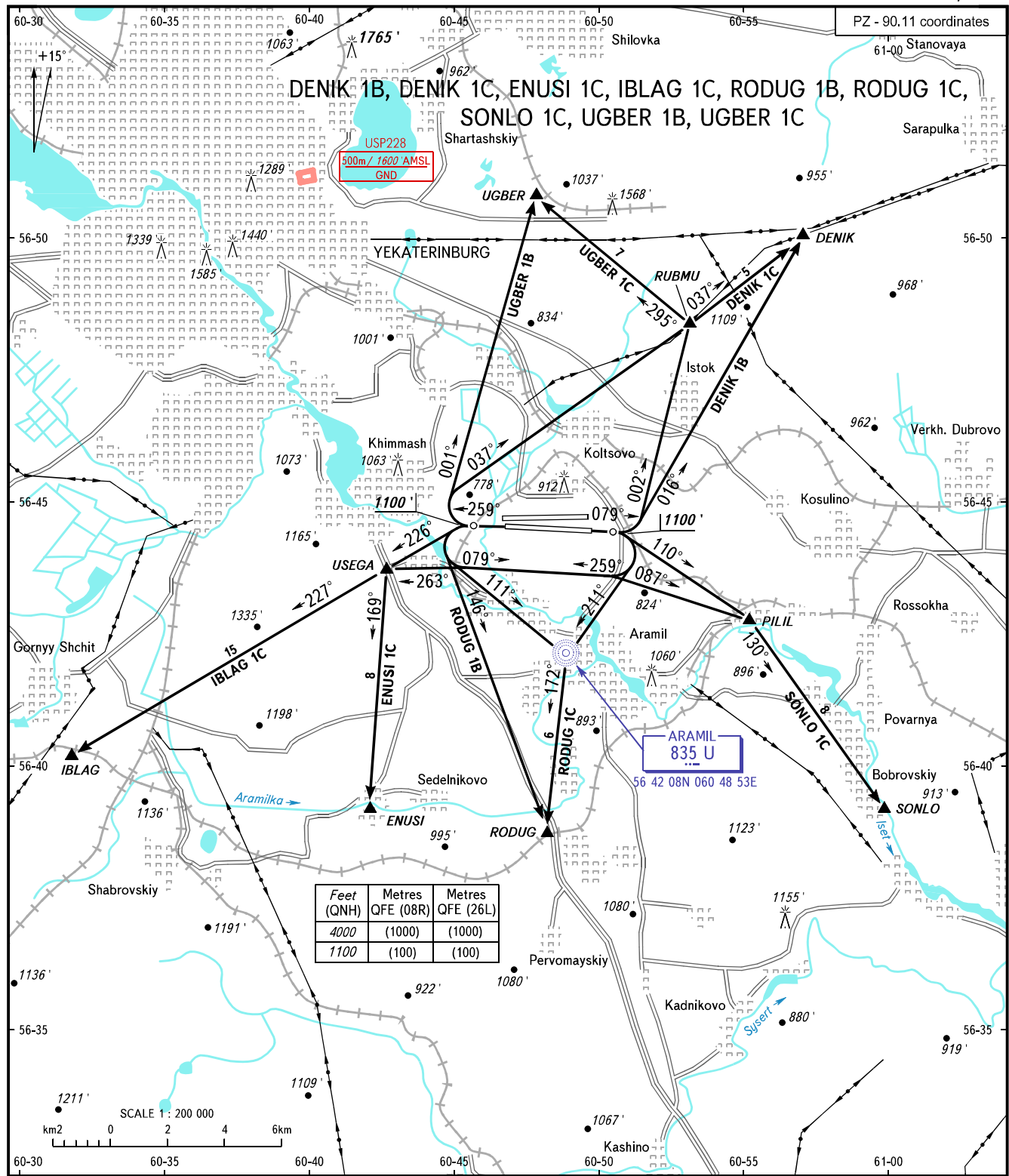
VFR DEPARTURE CHART

YEKATERINBURG, RUSSIA

KOLTSOVO

RWY 08R/26L

TRANSITION ALTITUDE : 4000'



Feet (QNH)	Metres QFE (08R)	Metres QFE (26L)
4000	(1000)	(1000)
1100	(100)	(100)

KOLTSOVO RADAR 118.700  
 KOLTSOVO START 124.300

- WARNING:**
1. Departure route is assigned by ATS unit.
  2. The initial turn to CRP RUBMU, DENIK shall be executed not earlier than reaching the opposite runway extremity.
  3. Departure routes RODUG 1B and RODUG 1C are assigned when there are no flights at Yekaterinburg/Aramil AD.

BEARINGS AND TRACKS ARE MAGNETIC  
 ALTITUDES AND ELEVATIONS IN FEET  
 DISTANCES IN KILOMETRES

CHANGE: New chart