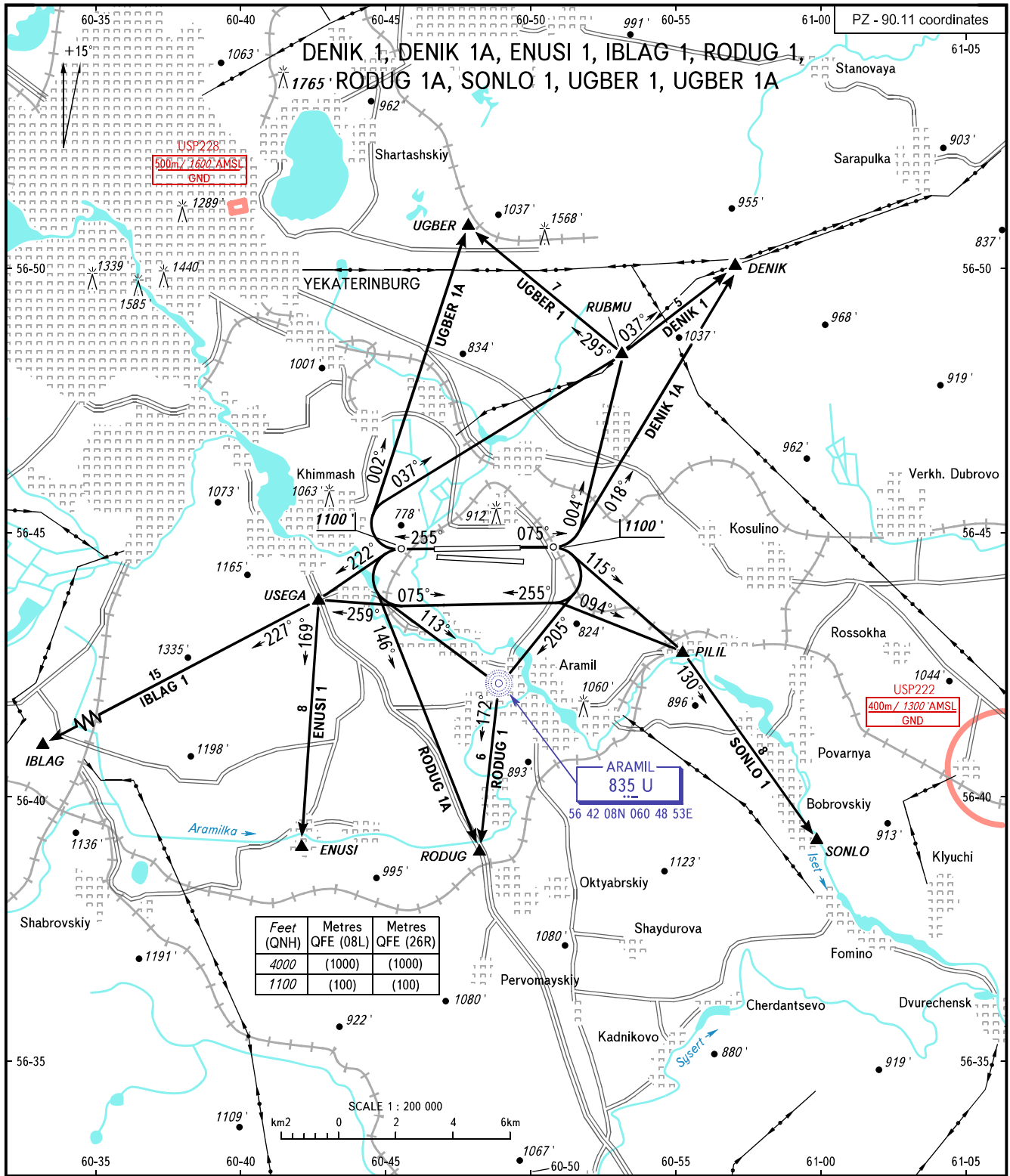


VFR  
DEPARTURE  
CHART

TRANSITION  
ALTITUDE : 4000'

YEKATERINBURG, RUSSIA  
KOLTSOVO  
RWY 08L/26R



Feet (QNH)	Metres QFE (08L)	Metres QFE (26R)
4000	(1000)	(1000)
1100	(100)	(100)

KOLTSOVO RADAR 118.700  
KOLTSOVO START 124.300

- WARNING:**
1. Departure route is assigned by ATS unit.
  2. The initial turn to CRP RUBMU, DENIK shall be executed not earlier than reaching the opposite runway extremity.
  3. Departure routes RODUG 1 and RODUG 1A are assigned when there are no flights at Yekaterinburg/Aramil AD.

BEARINGS AND TRACKS ARE MAGNETIC  
ALTITUDES AND ELEVATIONS IN FEET  
DISTANCES IN KILOMETRES

CHANGE: New chart