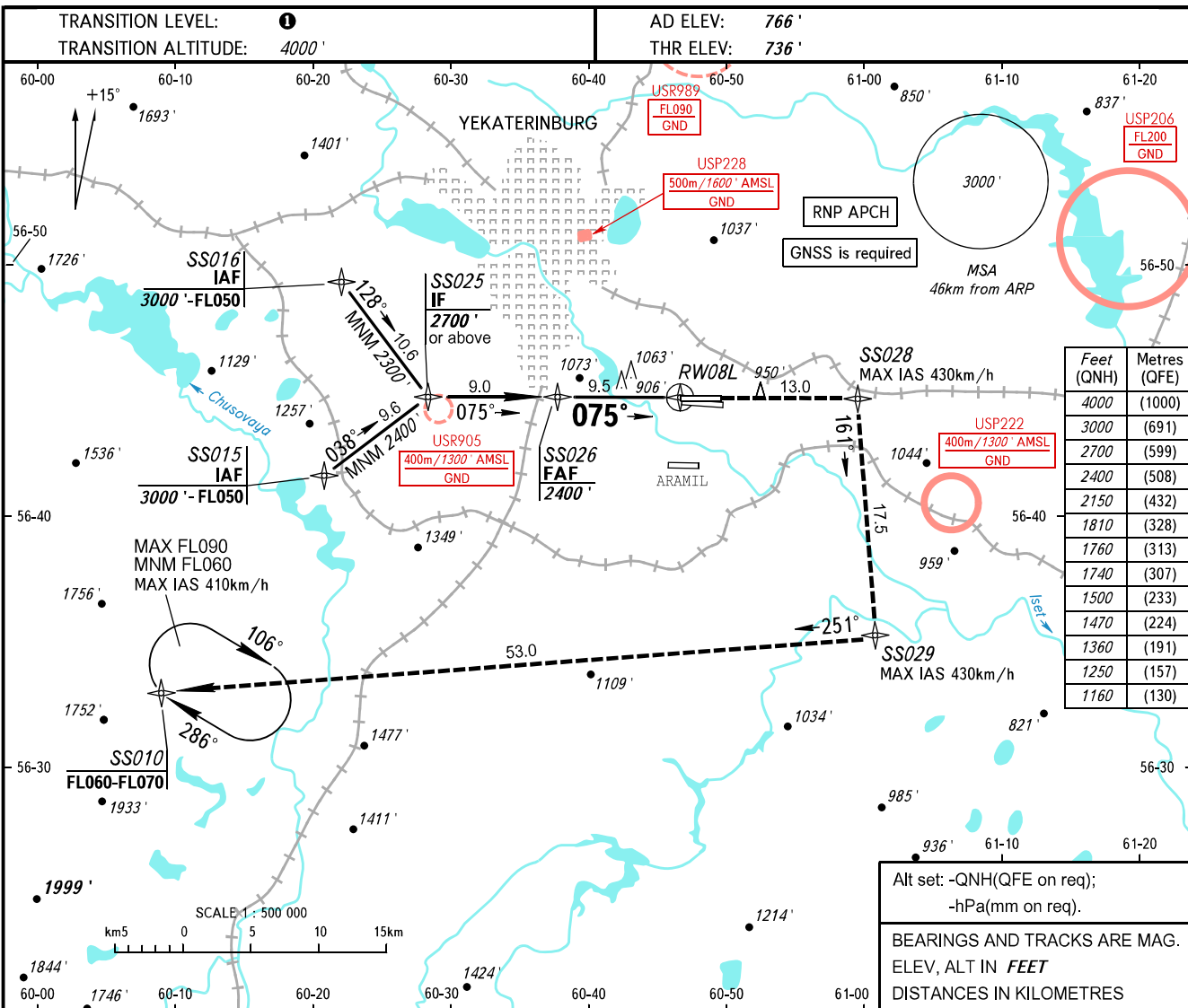


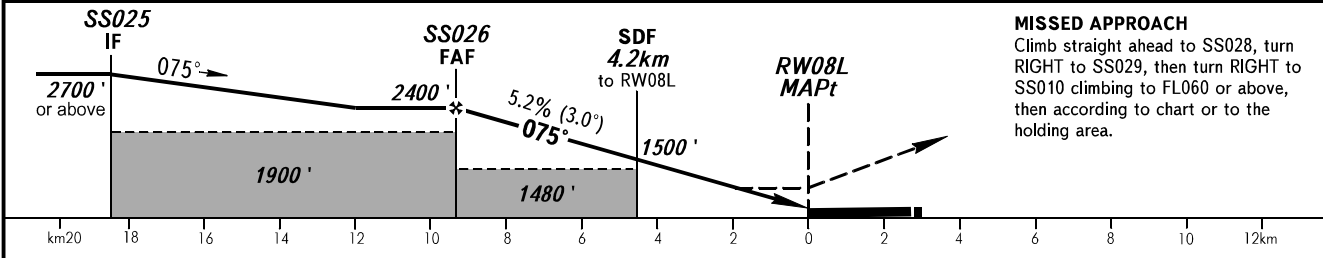
**INSTRUMENT
APPROACH
CHART - ICAO**

KOLTSOVO RADAR **118.700**
KOLTSOVO START **124.300**

YEKATERINBURG, RUSSIA
KOLTSOVO
RNP RWY 08L



DIST to MAPt	9.4	8.0	6.0	4.0
ALTITUDE	2400'	2150'	1810'	1470'



OCA(H)		A	B	C	D
Straight-in Approach	LNAV	1160' (420')	1160' (420')	1160' (420')	1160' (420')
Circling		1250' (480')	1360' (600')	1740' (970')	1760' (1000')

① TRANSITION LEVEL:
 - FL050 when QNH is 1013 hPa (760mm mercury column) or above;
 - FL060 when QNH is 977 hPa (733mm mercury column), but less than 1013 hPa (760mm mercury column);
 - FL070 when QNH is less than 977 hPa (733mm mercury column).

GROUND SPEED	km/h	150	180	210	240	270	300	330	360	390
RATE OF DESCENT	m/s	2.2	2.6	3.0	3.5	3.9	4.3	4.8	5.2	5.6
	ft/min	427	512	597	682	768	853	938	1024	1109