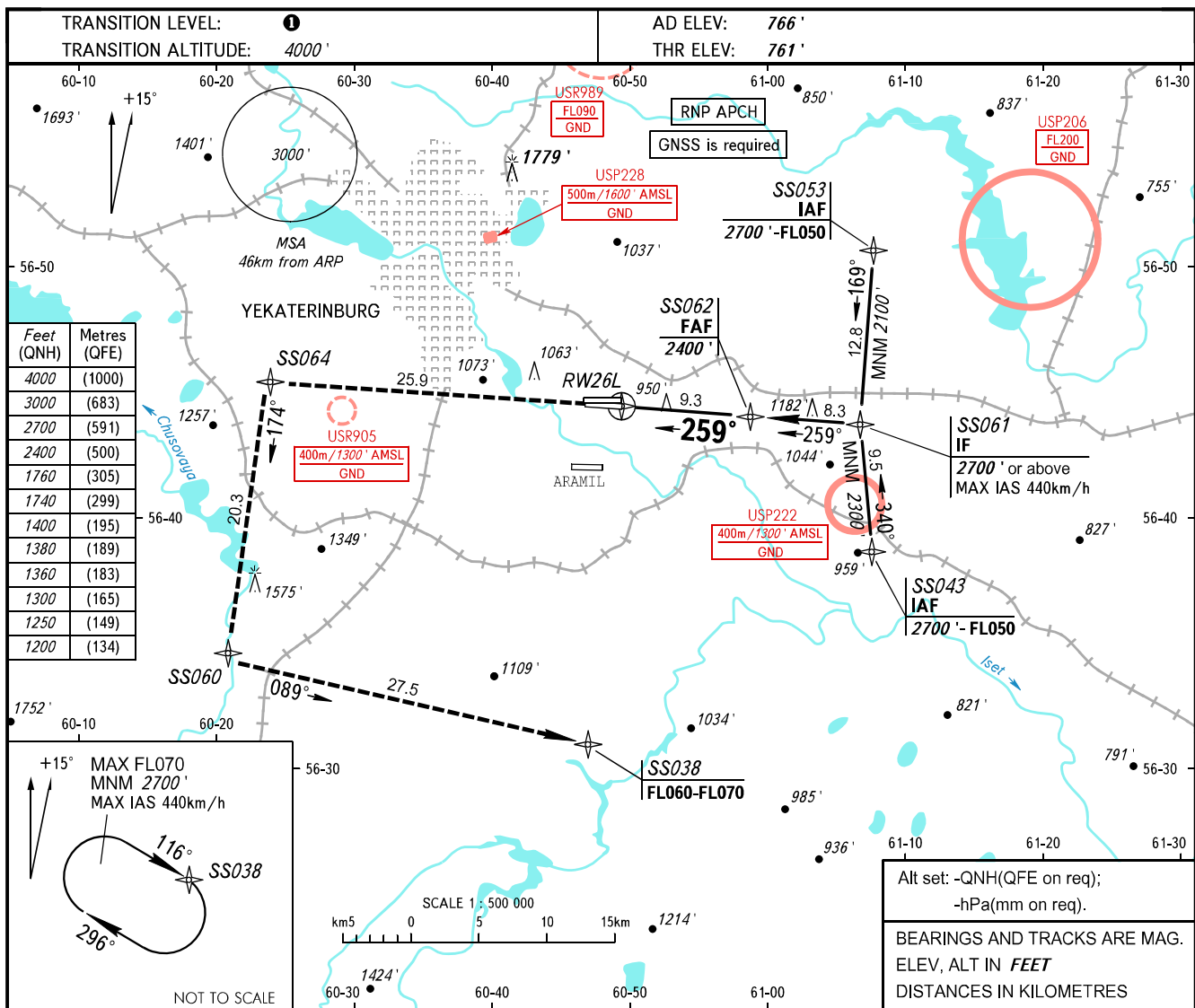


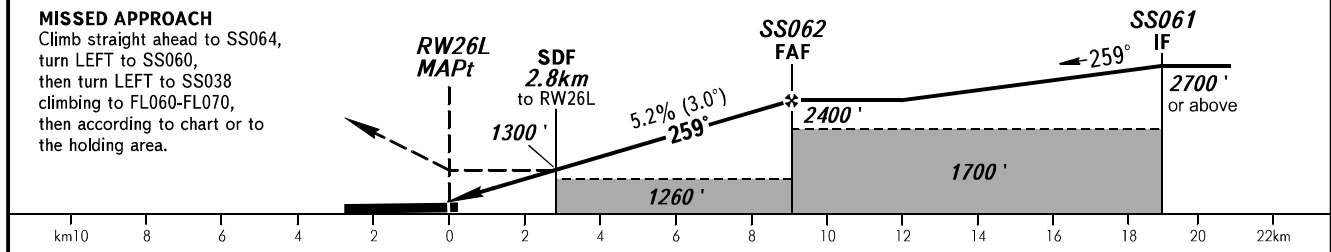
**INSTRUMENT
APPROACH
CHART - ICAO**

KOLTSOVO RADAR **118.700**
KOLTSOVO START **124.300**

YEKATERINBURG, RUSSIA
KOLTSOVO
RNP RWY 26L



DIST to MAPt	4.0	6.0	8.0	9.4
ALTITUDE	1490'	1830'	2180'	2400'



OCA(H)		A	B	C	D					
Straight-in Approach	LNAV	1200' (440')	1200' (440')	1200' (440')	1200' (440')					
Circling		1250' (480')	1360' (600')	1740' (970')	1760' (1000')					
<p>TRANSITION LEVEL:</p> <ul style="list-style-type: none"> - FL050 when QNH is 1013 hPa (760mm mercury column) or above; - FL060 when QNH is 977 hPa (733mm mercury column) or above, but less than 1013 hPa (760mm mercury column); - FL070 when QNH is less than 977 hPa (733mm mercury column). 										
GROUND SPEED	km/h	150	180	210	240	270	300	330	360	390
RATE OF DESCENT	m/s	2.2	2.6	3.0	3.5	3.9	4.3	4.8	5.2	5.6
	ft/min	427	512	597	682	768	853	938	1024	1109