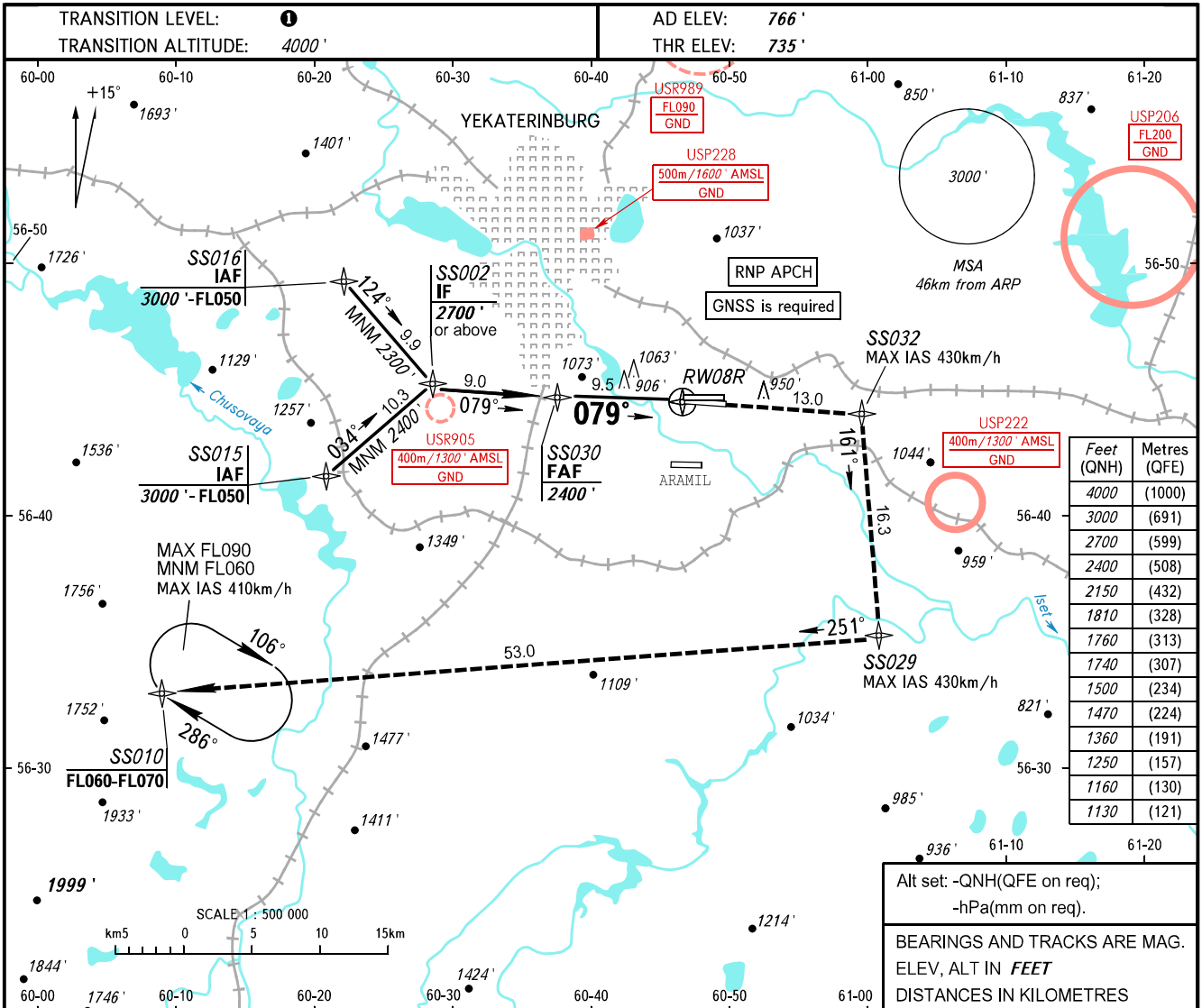


**INSTRUMENT
APPROACH
CHART - ICAO**

KOLTSOVO RADAR **118.700**
KOLTSOVO START **124.300**

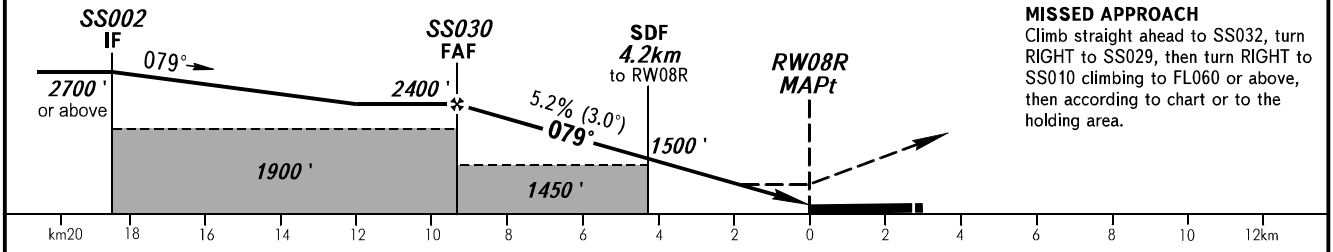
YEKATERINBURG, RUSSIA
KOLTSOVO
RNP RWY 08R



Feet (QNH)	Metres (QFE)
4000	(1000)
3000	(691)
2700	(599)
2400	(508)
2150	(432)
1810	(328)
1760	(313)
1740	(307)
1500	(234)
1470	(224)
1360	(191)
1250	(157)
1160	(130)
1130	(121)

Alt set: -QNH(QFE on req);
-hPa(mm on req).
BEARINGS AND TRACKS ARE MAG.
ELEV, ALT IN FEET
DISTANCES IN KILOMETRES

DIST to MAPt	9.4	8.0	6.0	4.0
ALTITUDE	2400'	2150'	1810'	1470'



OCA(H)		A	B	C	D
Straight-in Approach	LNAV	1160' (420')	1160' (420')	1160' (420')	1160' (420')
Circling		1250' (480')	1360' (600')	1740' (710')	1760' (1000')

1 TRANSITION LEVEL:
- FL050 when QNH is 1013 hPa (760mm mercury column) or above;
- FL060 when QNH is 977 hPa (733mm mercury column) or above, but less than 1013 hPa (760mm mercury column);
- FL070 when QNH is less than 977 hPa (733mm mercury column).

GROUND SPEED	km/h	150	180	210	240	270	300	330	360	390
	RATE OF DESCENT	m/s	2.2	2.6	3.0	3.5	3.9	4.3	4.8	5.2
	ft/min	427	512	597	682	768	853	938	1024	1109