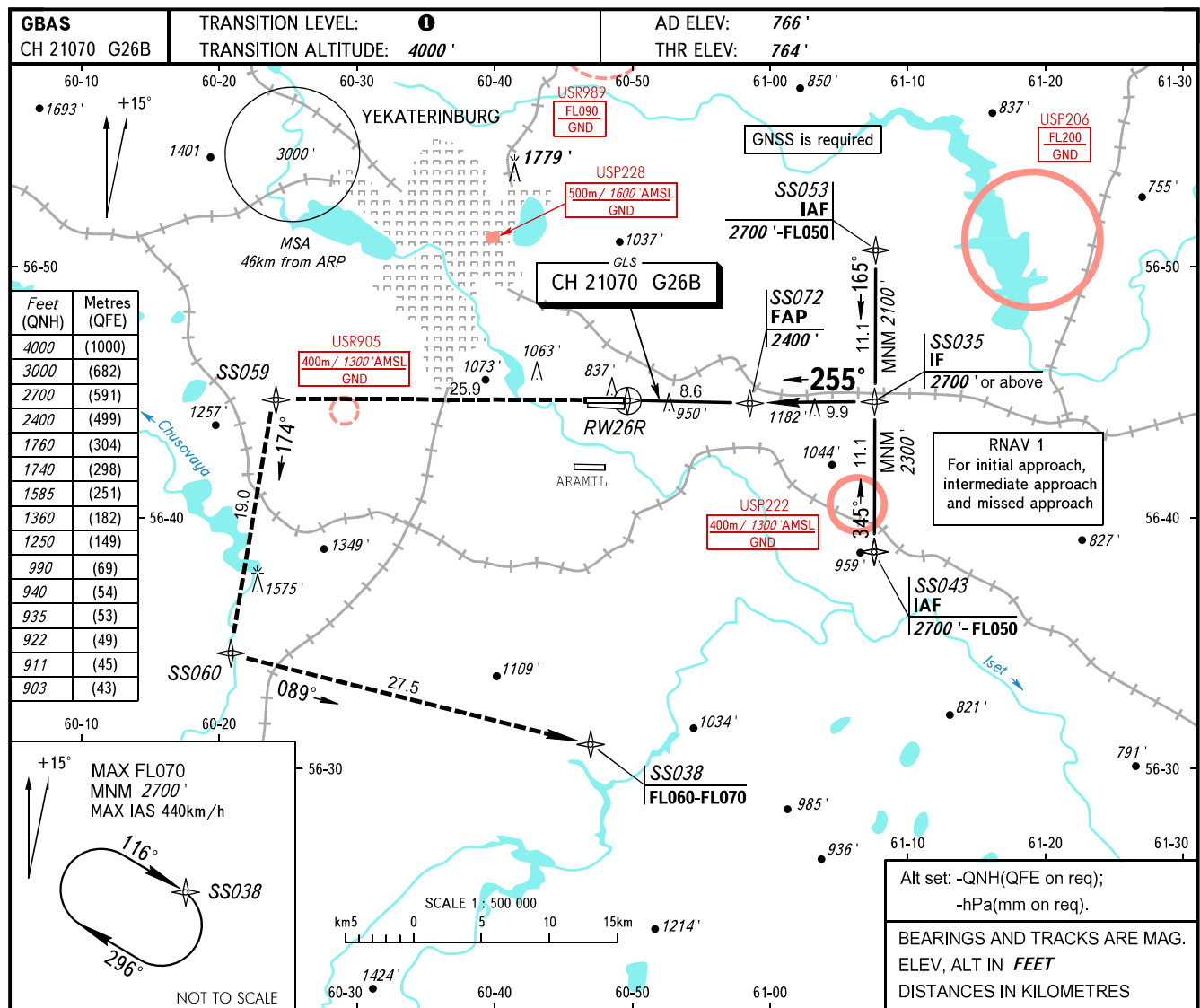


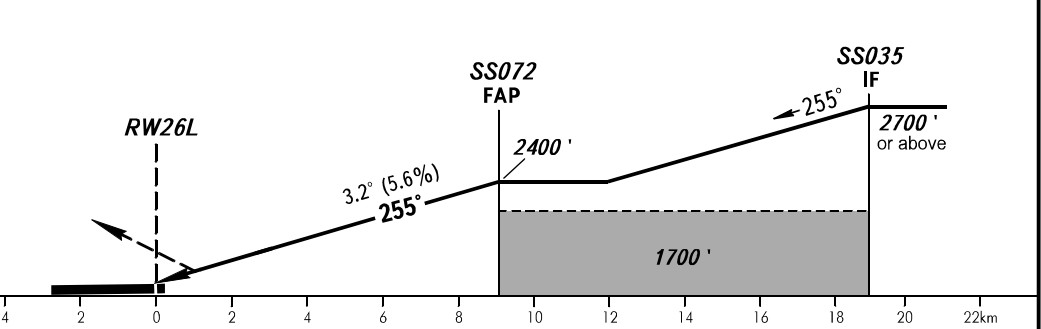
**INSTRUMENT
APPROACH
CHART - ICAO**

KOLTSOVO RADAR **118.700**
KOLTSOVO START **124.300**

YEKATERINBURG, RUSSIA
KOLTSOVO
GLS RWY 26R



MISSED APPROACH
Climb straight ahead to SS059, turn LEFT to SS060, then turn LEFT to SS038 climbing to FL060-FL070, then according to chart or to the holding area.



OCA(H)		A	B	C	D					
Straight-in Approach	CAT I	903' (139')	911' (147')	922' (158')	935' (171')					
Circling		1250' (480')	1360' (600')	1740' (970')	1760' (1000')					
GROUND SPEED	km/h	150	180	210	240	270	300	330	360	390
RATE OF DESCENT	m/s	2.3	2.8	3.3	3.7	4.2	4.7	5.1	5.6	6.1
	ft/min	459	551	643	735	827	919	1010	1102	1194

TRANSITION LEVEL:
 - FL050 when QNH is 1013 hPa (760mm mercury column) or above;
 - FL060 when QNH is 977 hPa (733mm mercury column) or above, but less than 1013 hPa (760mm mercury column);
 - FL070 when QNH is less than 977 hPa (733mm mercury column).