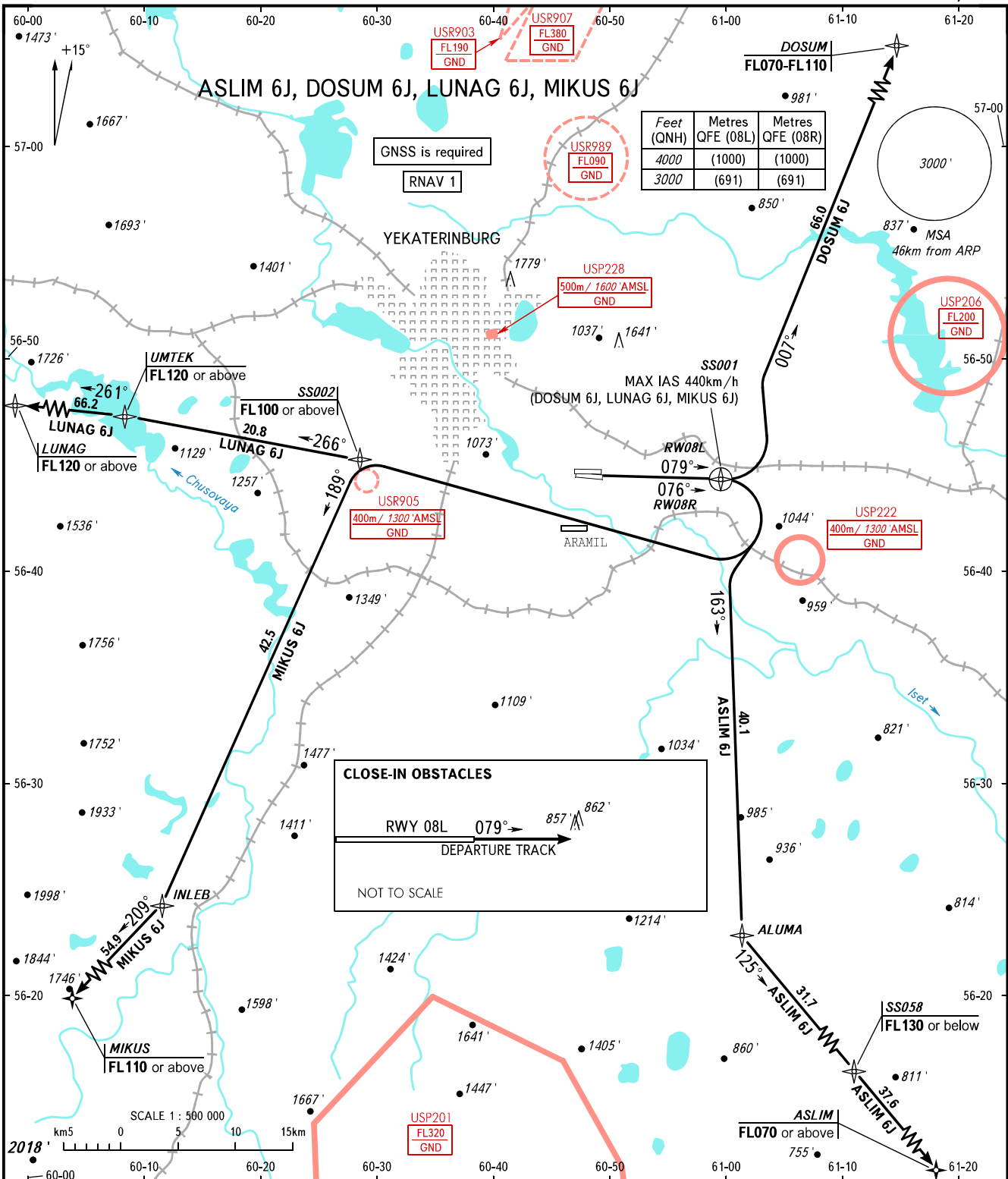


STANDARD DEPARTURE CHART
INSTRUMENT (SID) - ICAO

YEKATERINBURG, RUSSIA
KOLTSOVO
RNAV RWY 08R, 08L

TRANSITION
ALTITUDE : 4000'



CLOSE-IN OBSTACLES

RWY 08L 079° → 857' 862'

DEPARTURE TRACK

NOT TO SCALE

KOLTSOVO START 124.300
KOLTSOVO RADAR 118.700
KOLTSOVO APPROACH 125.900

WARNING:

1. The minimum climb gradients are as follows (required due to the airspace structure):
- 5.0% up to FL100 for LUNAG 6J, MIKUS 6J.
2. There are close-in obstacles.

BEARINGS AND TRACKS ARE MAGNETIC
ALTITUDES AND ELEVATIONS IN FEET
DISTANCES IN KILOMETRES