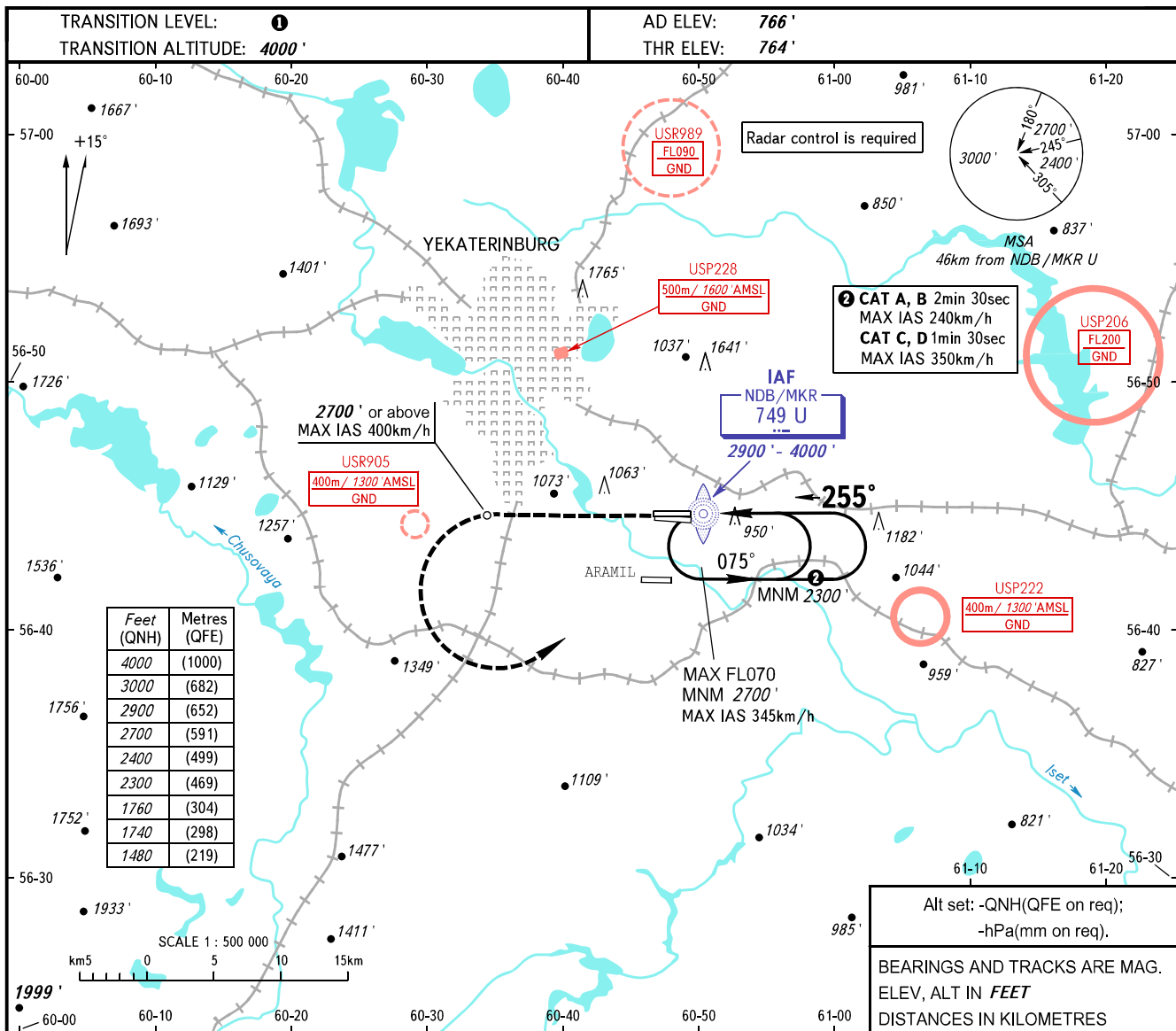


**INSTRUMENT
APPROACH
CHART - ICAO**

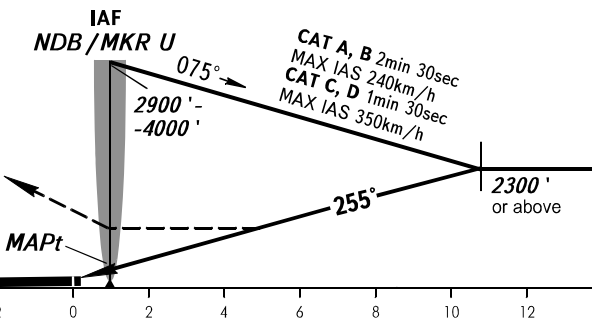
KOLTSOVO RADAR 118.700
KOLTSOVO START 124.300

**YEKATERINBURG, RUSSIA
KOLTSOVO
NDB Y RWY 26R**



MISSED APPROACH

Climb straight ahead to 2700' or above, turn LEFT to NDB/MKR U climbing to 2900' or above, then according to chart or to the holding area.



OCA(H)	A	B	C	D
Straight-in Approach	1480' (720')	1480' (720')	1480' (720')	1480' (720')
Circling	1480' (720')	1480' (720')	1740' (970')	1760' (1000')

1 TRANSITION LEVEL:
- FL050 when QNH is 1013 hPa (760mm mercury column) or above;
- FL060 when QNH is 977 hPa (733mm mercury column) or above, but less than 1013 hPa (760mm mercury column);
- FL070 when QNH is less than 977 hPa (733mm mercury column).
NOTE:
1. Turn before MAPt is prohibited.
2. Timing not authorized for defining MAPt.