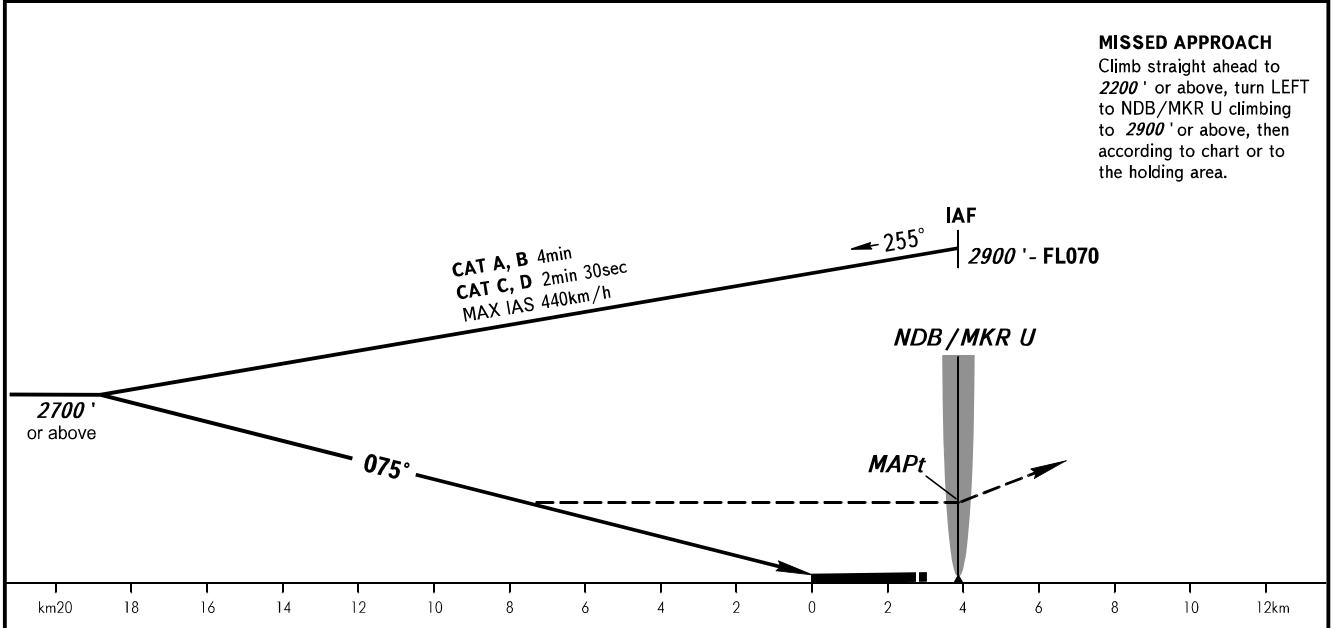
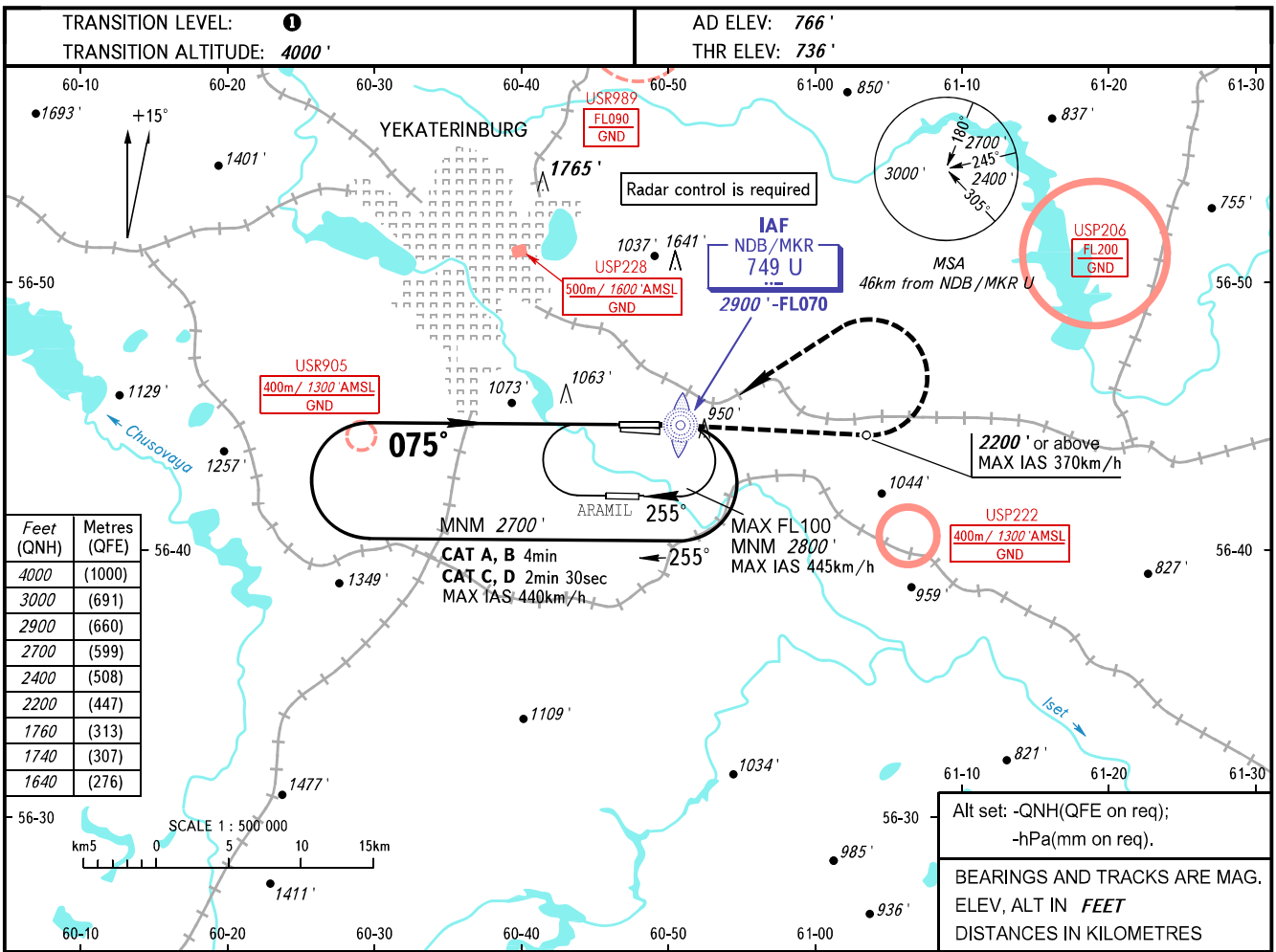


**INSTRUMENT  
APPROACH  
CHART - ICAO**

KOLTSOVO RADAR **118.700**  
KOLTSOVO START **124.300**

**YEKATERINBURG, RUSSIA**  
KOLTSOVO  
NDB Y RWY 08L



OCA(H)	A	B	C	D
Straight-in Approach	1640' (910')	1640' (910')	1640' (910')	1640' (910')
Circling	1640' (910')	1640' (910')	1740' (970')	1760' (1000')

**TRANSITION LEVEL:**  
- FL050 when QNH is 1013 hPa (760mm mercury column) or above;  
- FL060 when QNH is 977 hPa (733mm mercury column) or above, but less than 1013 hPa (760mm mercury column);  
- FL070 when QNH is less than 977 hPa (733mm mercury column).

**NOTE:**  
1. Turn before MAPt is prohibited.  
2. Timing not authorized for defining MAPt.

CHANGE: New chart