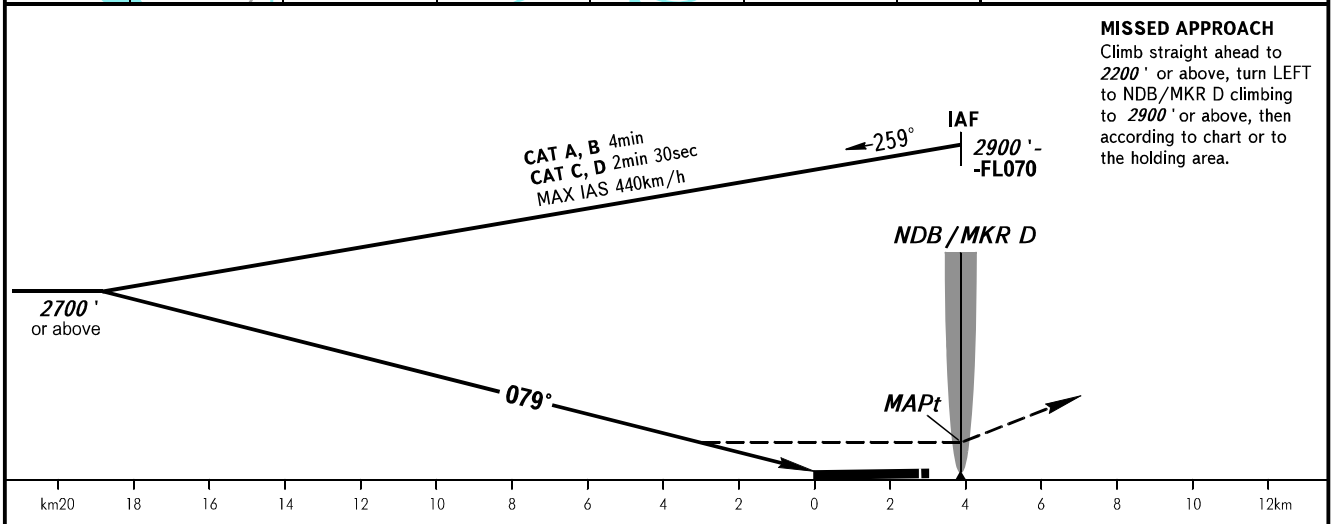
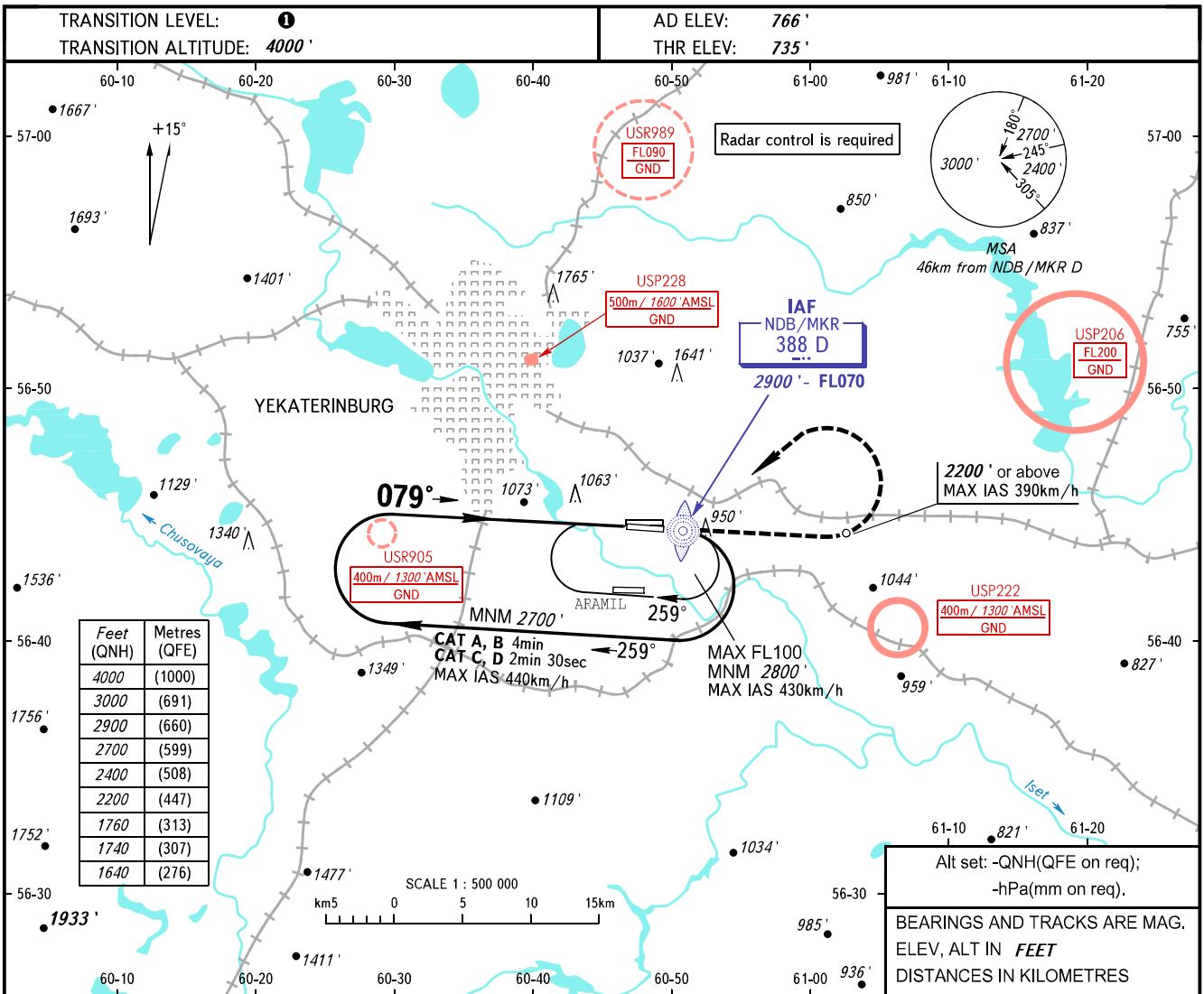


**INSTRUMENT
APPROACH
CHART - ICAO**

| | |
|----------------|---------|
| KOLTSOVO RADAR | 118.700 |
| KOLTSOVO START | 124.300 |

YEKATERINBURG, RUSSIA
KOLTSOVO
NDB Y RWY 08R



| OCA(H) | A | B | C | D |
|----------------------|--------------|--------------|--------------|---------------|
| Straight-in Approach | 1640' (900') | 1640' (900') | 1640' (900') | 1640' (900') |
| Circling | 1640' (900') | 1640' (900') | 1740' (970') | 1760' (1000') |

1 TRANSITION LEVEL:
- FL050 when QNH is 1013 hPa (760mm mercury column) or above;
- FL060 when QNH is 977 hPa (733mm mercury column) or above, but less than 1013 hPa (760mm mercury column);
- FL070 when QNH is less than 977 hPa (733mm mercury column).

NOTE:
1. Turn before MAPt is prohibited.
2. Timing not authorized for defining MAPt.