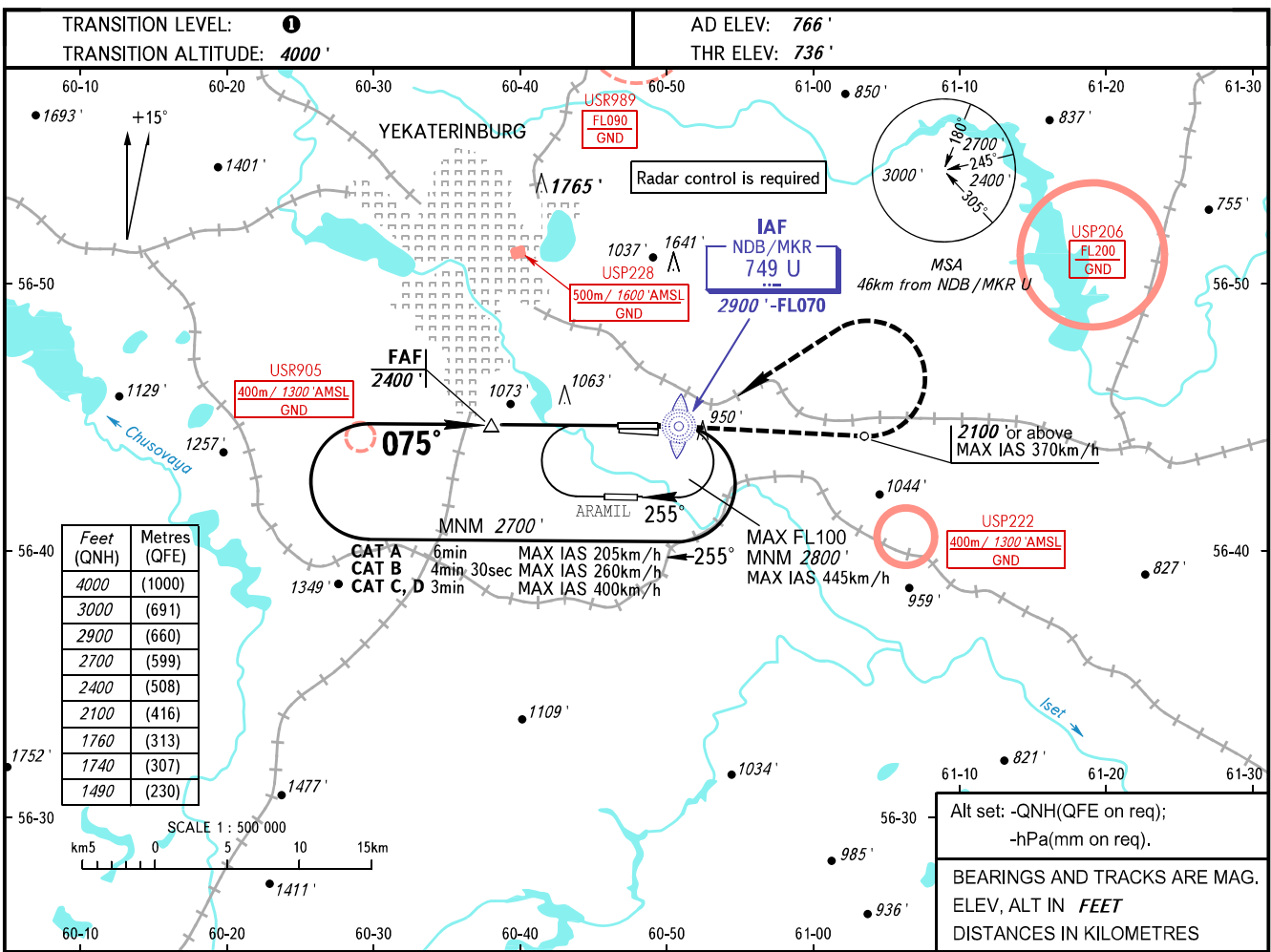


**INSTRUMENT
APPROACH
CHART - ICAO**

KOLTSOVO RADAR **118.700**
KOLTSOVO START **124.300**

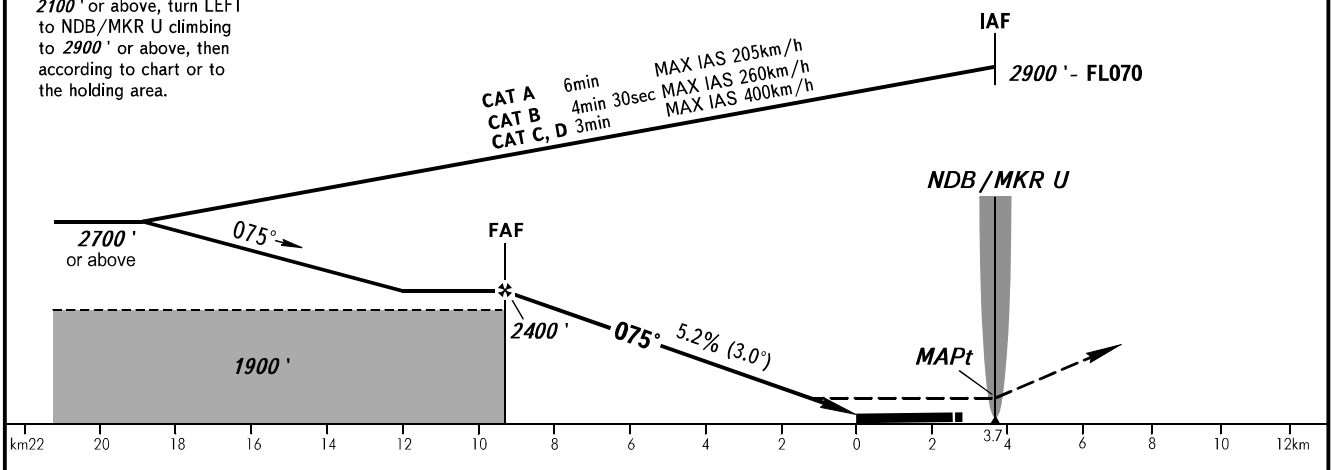
YEKATERINBURG, RUSSIA
KOLTSOVO
NDB Z RWY 08L



MISSED APPROACH

Climb straight ahead to 2100' or above, turn LEFT to NDB/MKR U climbing to 2900' or above, then according to chart or to the holding area.

FAf is fixed by TAR DIST is 11.0.



| OCA(H) | A | B | C | D | ① TRANSITION LEVEL: | | | | | |
|----------------------|--------------|--------------|--------------|---------------|---|-----|-----|-----|------|------|
| Straight-in Approach | 1490' (760') | 1490' (760') | 1490' (760') | 1490' (760') | - FL050 when QNH is 1013 hPa (760mm mercury column) or above; | | | | | |
| | | | | | - FL060 when QNH is 977 hPa (733mm mercury column) or above, but less than 1013 hPa (760mm mercury column); | | | | | |
| Circling | 1490' (760') | 1490' (760') | 1740' (970') | 1760' (1000') | - FL070 when QNH is less than 977 hPa (733mm mercury column). | | | | | |
| | | | | | NOTE: | | | | | |
| GROUND SPEED | km/h | 150 | 180 | 210 | 240 | 270 | 300 | 330 | 360 | 390 |
| RATE OF DESCENT | m/s | 2.2 | 2.6 | 3.0 | 3.5 | 3.9 | 4.3 | 4.8 | 5.2 | 5.6 |
| | ft/min | 427 | 512 | 597 | 682 | 768 | 853 | 938 | 1024 | 1109 |

NOTE:
1. Turn before MAPt is prohibited.
2. Timing not authorized for defining MAPt.

CHANGE: New chart