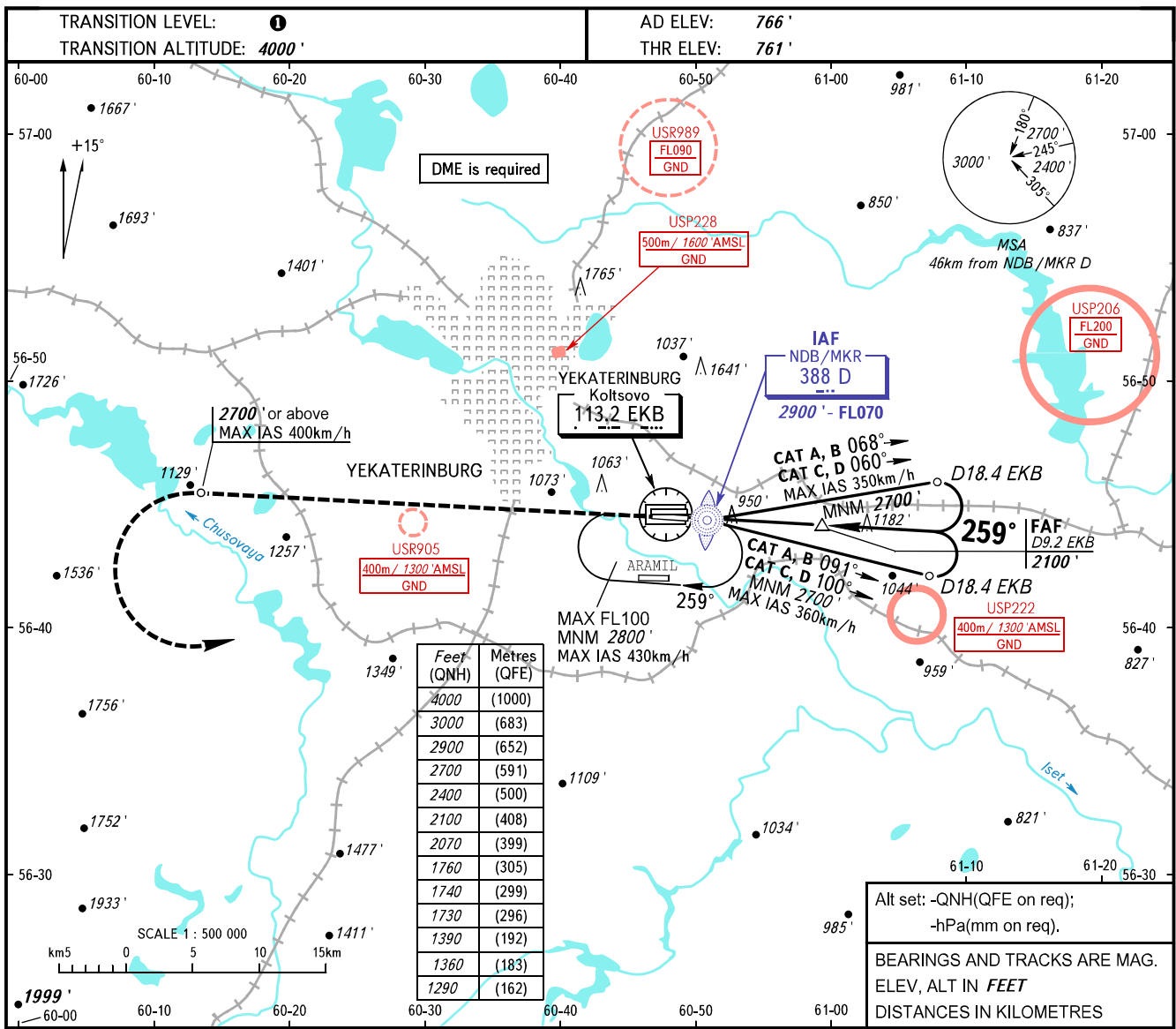


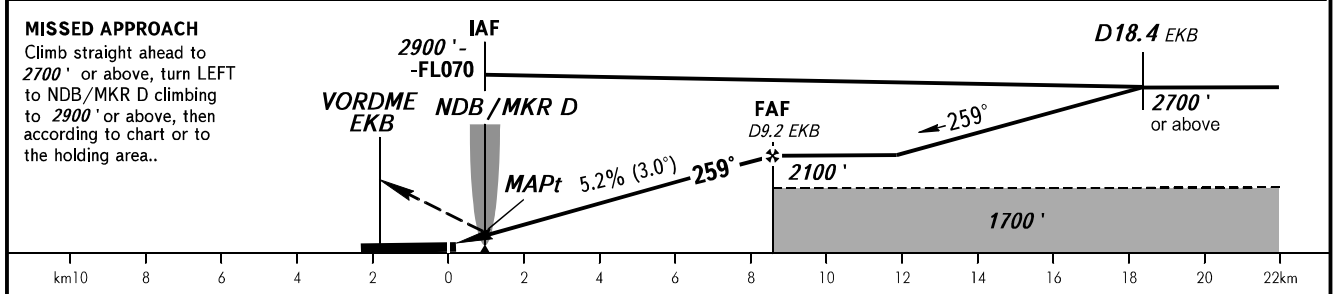
**INSTRUMENT
APPROACH
CHART - ICAO**

KOLTSOVO RADAR	118.700
KOLTSOVO START	124.300

YEKATERINBURG, RUSSIA
KOLTSOVO
NDB Z RWY 26L



DME EKB	5.0	7.0	9.0	9.2
ALTITUDE	1390'	1730'	2070'	2100'



OCA(H)		A	B	C	D	① TRANSITION LEVEL: - FL050 when QNH is 1013 hPa (760mm mercury column) or above; - FL060 when QNH is 977 hPa (733mm mercury column) or above, but less than 1013 hPa (760mm mercury column); - FL070 when QNH is less than 977 hPa (733mm mercury column).				
Straight-in Approach		1290' (530')	1290' (530')	1290' (530')	1290' (530')		NOTE: 1. Turn before MAPt is prohibited. 2. Timing not authorized for defining MAPt.			
	Circling	1290' (530')	1360' (600')	1740' (970')	1760' (1000')					
GROUND SPEED	km/h	150	180	210	240	270	300	330	360	390
RATE OF DESCENT	m/s	2.2	2.6	3.0	3.5	3.9	4.3	4.8	5.2	5.6
	ft/min	427	512	597	682	768	853	938	1024	1109