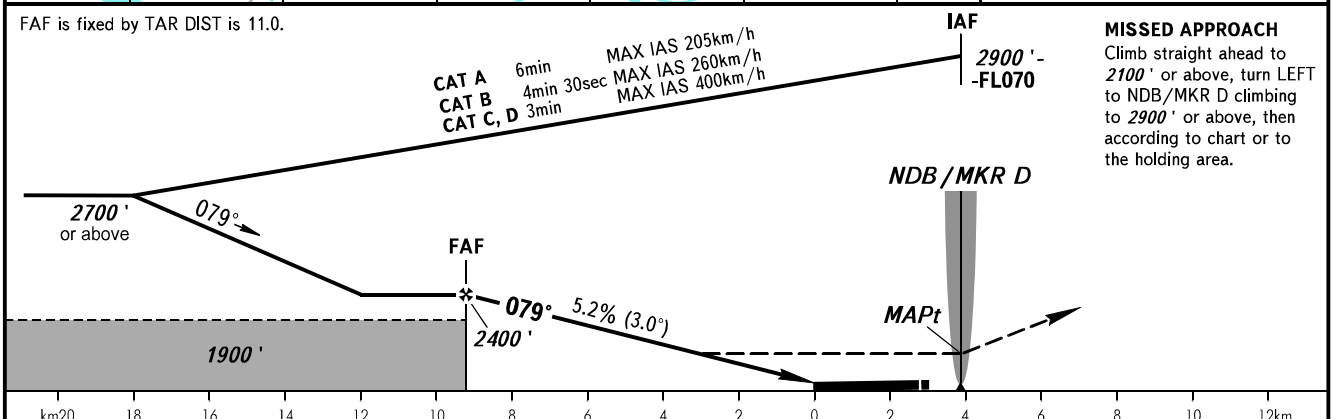
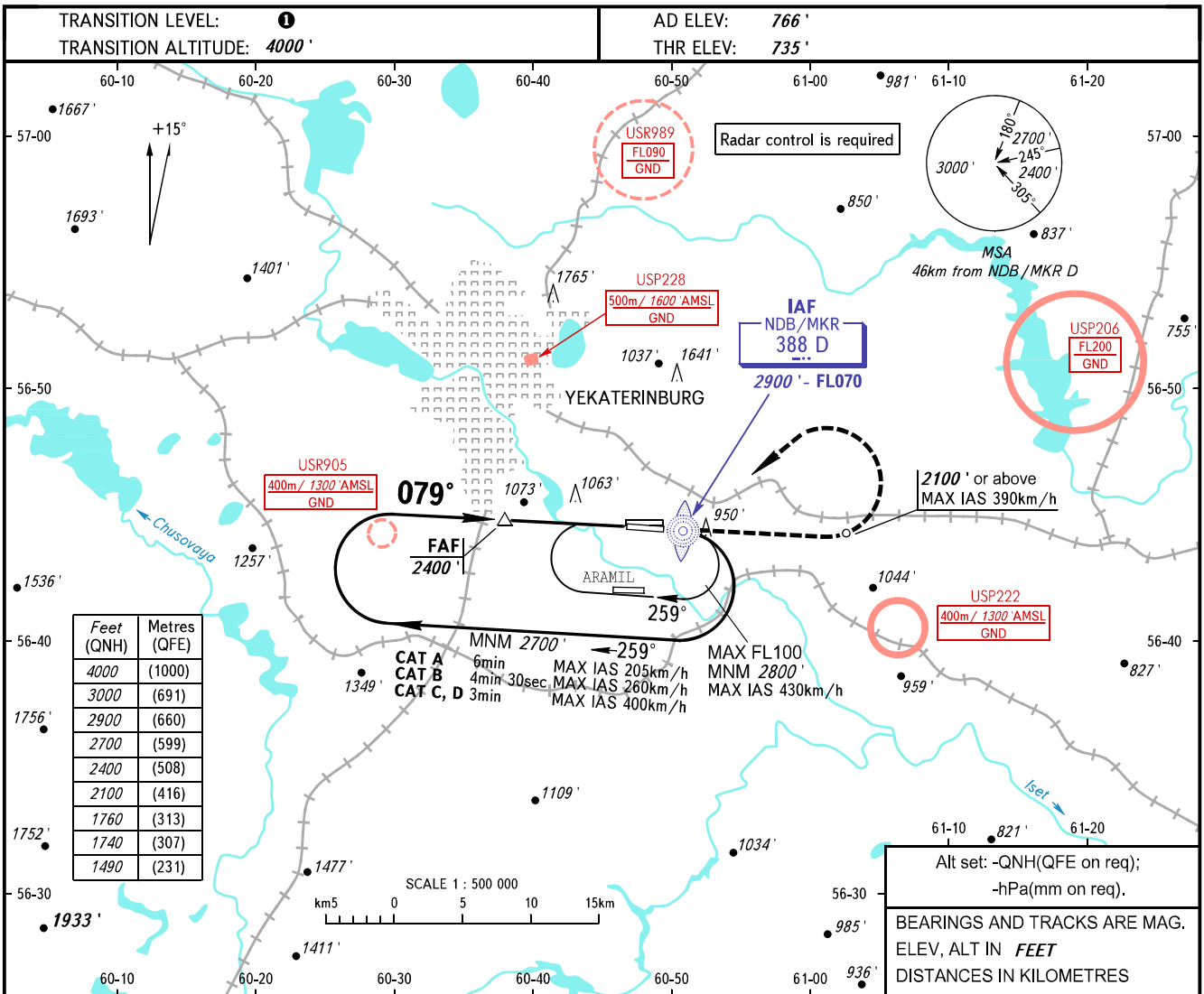


**INSTRUMENT
APPROACH
CHART - ICAO**

KOLTSOVO RADAR **118.700**
KOLTSOVO START **124.300**

YEKATERINBURG, RUSSIA
KOLTSOVO
NDB Z RWY 08R



OCA(H)		A	B	C	D	① TRANSITION LEVEL:						
Straight-in Approach		1490' (760')	1490' (760')	1490' (760')	1490' (760')	- FL050 when QNH is 1013 hPa (760mm mercury column) or above;						
						- FL060 when QNH is 977 hPa (733mm mercury column) or above, but less than 1013 hPa (760mm mercury column);						
Circling		1490' (760')	1490' (760')	1740' (970')	1760' (1000')	- FL070 when QNH is less than 977 hPa (733mm mercury column).						
GROUND SPEED		km/h		150	180	210	240	270	300	330	360	390
RATE OF DESCENT		m/s		2.2	2.6	3.0	3.5	3.9	4.3	4.8	5.2	5.6
		ft/min		427	512	597	682	768	853	938	1024	1109

NOTE:
1. Turn before MAPt is prohibited.
2. Timing not authorized for defining MAPt.