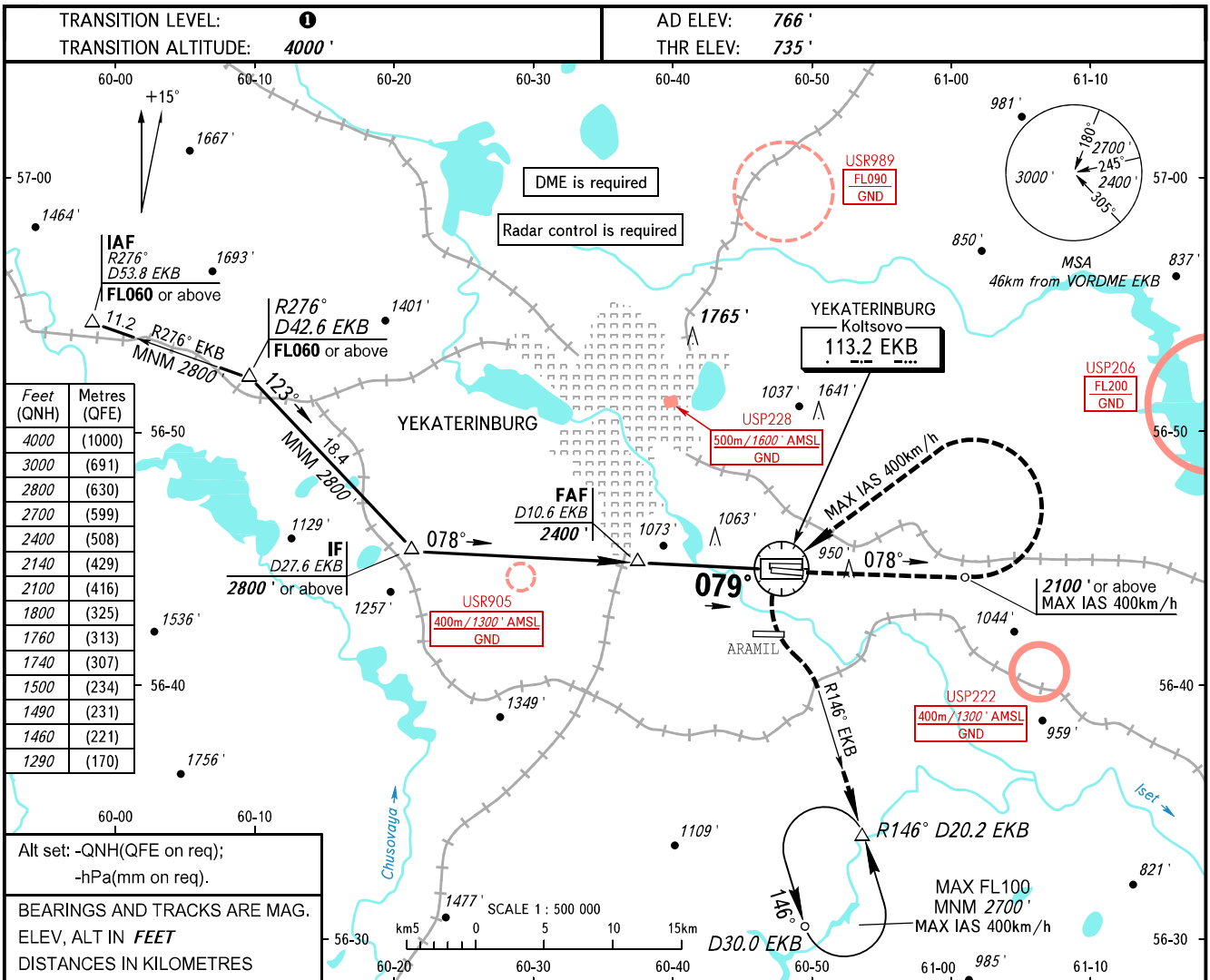


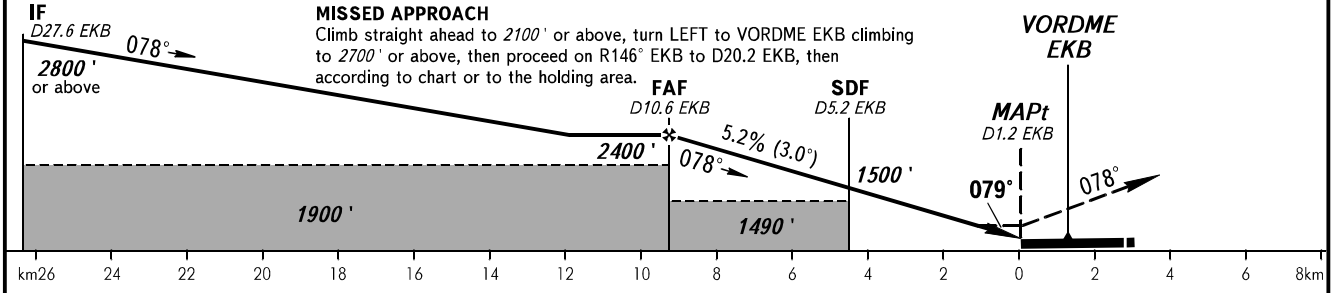
**INSTRUMENT
APPROACH
CHART - ICAO**

KOLTSOVO RADAR **118.700**
KOLTSOVO START **124.300**

YEKATERINBURG, RUSSIA
KOLTSOVO
VOR Y RWY 08R



DME EKB	10.6	9.0	7.0	5.0
ALTITUDE	2400'	2140'	1800'	1460'



OCA(H)		A	B	C	D	① TRANSITION LEVEL:					
Straight-in Approach	With SDF	1290' (550')	1290' (550')	1290' (550')	1290' (550')	- FL050 when QNH is 1013 hPa (760mm mercury column) or above;					
	WO SDF	1490' (760')	1490' (760')	1490' (760')	1490' (760')	- FL060 when QNH is 977 hPa (733mm mercury column) or above, but less than 1013 hPa (760mm mercury column);					
Circling		1490' (760')	1490' (760')	1740' (970')	1760' (1000')	- FL070 when QNH is less than 977 hPa (733mm mercury column).					
GROUND SPEED		km/h	150	180	210	240	270	300	330	360	390
RATE OF DESCENT		m/s	2.2	2.6	3.0	3.5	3.9	4.3	4.8	5.2	5.6
		ft/min	427	512	597	682	768	853	938	1024	1109

WARNING:
1. Final approach track is offset by 1° from the RWY centre line.
2. Turn before MAPt is prohibited.
3. Timing not authorized for defining MAPt.

CHANGE: New chart