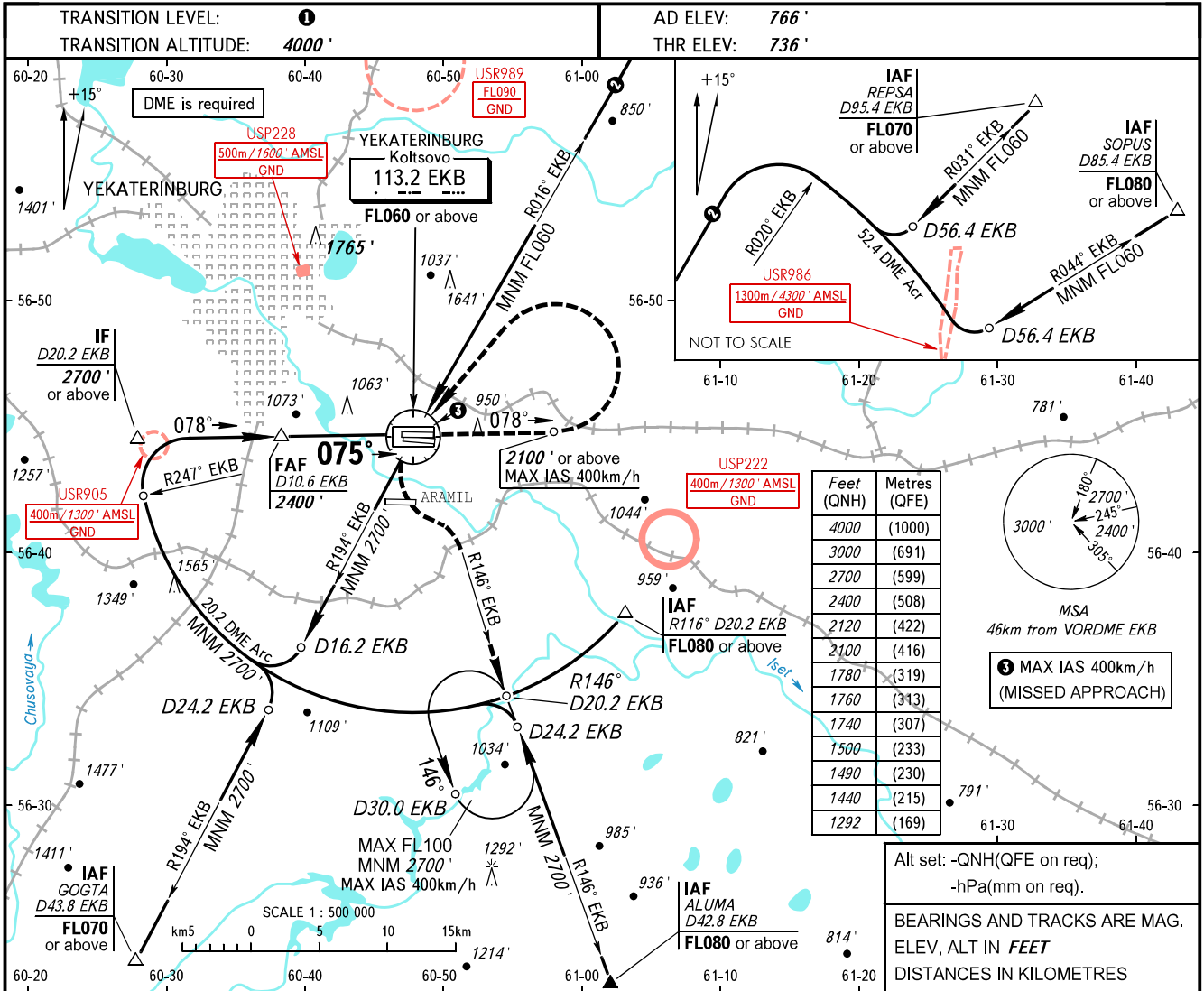


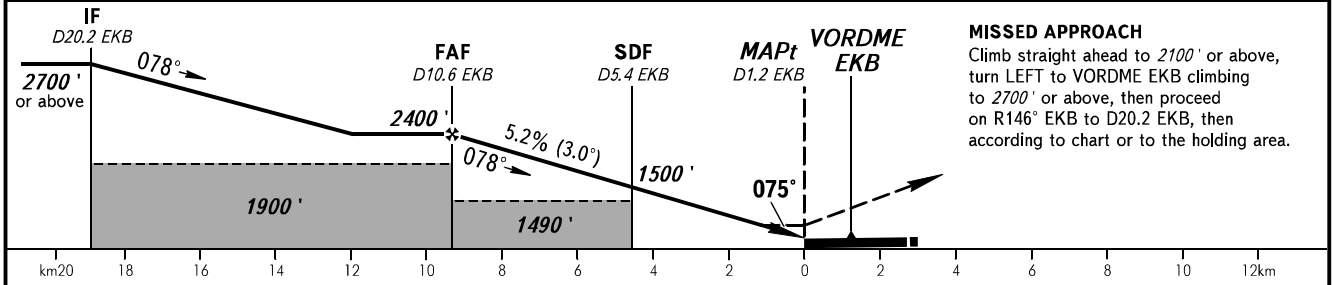
**INSTRUMENT
APPROACH
CHART - ICAO**

KOLTSOVO RADAR **118.700**
KOLTSOVO START **124.300**

YEKATERINBURG, RUSSIA
KOLTSOVO
VOR Z RWY 08L



DME EKB	10.6	9.0	7.0	5.0
ALTITUDE	2400'	2120'	1780'	1440'



OCA(H)		A	B	C	D
Straight-in Approach	With SDF	1290' (550')	1290' (550')	1290' (550')	1290' (550')
	WO SDF	1490' (760')	1490' (760')	1490' (760')	1490' (760')
Circling		1490' (760')	1490' (760')	1740' (970')	1760' (1000')

- 1 TRANSITION LEVEL:**
- FL050 when QNH is 1013 hPa (760mm mercury column) or above;
- FL060 when QNH is 977 hPa (733mm mercury column) or above, but less than 1013 hPa (760mm mercury column);
- FL070 when QNH is less than 977 hPa (733mm mercury column).
- WARNING:**
1. Final approach track is offset by 3° from the RWY centre line.
2. Turn before MAPt is prohibited.
3. Timing not authorized for defining MAPt.

GROUND SPEED	km/h		150	180	210	240	270	300	330	360	390
	m/s		2.2	2.6	3.0	3.5	3.9	4.3	4.8	5.2	5.6
RATE OF DESCENT	ft/min		427	512	597	682	768	853	938	1024	1109

CHANGE: New chart