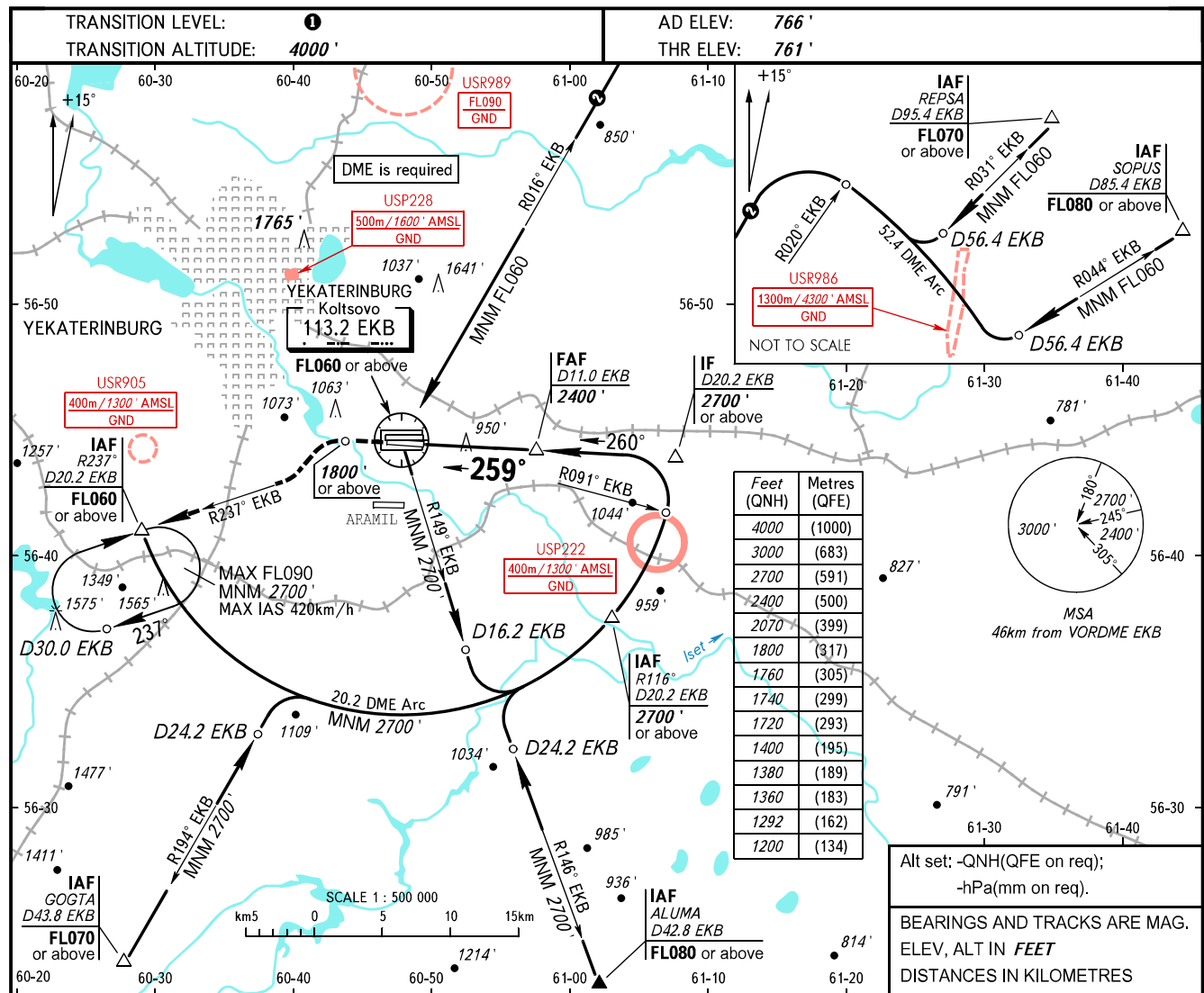


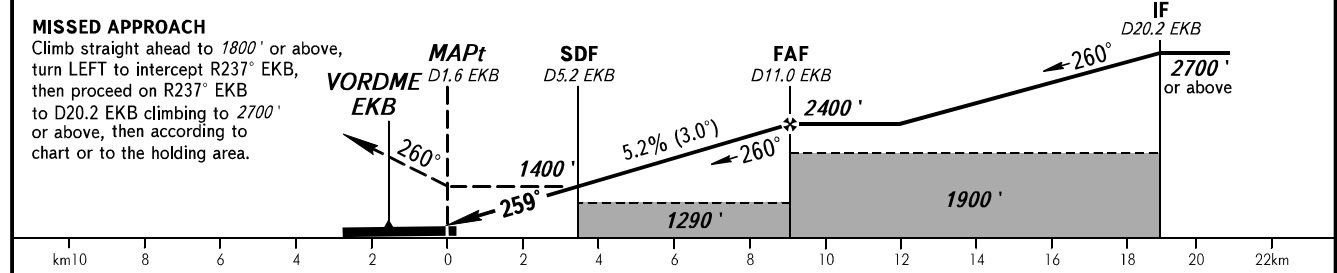
**INSTRUMENT
APPROACH
CHART - ICAO**

KOLTSOVO RADAR **118.700**
KOLTSOVO START **124.300**

YEKATERINBURG, RUSSIA
KOLTSOVO
VOR Z RWY 26L



DME EKB	5.0	7.0	9.0	11.0
ALTITUDE	1380'	1720'	2070'	2400'



OCA(H)		A	B	C	D	TRANSITION LEVEL:					
Straight-in Approach	With SDF	1200' (440')	1200' (440')	1200' (440')	1200' (440')	- FL050 when QNH is 1013 hPa (760mm mercury column) or above;					
	WO SDF	1290' (530')	1290' (530')	1290' (530')	1290' (530')	- FL060 when QNH is 977 hPa (733mm mercury column) or above, but less than 1013 hPa (760mm mercury column);					
Circling		1290' (530')	1360' (600')	1740' (970')	1760' (1000')	- FL070 when QNH is less than 977 hPa (733mm mercury column).					
GROUND SPEED		km/h	150	180	210	240	270	300	330	360	390
RATE OF DESCENT		m/s	2.2	2.6	3.0	3.5	3.9	4.3	4.8	5.2	5.6
		ft/min	427	512	597	682	768	853	938	1024	1109

WARNING:
1. Final approach track is offset by 1° from the RWY centre line.
2. Turn before MAPt is prohibited.
3. Timing not authorized for defining MAPt.

CHANGE: New chart