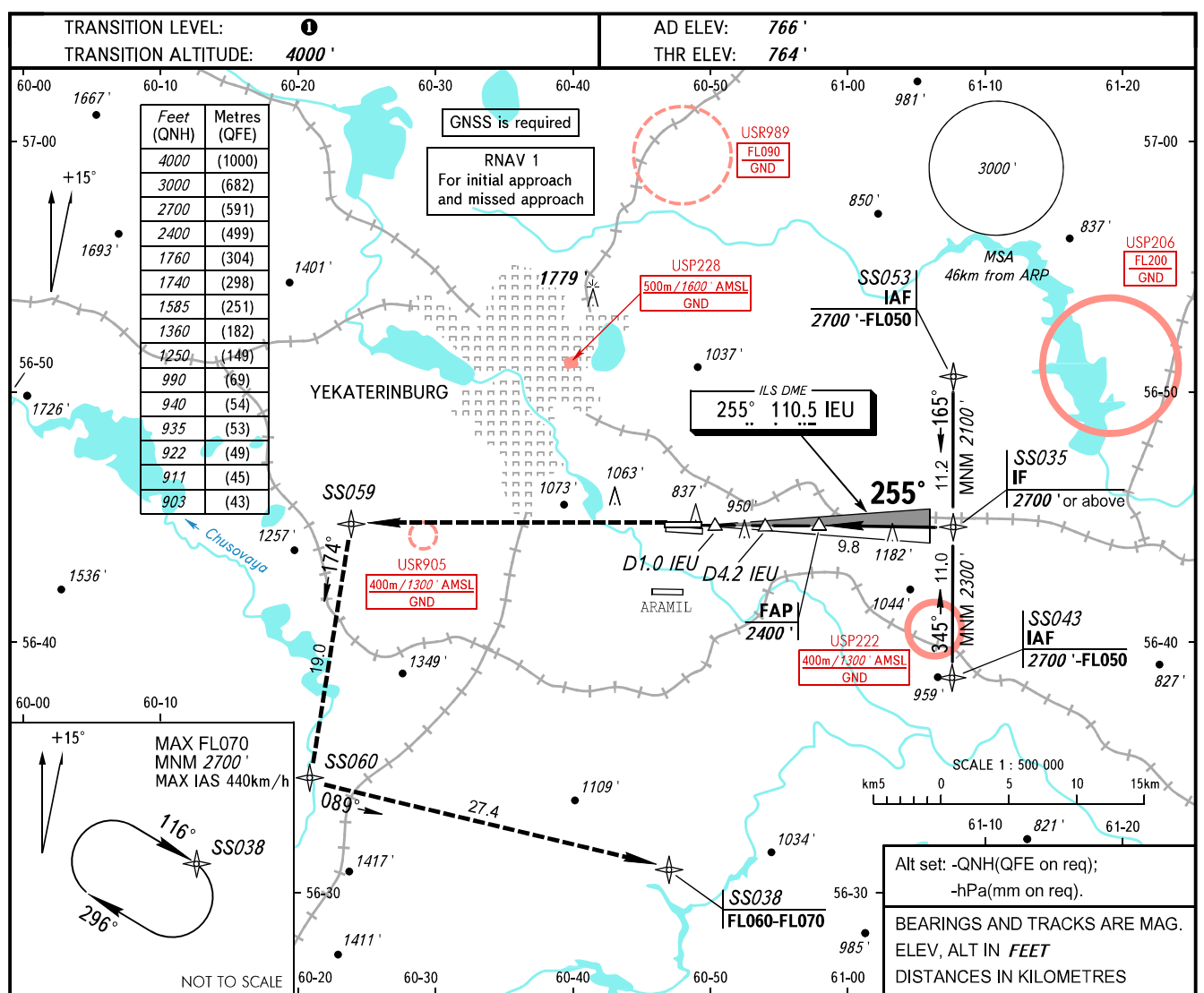


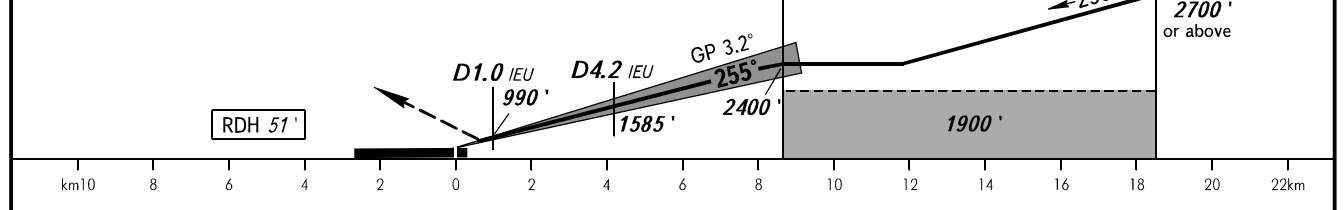
**INSTRUMENT  
APPROACH  
CHART - ICAO**

KOLTSOVO RADAR **118.700**  
KOLTSOVO START **124.300**

**YEKATERINBURG, RUSSIA**  
KOLTSOVO  
ILS W RWY 26R CAT I



**MISSED APPROACH**  
Climb straight ahead to SS059, turn LEFT to SS060, then turn LEFT to SS038 climbing to FL060-FL070, then according to chart or to the holding area.



OCA(H)		A	B	C	D						
Straight-in Approach	CAT I	903' (139')	911' (147')	922' (158')	935' (171')						
Circling		1250' (480')	1360' (600')	1740' (970')	1760' (1000')						
GROUND SPEED	km/h		150	180	210	240	270	300	330	360	390
RATE OF DESCENT	m/s		2.3	2.8	3.3	3.7	4.2	4.7	5.1	5.6	6.1
	ft/min		459	551	643	735	827	919	1010	1102	1194

**1** TRANSITION LEVEL:  
- FL050 when QNH is 1013 hPa (760mm mercury column) or above;  
- FL060 when QNH is 977 hPa (733mm mercury column) or above, but less than 1013 hPa (760mm mercury column);  
- FL070 when QNH is less than 977 hPa (733mm mercury column).

**NOTE**  
DME IEU reads zero at RWY 26R THR.

CHANGE: New chart