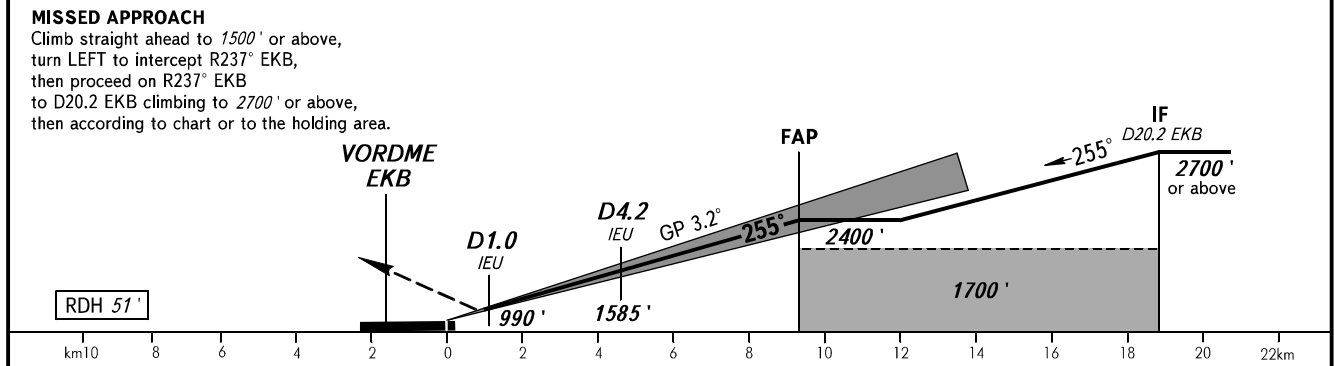
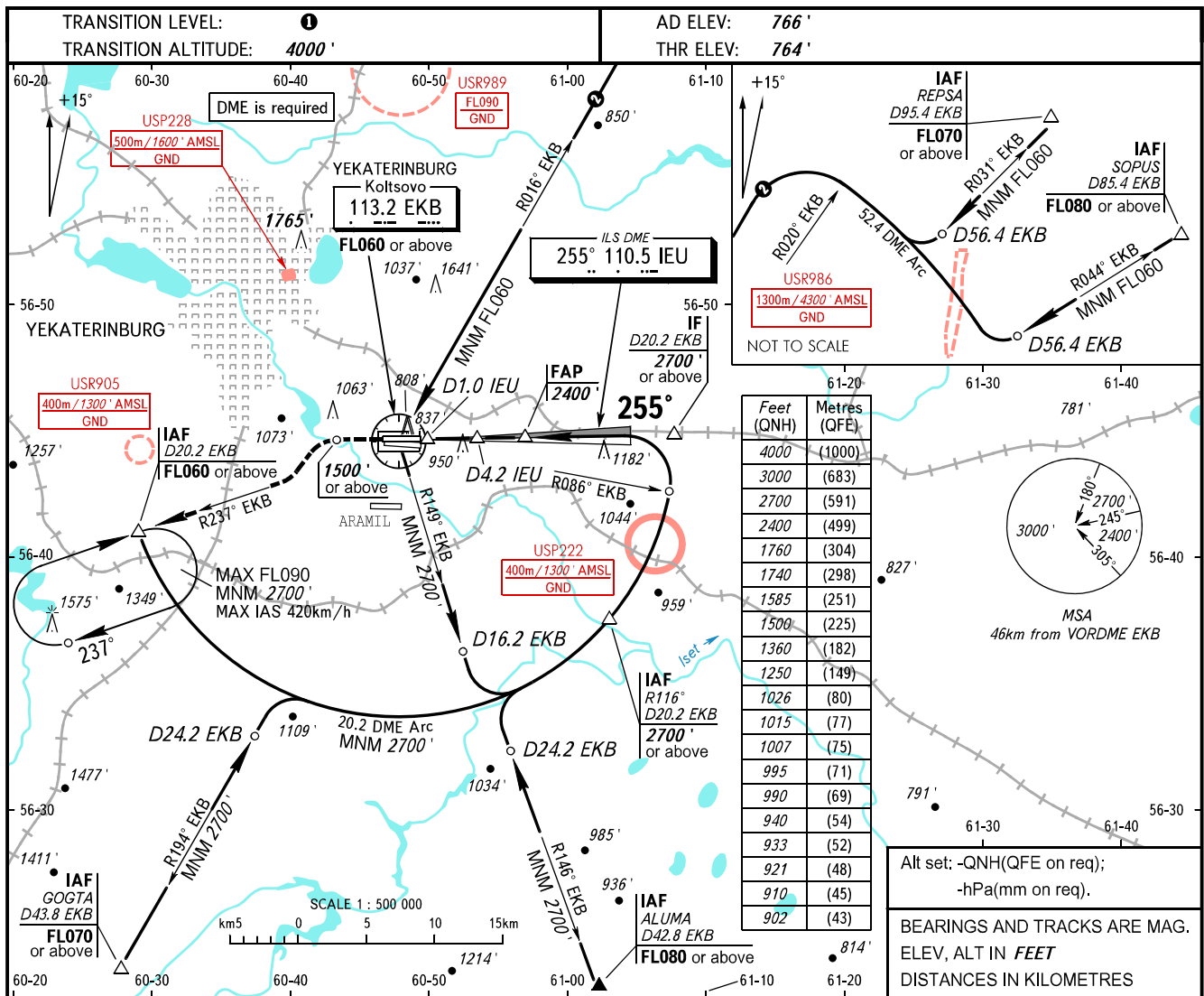


**INSTRUMENT
APPROACH
CHART - ICAO**

KOLTSOVO RADAR **118.700**
KOLTSOVO START **124.300**

YEKATERINBURG, RUSSIA
KOLTSOVO
ILS X RWY 26R CAT I



OCA(H)		GRAD	A	B	C	D
Straight-in Approach	CAT I	3.0%	902' (138')	910' (146')	921' (157')	933' (170')
	CAT I	2.5%	995' (232')	1007' (244')	1015' (252')	1026' (263')
Circling			1250' (480')	1360' (600')	1740' (970')	1760' (1000')

① TRANSITION LEVEL:
- FL050 when QNH is 1013 hPa (760mm mercury column) or above;
- FL060 when QNH is 977 hPa (733mm mercury column) or above, but less than 1013 hPa (760mm mercury column);
- FL070 when QNH is less than 977 hPa (733mm mercury column).

NOTE
DME IEU reads zero at RWY 26R THR.

GROUND SPEED	km/h	150	180	210	240	270	300	330	360	390
		RATE OF DESCENT	m/s	2.3	2.8	3.3	3.7	4.2	4.7	5.1
	ft/min	459	551	643	735	827	919	1010	1102	1194