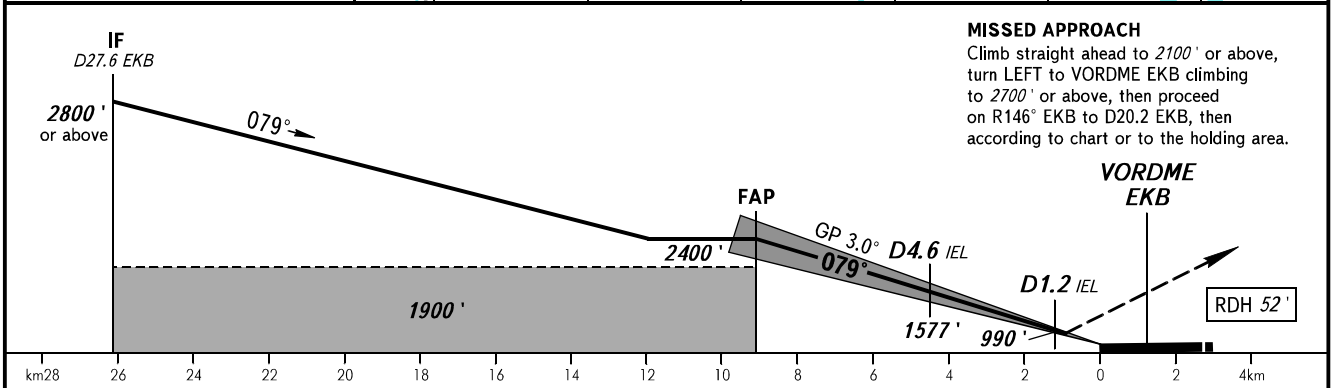
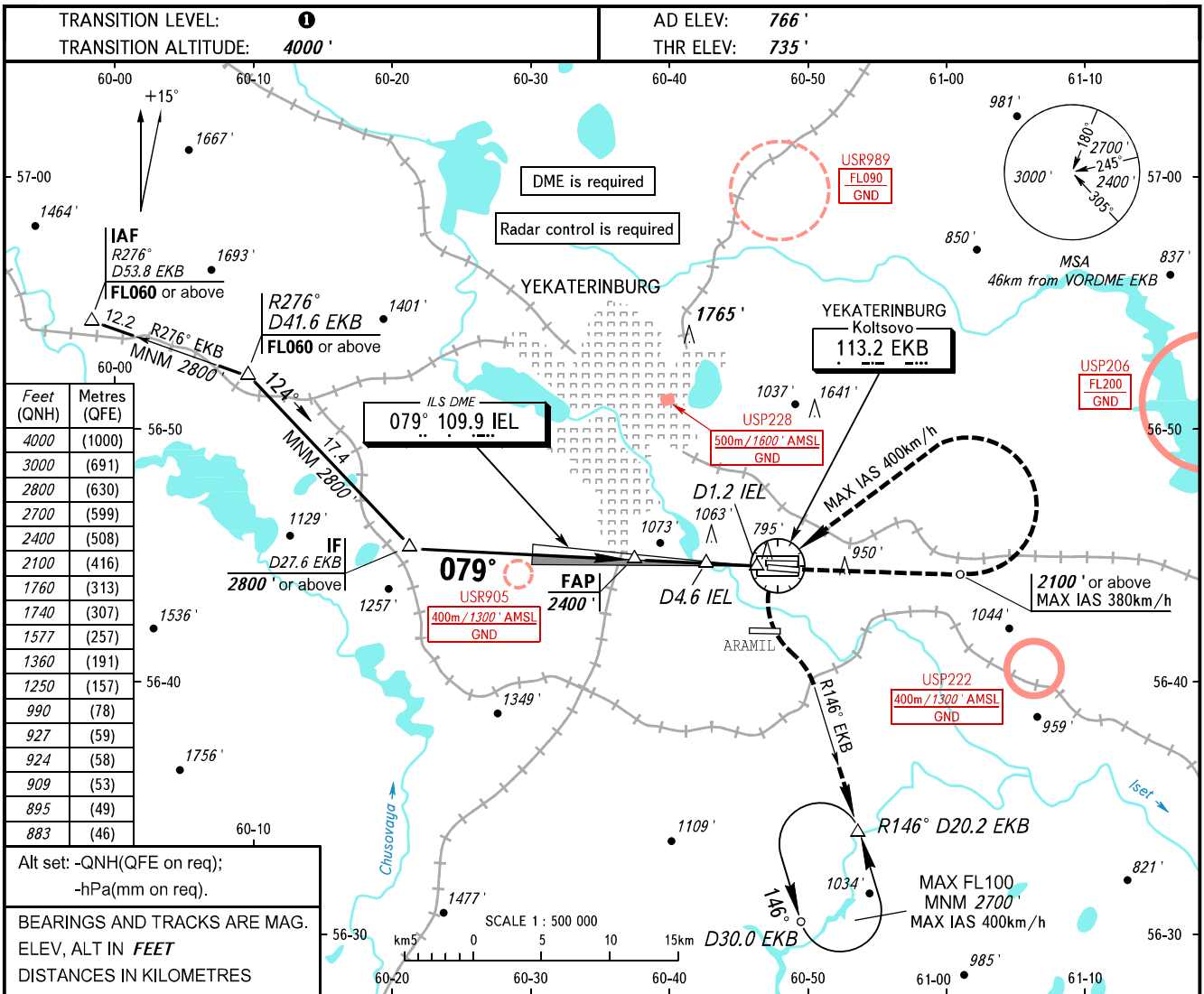


**INSTRUMENT
APPROACH
CHART - ICAO**

KOLTSOVO RADAR **118.700**
KOLTSOVO START **124.300**

YEKATERINBURG, RUSSIA
KOLTSOVO
ILS X RWY 08R CAT I



OCA(H)		A	B	C	D						
Straight-in Approach	CAT I	883' (148')	895' (160')	909' (174')	924' (189')						
Circling		1250' (480')	1360' (600')	1740' (970')	1760' (1000')						
GROUND SPEED	km/h		150	180	210	240	270	300	330	360	390
	m/s		2.2	2.6	3.0	3.5	3.9	4.3	4.8	5.2	5.6
RATE OF DESCENT	ft/min		427	512	597	682	768	853	938	1024	1109

1 TRANSITION LEVEL:
 - FL050 when QNH is 1013 hPa (760mm mercury column) or above;
 - FL060 when QNH is 977 hPa (733mm mercury column) or above, but less than 1013 hPa (760mm mercury column);
 - FL070 when QNH is less than 977 hPa (733mm mercury column).
NOTE
 DME IEL reads zero at RWY 08R THR.

CHANGE: New chart