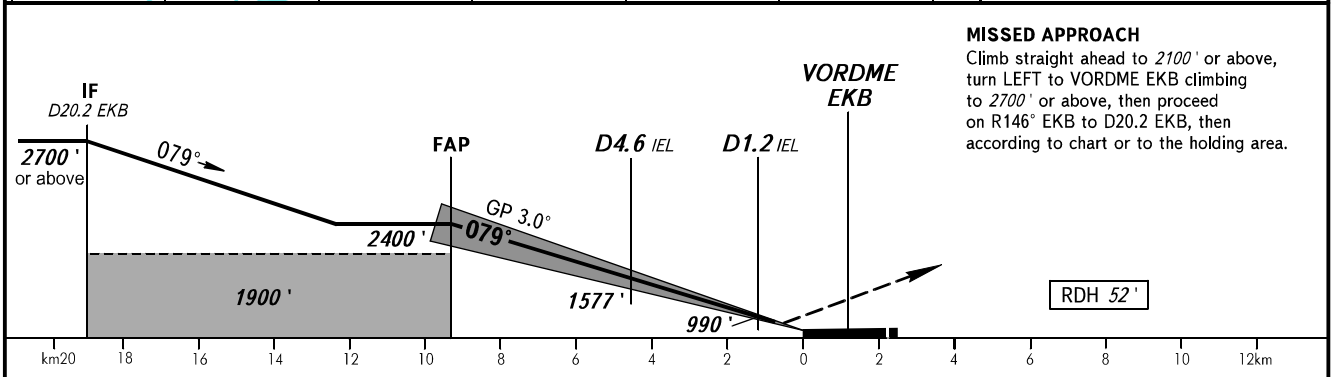
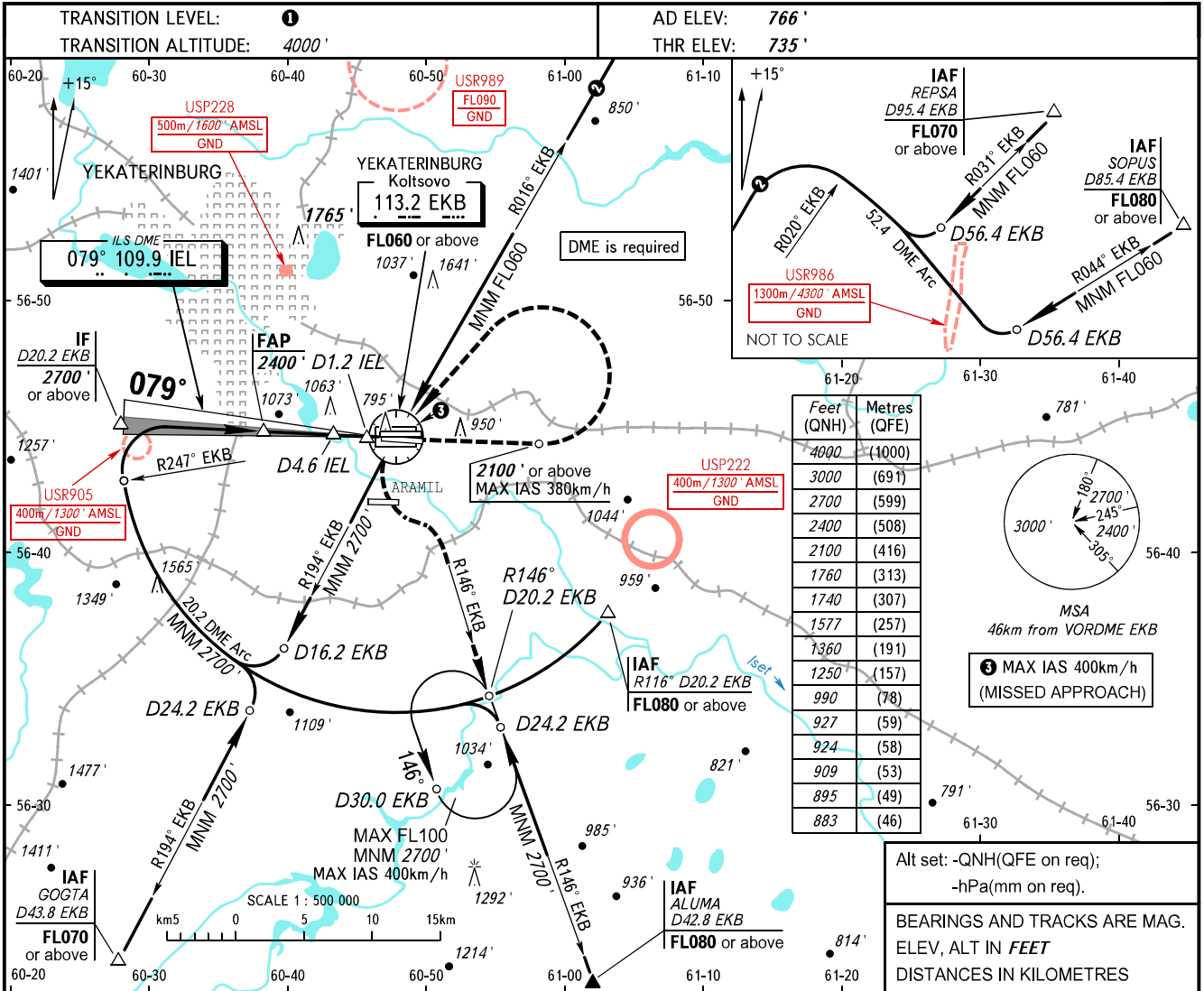


**INSTRUMENT
APPROACH
CHART - ICAO**

KOLTSOVO RADAR 118.700
KOLTSOVO START 124.300

**YEKATERINBURG, RUSSIA
KOLTSOVO
ILS Y RWY 08R CAT I**



MISSED APPROACH
Climb straight ahead to 2100' or above, turn LEFT to VORDME EKB climbing to 2700' or above, then proceed on R146° EKB to D20.2 EKB, then according to chart or to the holding area.

OCA(H)	A	B	C	D						
Straight-in Approach	CAT I	883' (148')	895' (160')	909' (174')	924' (189')					
Circling	1250' (480')	1360' (600')	1740' (970')	1760' (1000')						
GROUND SPEED	km/h	150	180	210	240	270	300	330	360	390
RATE OF DESCENT	m/s	2.2	2.6	3.0	3.5	3.9	4.3	4.8	5.2	5.6
	ft/min	427	512	597	682	768	853	938	1024	1109

1 TRANSITION LEVEL:
- FL050 when QNH is 1013 hPa (760mm mercury column) or above;
- FL060 when QNH is 977 hPa (733mm mercury column) or above, but less than 1013 hPa (760mm mercury column);
- FL070 when QNH is less than 977 hPa (733mm mercury column).
NOTE
DME IEL reads zero at RWY 08R THR.

CHANGE: FL 100