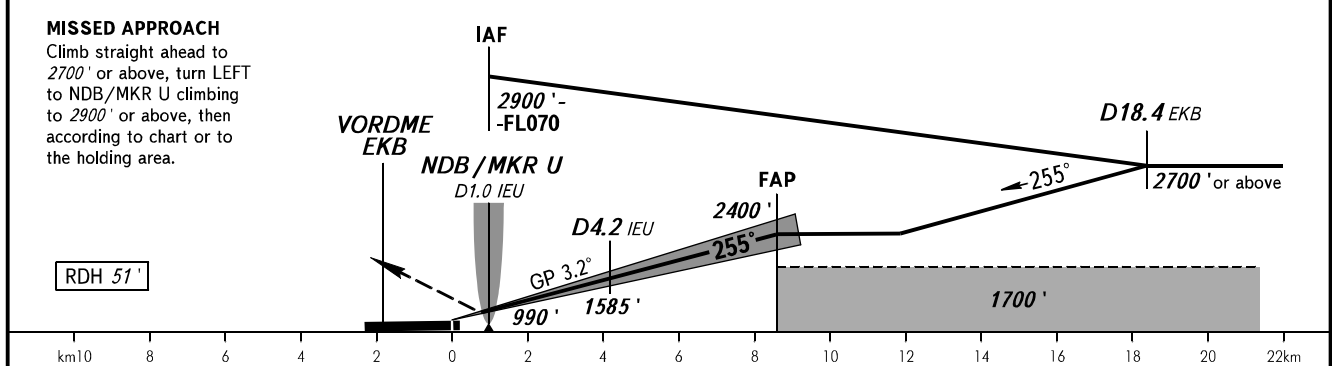
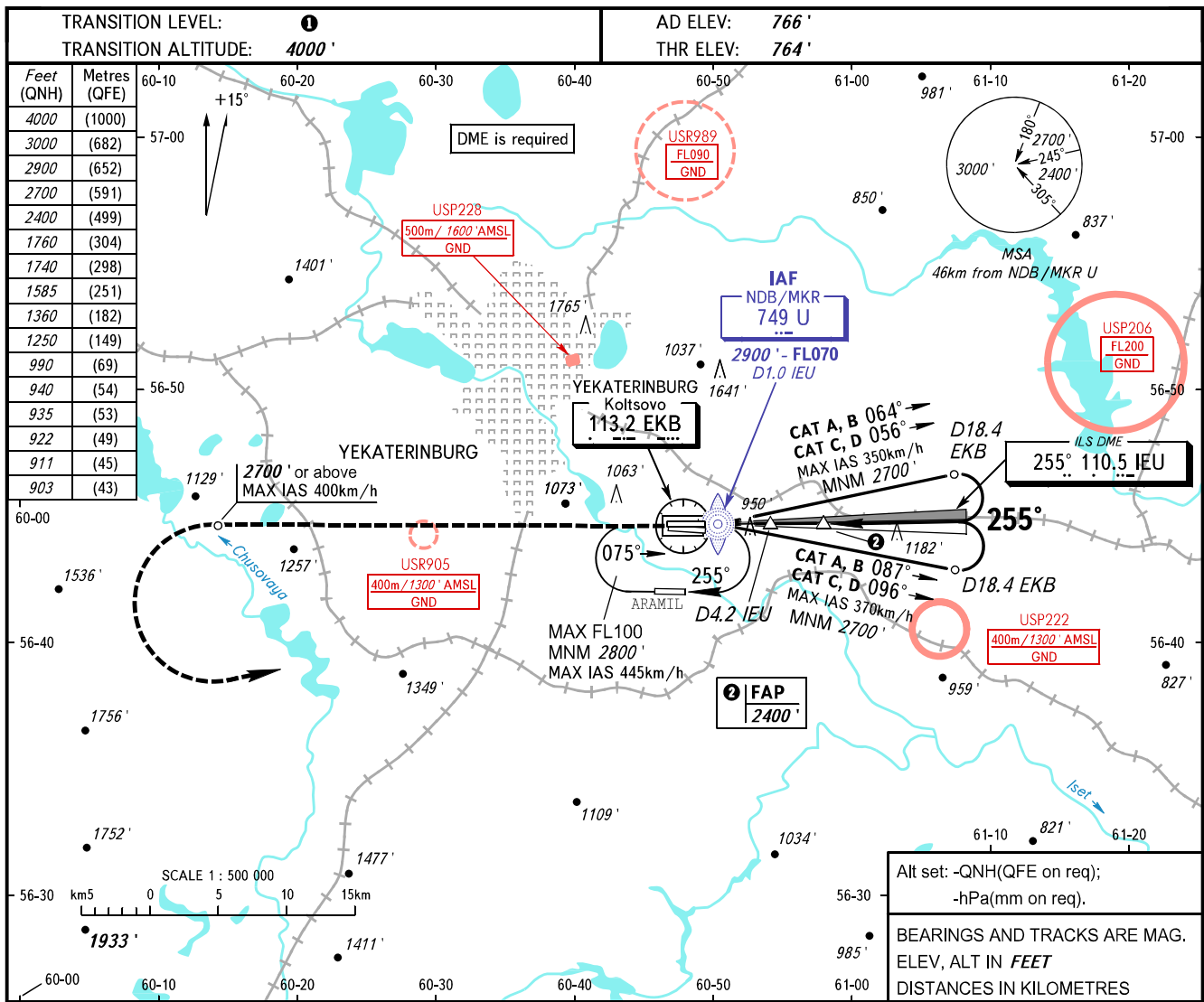


**INSTRUMENT
APPROACH
CHART - ICAO**

KOLTSOVO RADAR 118.700
KOLTSOVO START 124.300

**YEKATERINBURG, RUSSIA
KOLTSOVO
ILS Z RWY 26R CAT I**



OCA(H)		A	B	C	D						
Straight-in Approach	CAT I	903' (139')	911' (147')	922' (158')	935' (176')						
Circling		1250' (480')	1360' (600')	1740' (970')	1760' (1000')						
GROUND SPEED		km/h	150	180	210	240	270	300	330	360	390
RATE OF DESCENT		m/s	2.3	2.8	3.3	3.7	4.2	4.7	5.1	5.6	6.1
		ft/min	459	551	643	735	827	919	1010	1102	1194

1 TRANSITION LEVEL:
 - FL050 when QNH is 1013 hPa (760mm mercury column) or above;
 - FL060 when QNH is 977 hPa (733mm mercury column) or above, but less than 1013 hPa (760mm mercury column);
 - FL070 when QNH is less than 977 hPa (733mm mercury column).
NOTE
 DME IEU reads zero at RWY 26R THR.