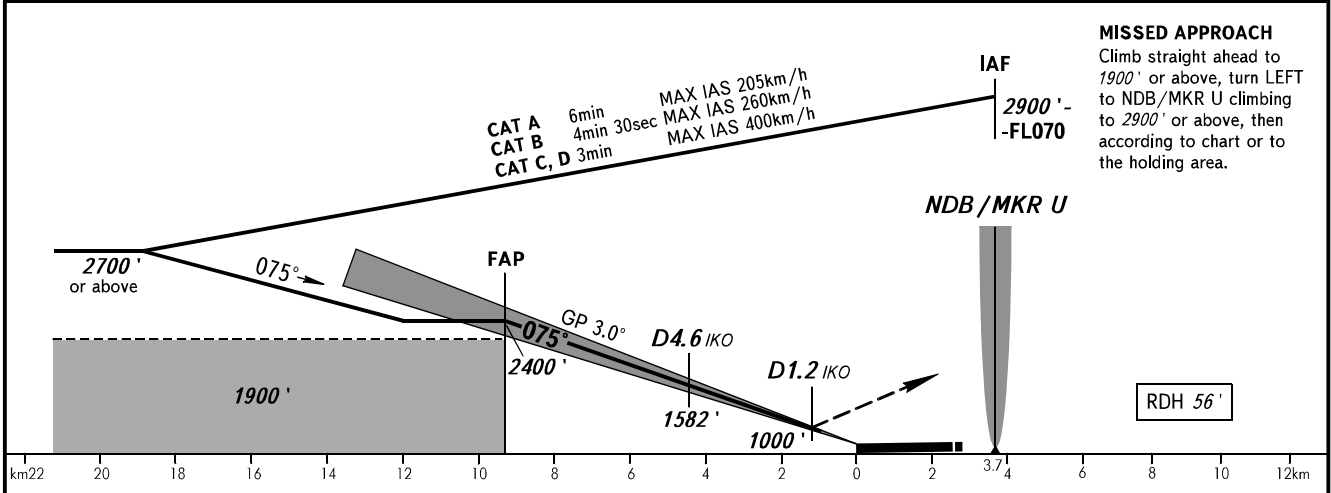
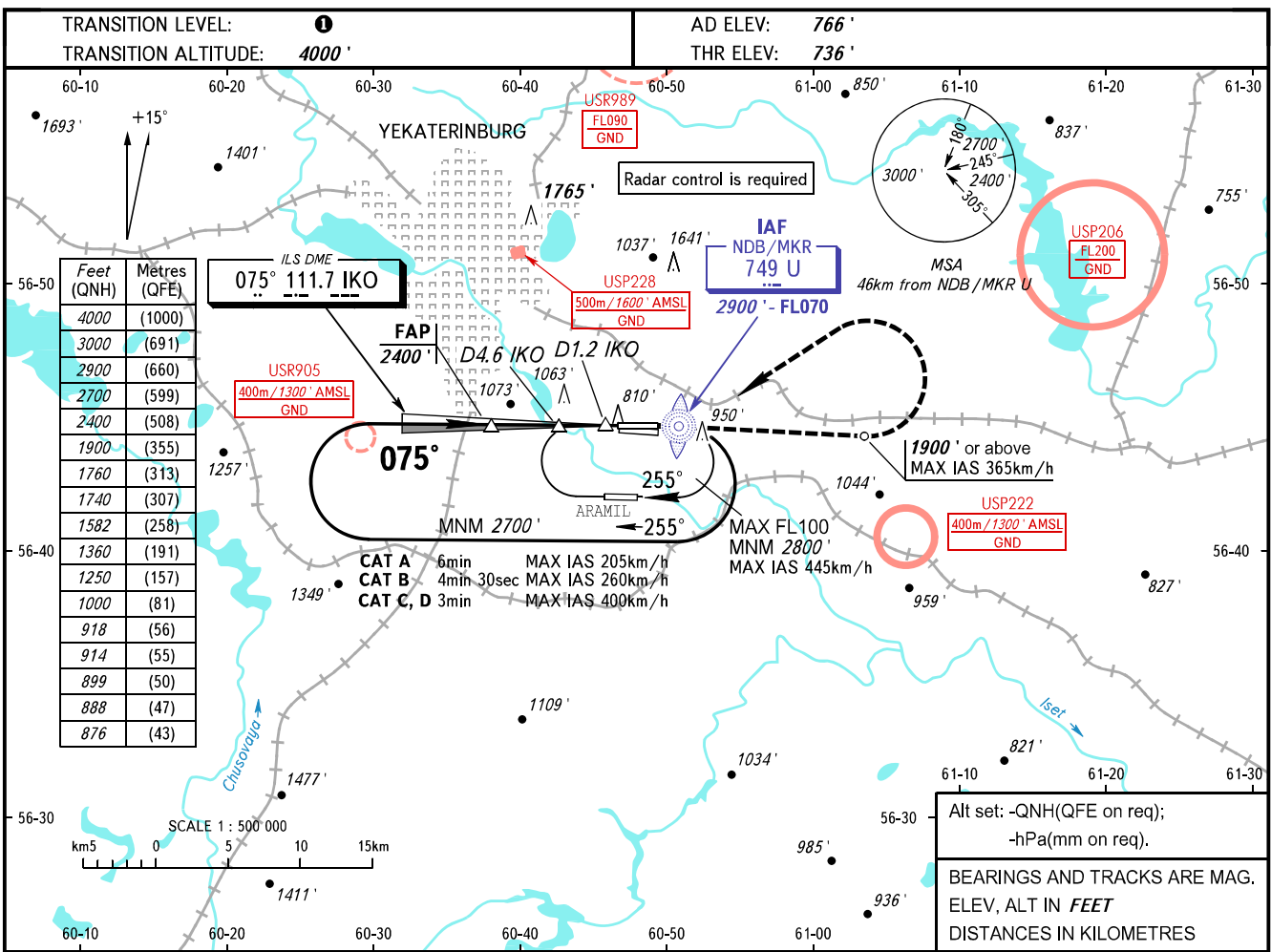


**INSTRUMENT  
APPROACH  
CHART - ICAO**

KOLTSOVO RADAR **118.700**  
KOLTSOVO START **124.300**

**YEKATERINBURG, RUSSIA**  
KOLTSOVO  
ILS Z RWY 08L CAT I



OCA(H)		A	B	C	D						
Straight-in Approach	<b>CAT I</b>	876' (141')	888' (153')	899' (164')	914' (179')	<b>1</b> TRANSITION LEVEL: - FL050 when QNH is 1013 hPa (760mm mercury column) or above; - FL060 when QNH is 977 hPa (733mm mercury column) or above, but less than 1013 hPa (760mm mercury column); - FL070 when QNH is less than 977 hPa (733mm mercury column). <b>NOTE</b> DME IKO reads zero at RWY 08L THR.					
Circling		1250' (480')	1360' (600')	1740' (970')	1760' (1000')						
GROUND SPEED		km/h	150	180	210	240	270	300	330	360	390
RATE OF DESCENT		m/s	2.2	2.6	3.0	3.5	3.9	4.3	4.8	5.2	5.6
		ft/min	427	512	597	682	768	853	938	1024	1109

CHANGE: New chart