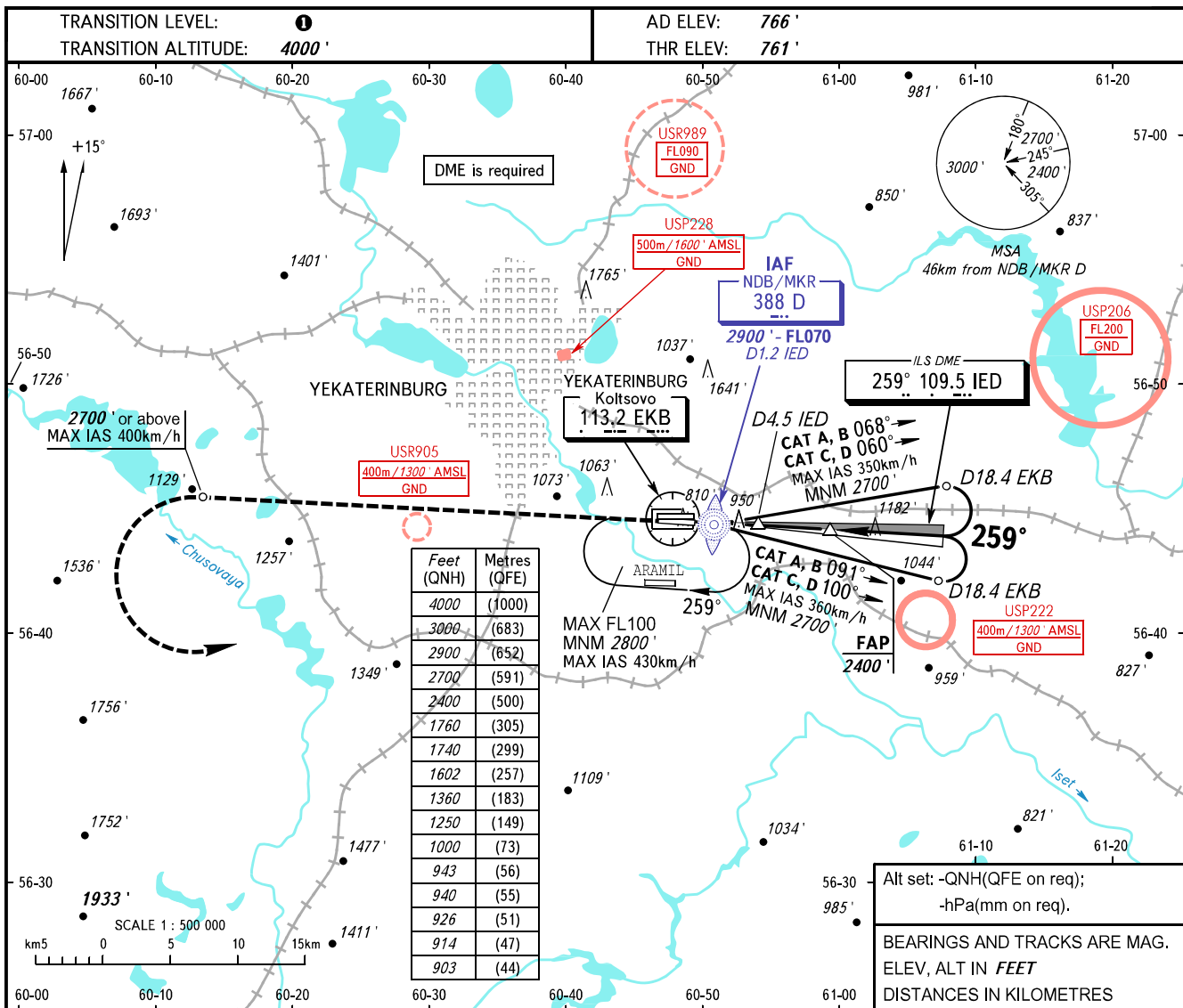


**INSTRUMENT
APPROACH
CHART - ICAO**

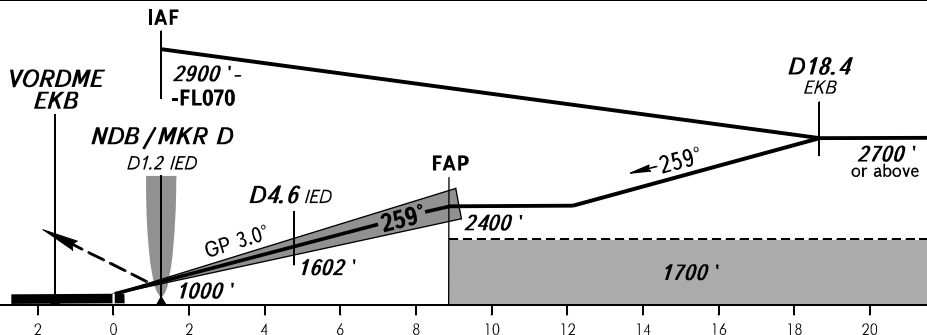
KOLTSOVO RADAR **118.700**
KOLTSOVO START **124.300**

YEKATERINBURG, RUSSIA
KOLTSOVO
ILS Z RWY 26L CAT I/II



MISSED APPROACH

Climb straight ahead to 2700' or above, turn LEFT to NDB/MKR D climbing to 2900' or above, then according to chart or to the holding area.



OCA(H)	A	B	C	D	
Straight-in Approach	CAT I	903' (142')	914' (153')	926' (165')	940' (179')
	CAT II	(49')	(60')	(73')	(87')
Circling	1250' (480')	1360' (600')	1740' (970')	1760' (1000')	

- 1** **TRANSITION LEVEL:**
- FL050 when QNH is 1013 hPa (760mm mercury column) or above;
 - FL060 when QNH is 977 hPa (733mm mercury column) or above, but less than 1013 hPa (760mm mercury column);
 - FL070 when QNH is less than 977 hPa (733mm mercury column).
- NOTE**
DME IED reads zero at RWY 26L THR.

GROUND SPEED	km/h	150	180	210	240	270	300	330	360	390
	m/s	2.2	2.6	3.0	3.5	3.9	4.3	4.8	5.2	5.6
RATE OF DESCENT	ft/min	427	512	597	682	768	853	938	1024	1109