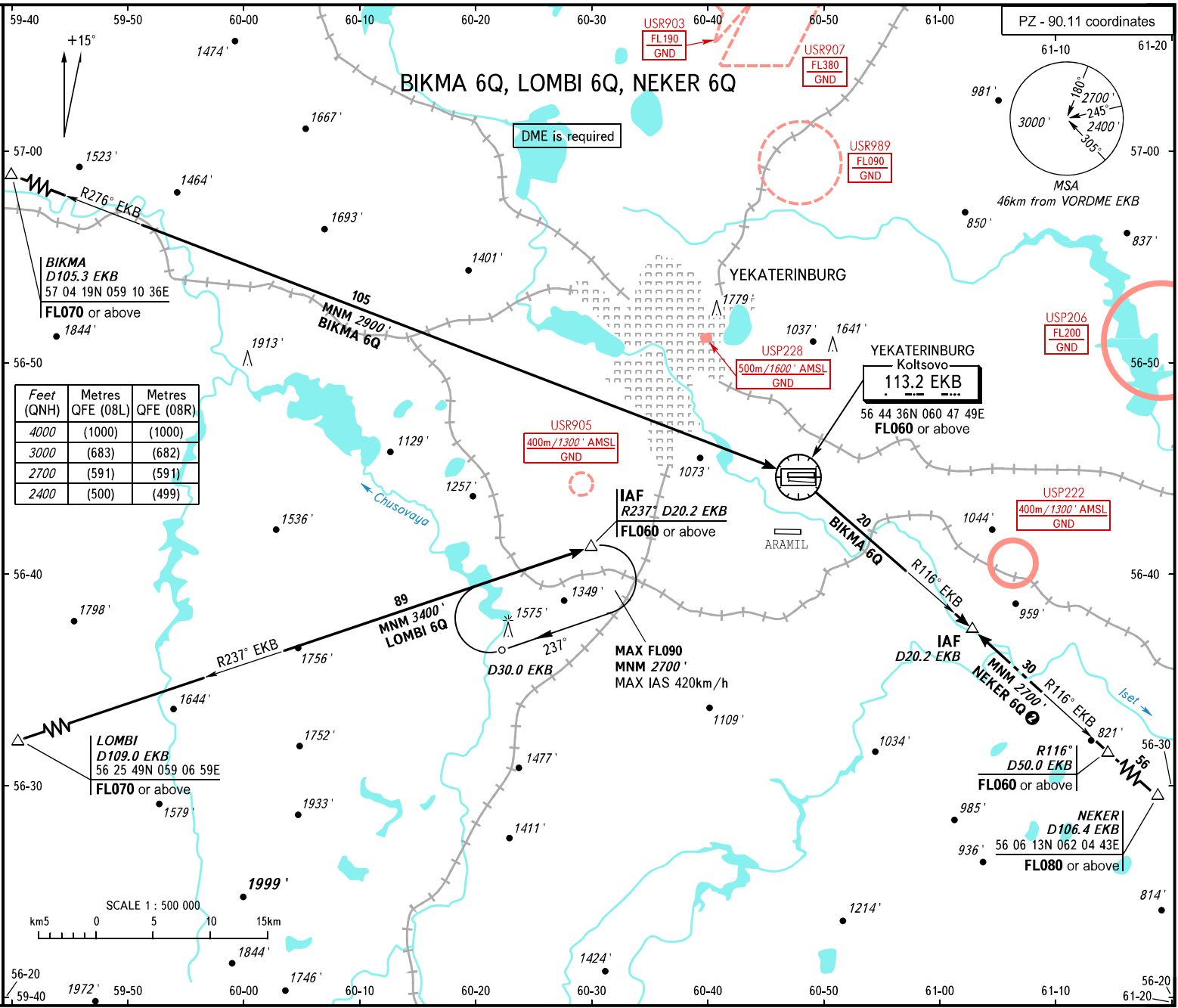


STANDARD ARRIVAL CHART  
INSTRUMENT (STAR) - ICAO

TRANSITION  
LEVEL: **1**

YEKATERINBURG, RUSSIA  
KOLTISOVO  
RWY 26R, 26L



Feet (QNH)	Metres QFE (08L)	Metres QFE (08R)
4000	(1000)	(1000)
3000	(683)	(682)
2700	(591)	(591)
2400	(500)	(499)

**1** TRANSITION LEVEL:

- FL050 when QNH is 1013 hPa (760mm mercury column) or above;
- FL060 when QNH is 977 hPa (733mm mercury column) or above, but less than 1013 hPa (760mm mercury column);
- FL070 when QNH is less than 977 hPa (733mm mercury column).

**2** WARNING

NEKER 6Q by ATC only.

BEARINGS AND TRACKS ARE MAGNETIC  
ALTITUDES AND ELEVATIONS IN FEET  
DISTANCES IN KILOMETRES

KOLTISOVO APPROACH  
KOLTISOVO RADAR  
KOLTISOVO START  
125.900  
118.700  
124.300