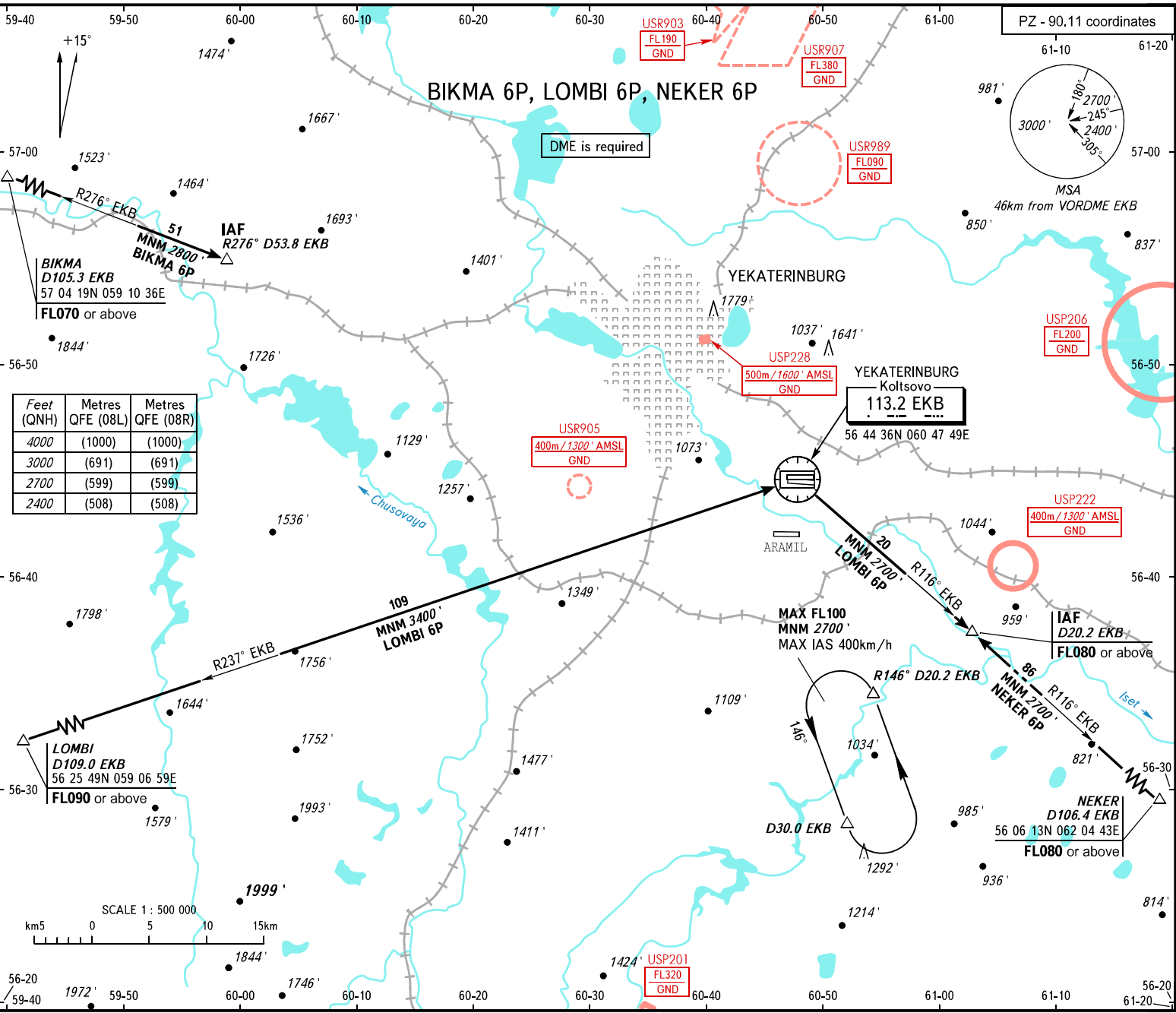


STANDARD ARRIVAL CHART  
INSTRUMENT (STAR) - ICAO

TRANSITION  
LEVEL: **1**

YEKATERINBURG, RUSSIA  
KOLTSOVO  
RWY 08L, 08R



Feet (QNH)	Metres QFE (08L)	Metres QFE (08R)
4000	(1000)	(1000)
3000	(691)	(691)
2700	(599)	(599)
2400	(508)	(508)

**1** TRANSITION LEVEL:

- FL050 when QNH is 1013 hPa (760mm mercury column) or above;
- FL060 when QNH is 977 hPa (733mm mercury column) or above, but less than 1013 hPa (760mm mercury column);
- FL070 when QNH is less than 977 hPa (733mm mercury column).

**WARNING**

NEKER 6P by ATC only.

**BEARINGS AND TRACKS ARE MAGNETIC**  
**ALTITUDES AND ELEVATIONS IN FEET**  
**DISTANCES IN KILOMETRES**

**KOLTSOVO APPROACH**  
125.900

**KOLTSOVO RADAR**  
118.700

**KOLTSOVO START**  
124.300