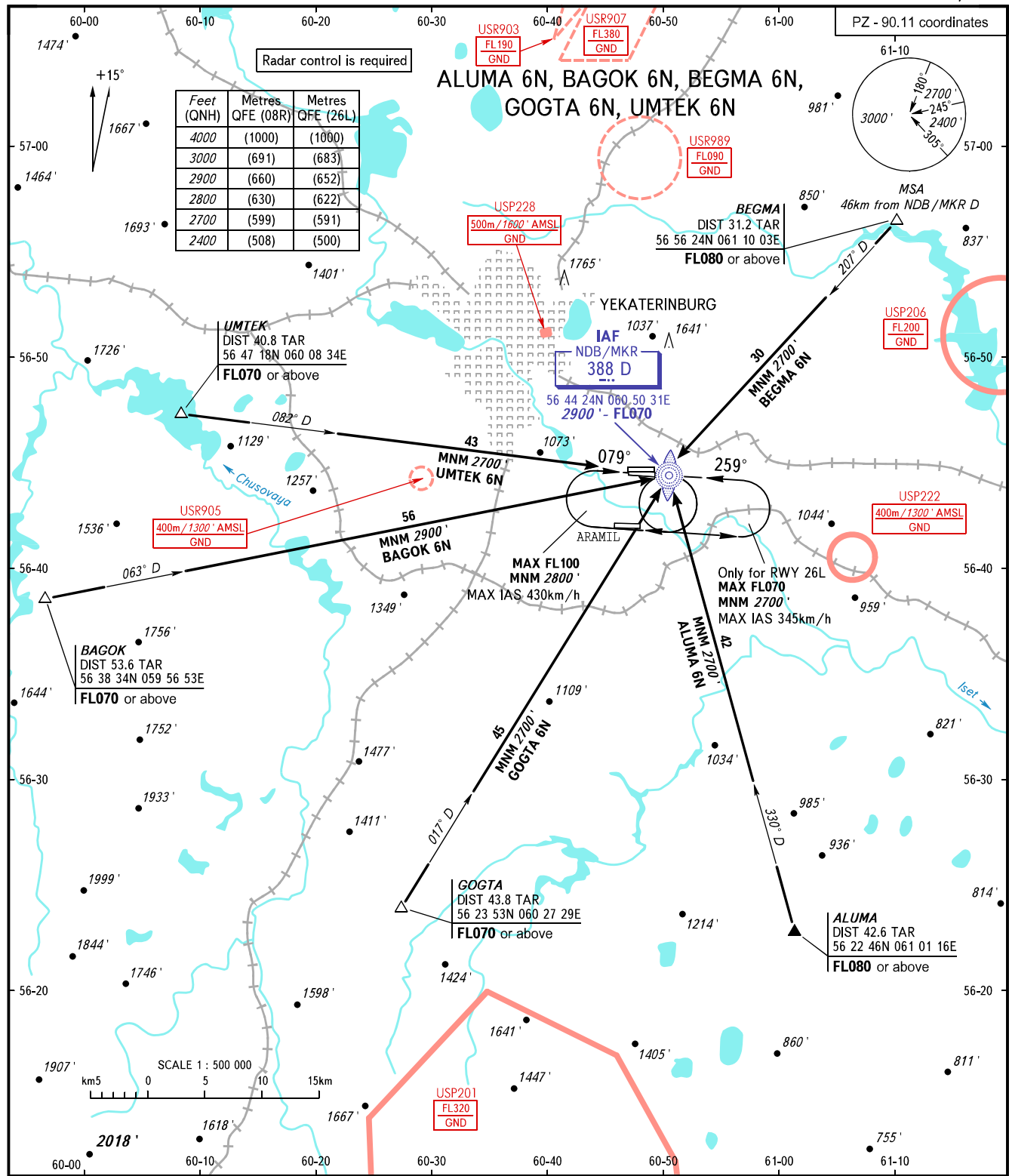


STANDARD ARRIVAL CHART
INSTRUMENT (STAR) - ICAO

YEKATERINBURG, RUSSIA
KOLTSOVO
RWY 08R/26L

TRANSITION
LEVEL: **1**



KOLTSOVO APPROACH **125.900**
KOLTSOVO RADAR **118.700**
KOLTSOVO START **124.300**

1 TRANSITION LEVEL:
- FL050 when QNH is 1013 hPa (760mm mercury column) or above;
- FL060 when QNH is 977 hPa (733mm mercury column) or above, but less than 1013 hPa (760mm mercury column);
- FL070 when QNH is less than 977 hPa (733mm mercury column).

BEARINGS AND TRACKS ARE MAGNETIC
ALTITUDES AND ELEVATIONS IN FEET
DISTANCES IN KILOMETRES