

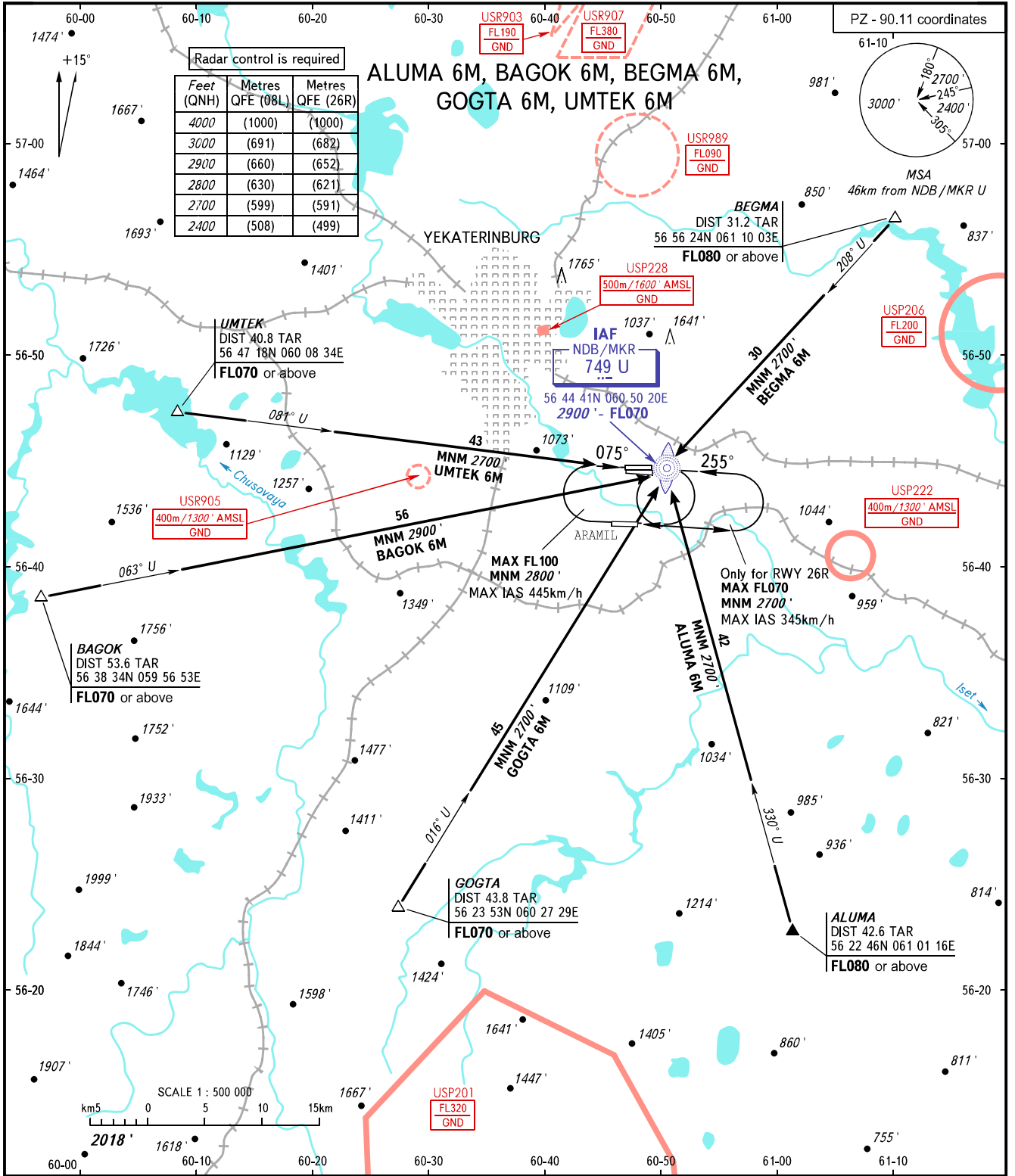
STANDARD ARRIVAL CHART
INSTRUMENT (STAR) - ICAO

YEKATERINBURG, RUSSIA

KOLTSOVO

RWY 08L/26R

TRANSITION
LEVEL : **1**



Radar control is required

Feet (QNH)	Metres QFE (08L)	Metres QFE (26R)
4000	(1000)	(1000)
3000	(691)	(682)
2900	(660)	(652)
2800	(630)	(621)
2700	(599)	(591)
2400	(508)	(499)

KOLTSOVO APPROACH **125.900**
KOLTSOVO RADAR **118.700**
KOLTSOVO START **124.300**

- 1** TRANSITION LEVEL:
- FL050 when QNH is 1013 hPa (760mm mercury column) or above;
 - FL060 when QNH is 977 hPa (733mm mercury column) or above, but less than 1013 hPa (760mm mercury column);
 - FL070 when QNH is less than 977 hPa (733mm mercury column).

BEARINGS AND TRACKS ARE MAGNETIC
ALTITUDES AND ELEVATIONS IN FEET
DISTANCES IN KILOMETRES

CHANGE: RWY