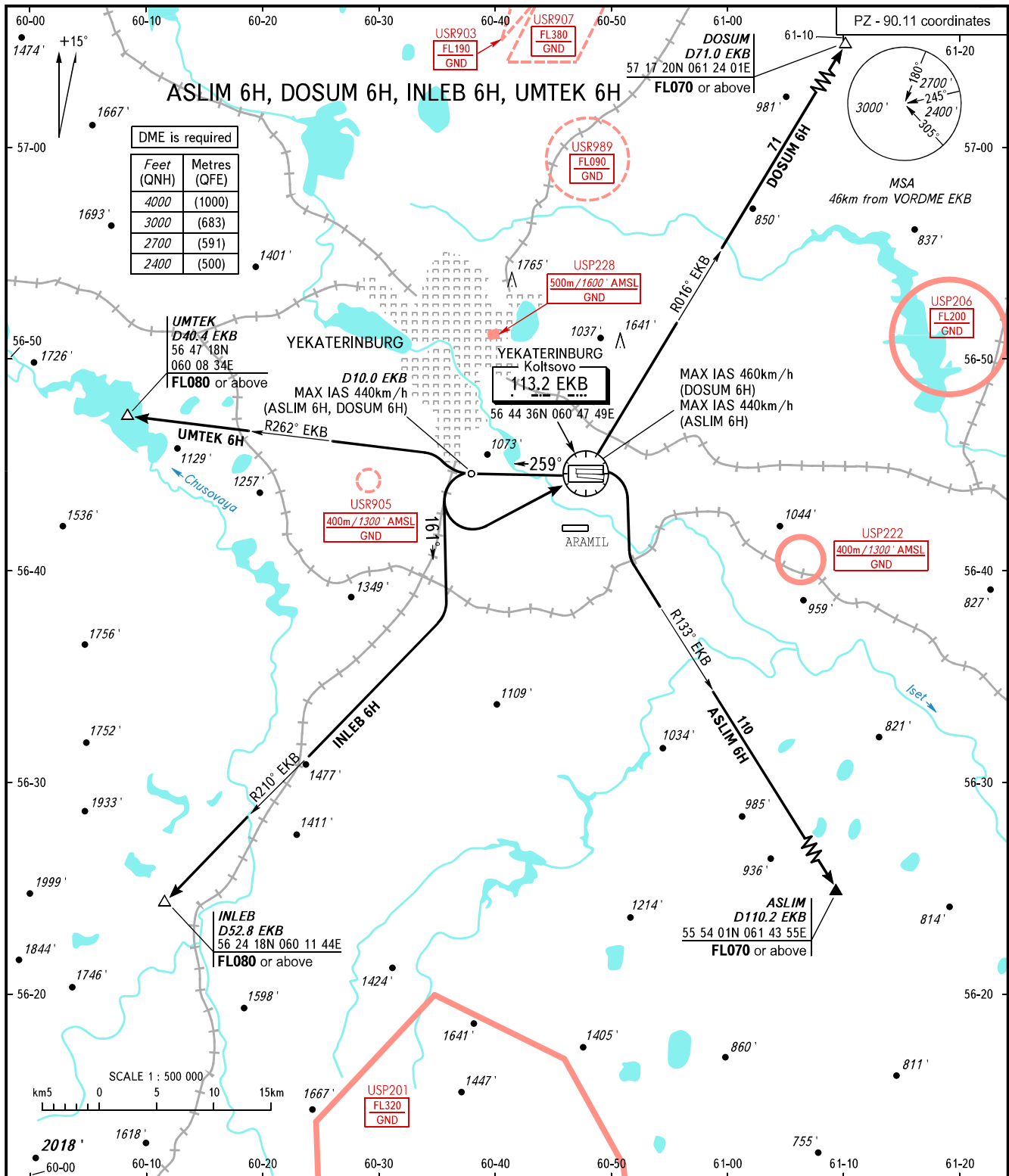


STANDARD DEPARTURE CHART
INSTRUMENT (SID) - ICAO

YEKATERINBURG, RUSSIA
KOLTSOVO
RWY 26L

TRANSITION
ALTITUDE : 4000'



KOLTSOVO START **124.300**
KOLTSOVO RADAR **118.700**
KOLTSOVO APPROACH **125.900**

WARNING
The minimum climb gradients are as follows (required due to the airspace structure):
 - 3.8% up to FL080 for SID INLEB 6H;
 - 5.7% up to FL080 for SID UMTEK 6H;
 - 7.0% for SID ASLIM 6H, if unable to maintain climb gradient, by ATC unit instruction.

BEARINGS AND TRACKS ARE MAGNETIC
ALTITUDES AND ELEVATIONS IN FEET
DISTANCES IN KILOMETRES