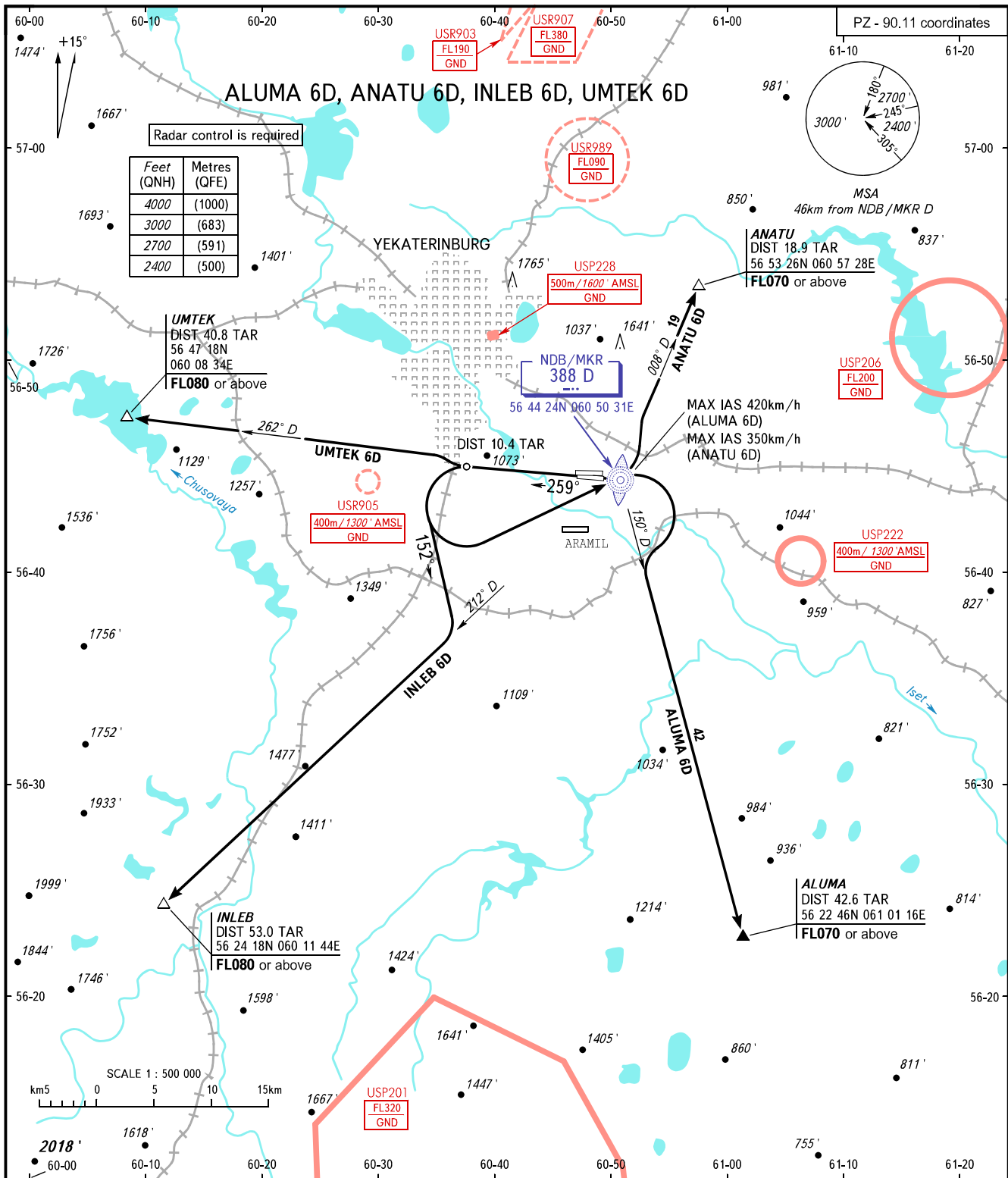


STANDARD DEPARTURE CHART
INSTRUMENT (SID) - ICAO

TRANSITION
ALTITUDE: **4000'**

YEKATERINBURG, RUSSIA
KOLTSOVO
RWY 26L



KOLTSOVO START **124.300**
 KOLTSOVO RADAR **118.700**
 KOLTSOVO APPROACH **125.900**

- WARNING:**
- The minimum climb gradients are as follows (required due to the airspace structure):
 - 3.8% up to FL070 for SID ANATU 6D;
 - 3.7% up to FL080 for SID INLEB 6D;
 - 5.7% up to FL080 for SID UMTEK 6D.
 - Initial turn by ATC.

BEARINGS AND TRACKS ARE MAGNETIC
 ALTITUDES AND ELEVATIONS IN FEET
 DISTANCES IN KILOMETRES