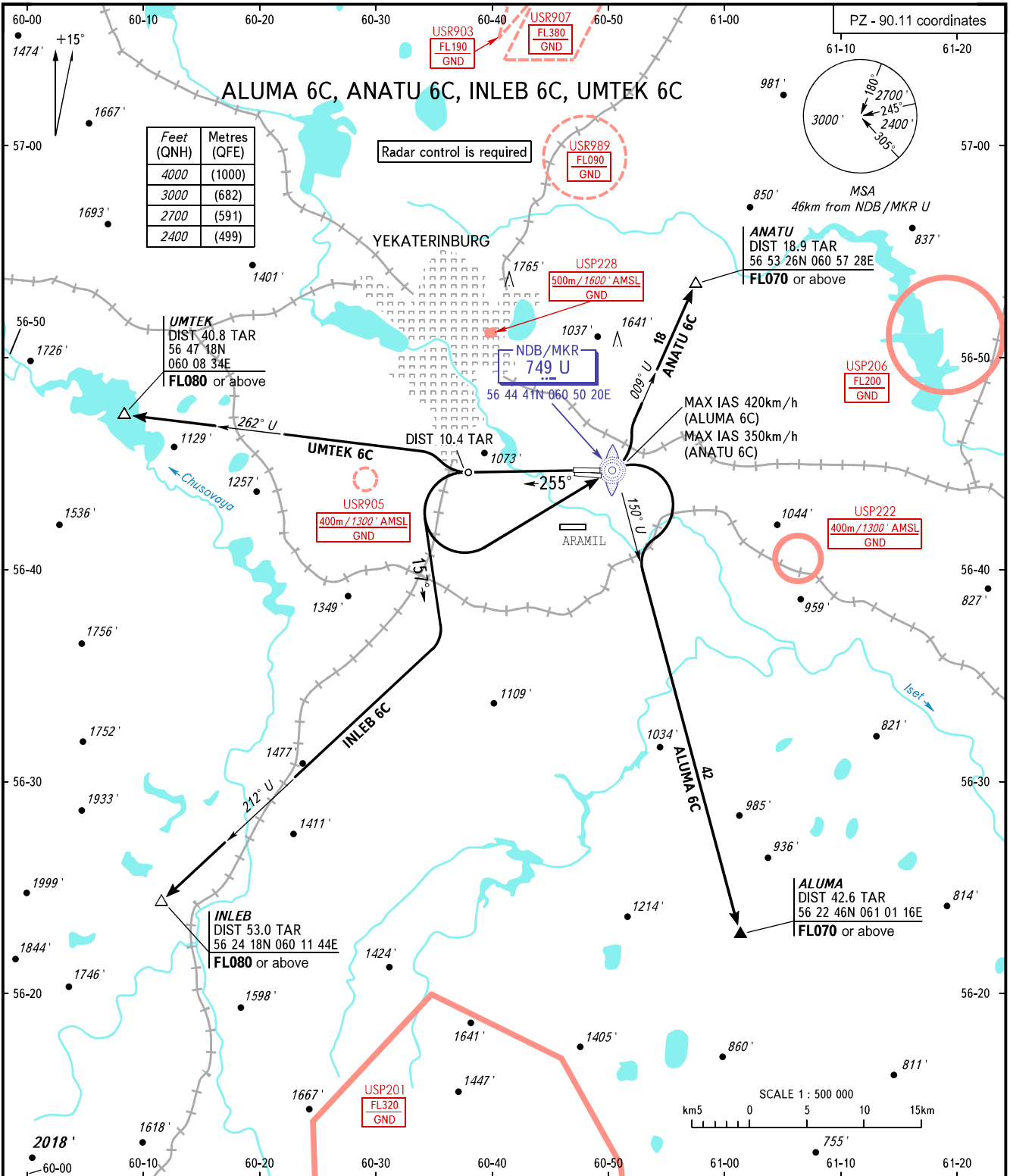


STANDARD DEPARTURE CHART
INSTRUMENT (SID) - ICAO

YEKATERINBURG, RUSSIA
KOLTSOVO
RWY 26R

TRANSITION
ALTITUDE: 4000'



KOLTSOVO START **124.300**
KOLTSOVO RADAR **118.700**
KOLTSOVO APPROACH **125.900**

WARNING:

- The minimum climb gradients are as follows (required due to the airspace structure):
 - 3.7% up to FL070 for SID ANATU 6C;
 - 3.8% up to FL080 for SID INLEB 6C;
 - 5.7% up to FL080 for SID UMTEK 6C.
- Initial turn by ATC.

BEARINGS AND TRACKS ARE MAGNETIC
ALTITUDES AND ELEVATIONS IN FEET
DISTANCES IN KILOMETRES

CHANGE: New chart