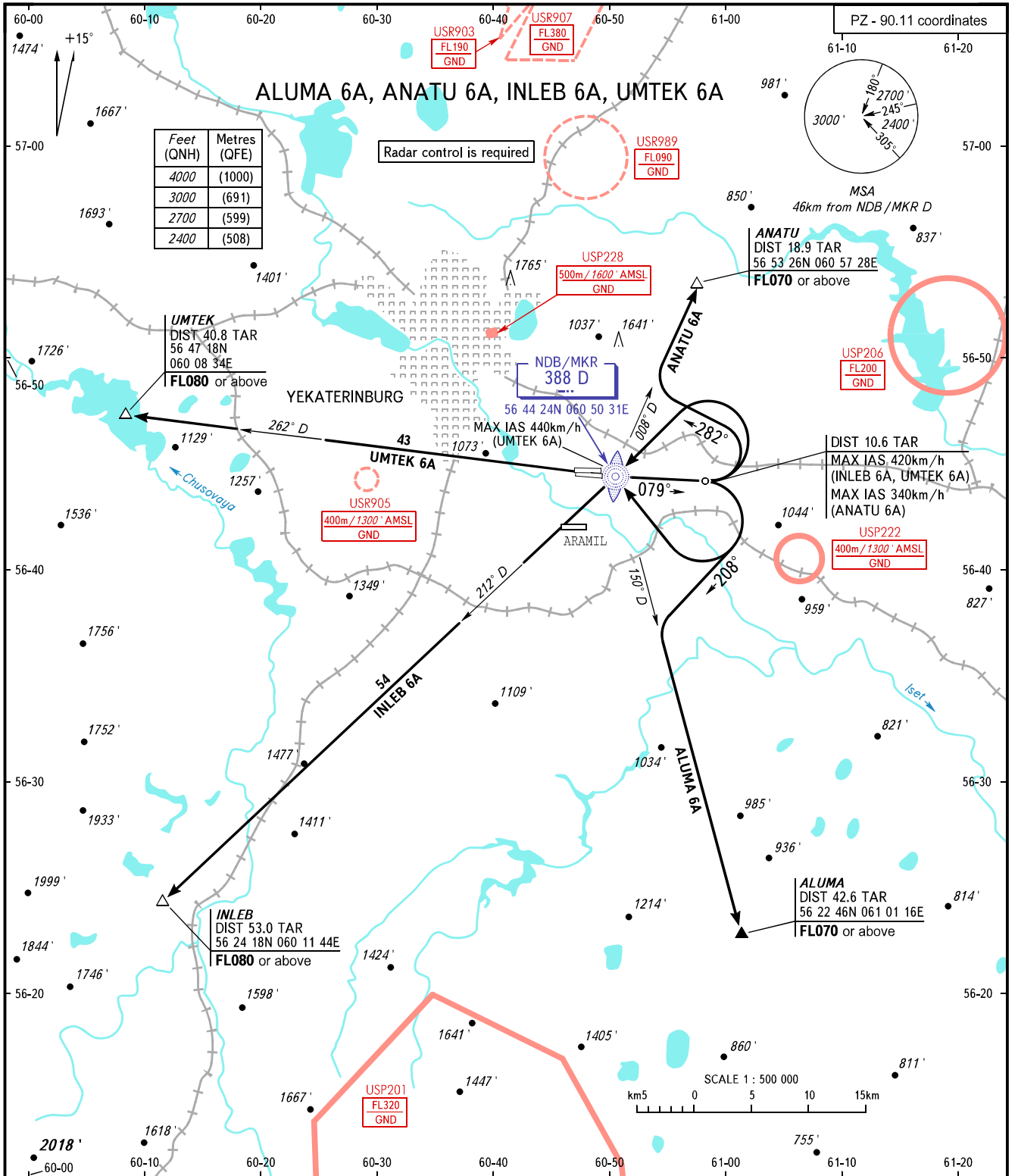


STANDARD DEPARTURE CHART  
INSTRUMENT (SID) - ICAO

YEKATERINBURG, RUSSIA  
KOLTSOVO  
RWY 08R

TRANSITION  
ALTITUDE: 4000'



KOLTSOVO START 124.300  
KOLTSOVO RADAR 118.700  
KOLTSOVO APPROACH 125.900

BEARINGS AND TRACKS ARE MAGNETIC  
ALTITUDES AND ELEVATIONS IN FEET  
DISTANCES IN KILOMETRES

CHANGE: NIL