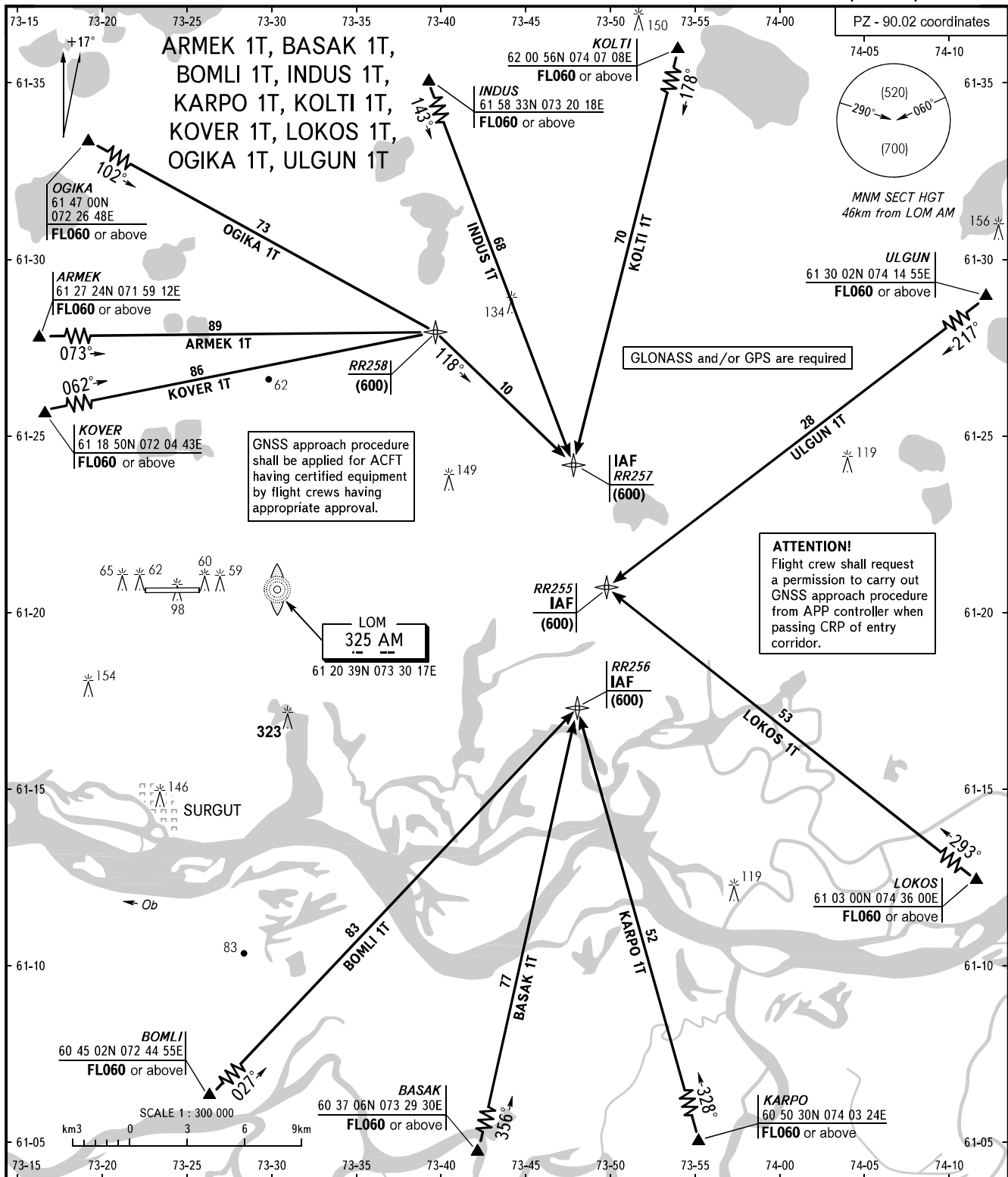


STANDARD ARRIVAL CHART
INSTRUMENT (STAR) - ICAO

TRANSITION
LEVEL: **1**

SURGUT, RUSSIA
SURGUT
RNAV (GNSS) RWY 25



KRUG **120.300**
APPROACH **129.300**

1 TRANSITION LEVEL:
- FL040 when QFE is 742mm mercury column or above;
- FL050 when QFE is less than 742mm mercury column.

BEARINGS AND TRACKS ARE MAGNETIC
ALTITUDES, HEIGHTS AND ELEVATIONS ARE IN METRES
DISTANCES ARE IN KILOMETRES