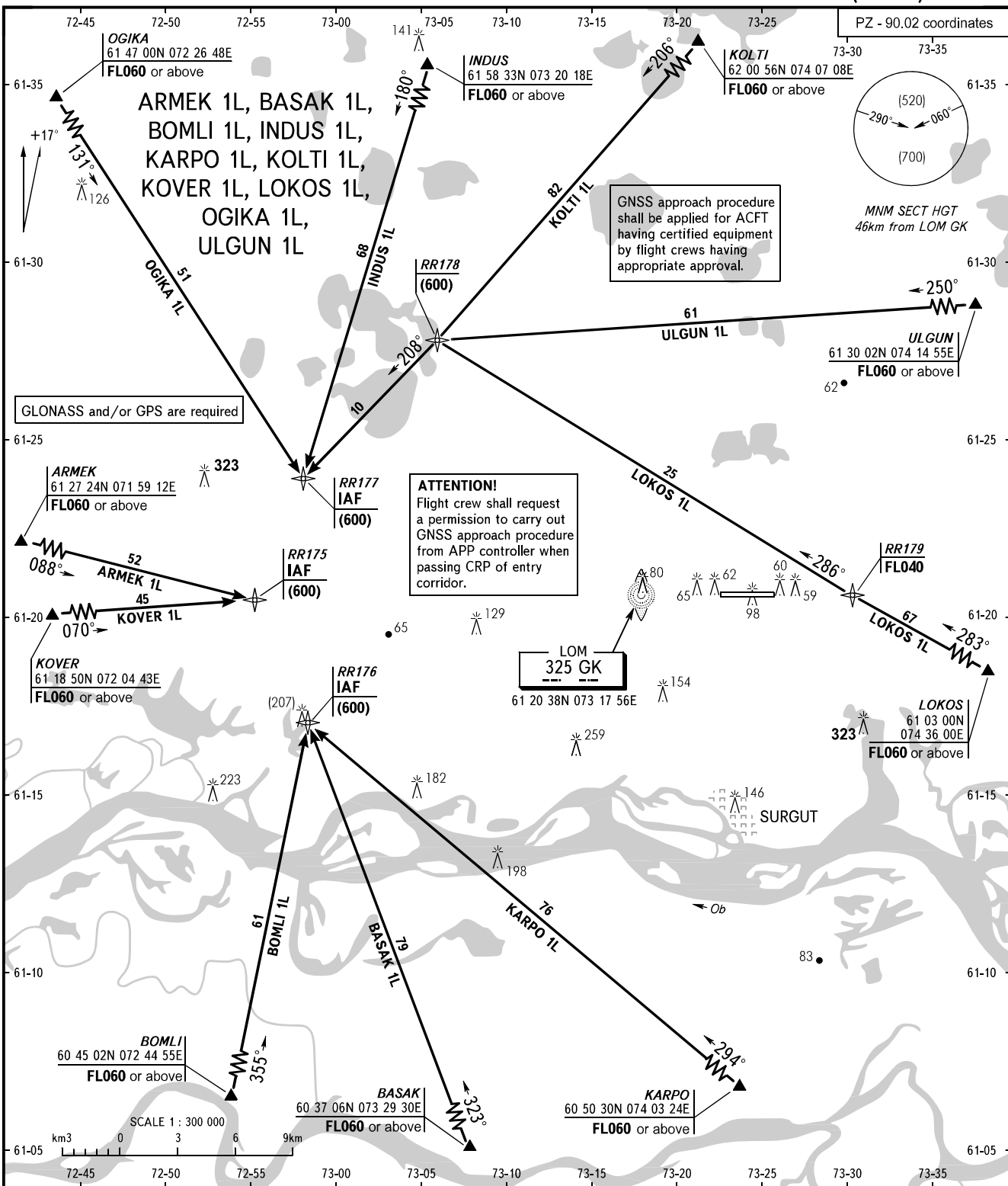


STANDARD ARRIVAL CHART
INSTRUMENT (STAR) - ICAO

SURGUT, RUSSIA
SURGUT
RNAV (GNSS) RWY 07

TRANSITION
LEVEL : **1**



KRUG APPROACH 120.300
129.300

1 TRANSITION LEVEL:
- FL040 when QFE is 742mm mercury column or above;
- FL050 when QFE is less than 742mm mercury column.

CHANGE: TR1

BEARINGS AND TRACKS ARE MAGNETIC
ALTITUDES, HEIGHTS AND ELEVATIONS ARE IN METRES
DISTANCES ARE IN KILOMETRES