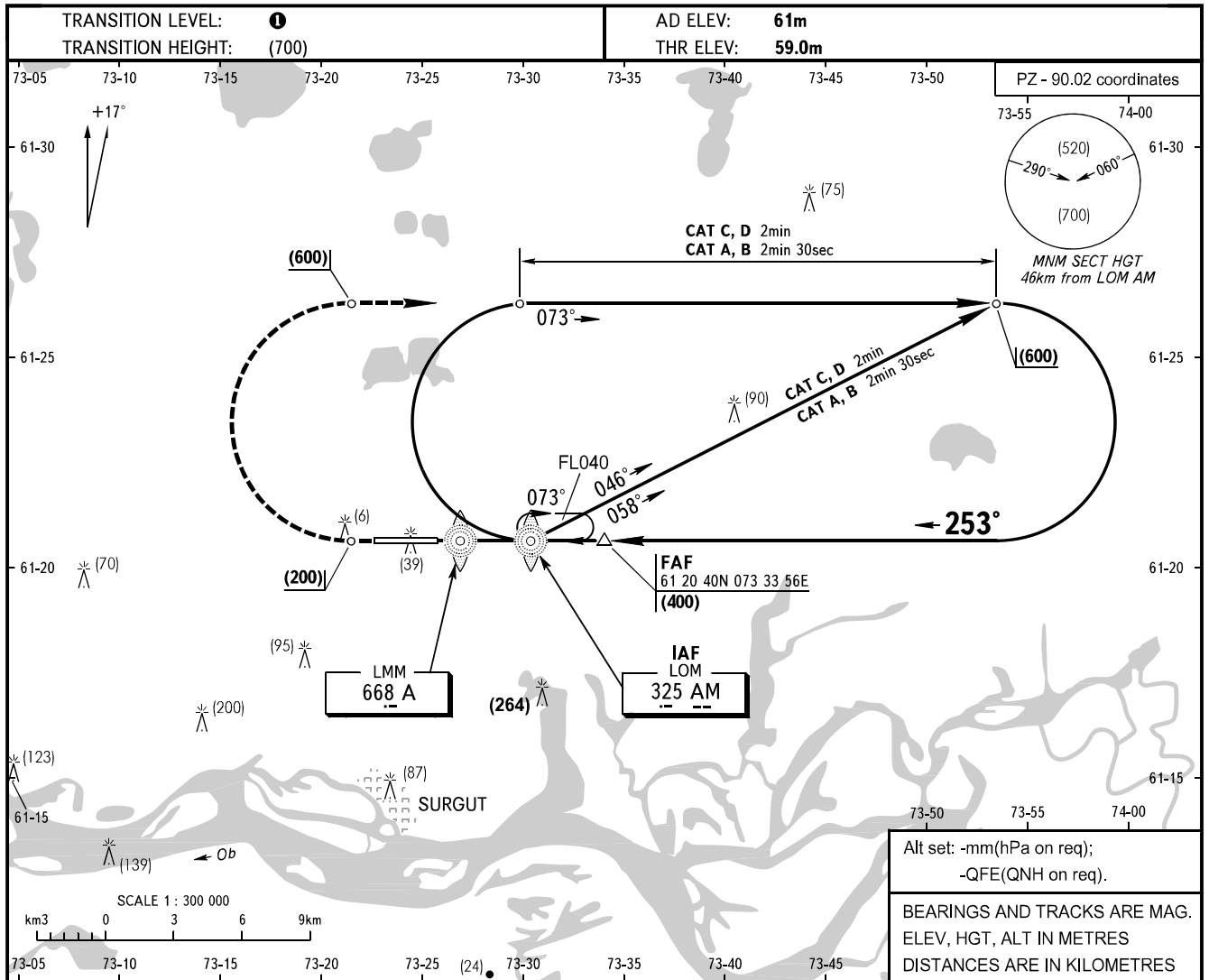


**INSTRUMENT
APPROACH
CHART - ICAO**

APPROACH	129.300
KRUG	120.300
TOWER	120.800

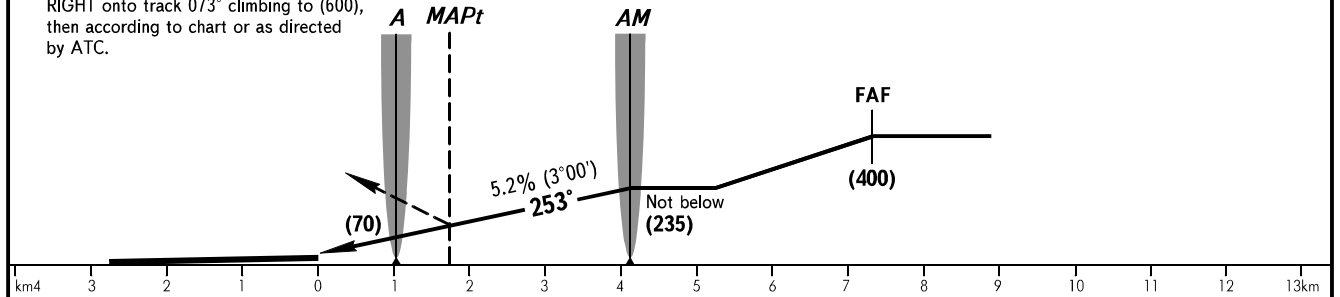
SURGUT, RUSSIA
SURGUT
2 NDB RWY 25



MISSED APPROACH

Climb on track 253° to (200), then turn RIGHT onto track 073° climbing to (600), then according to chart or as directed by ATC.

FAF is AZM 075° MAG DIST 8.4 from TAR (61 20 47N 073 24 30E).



OCA(H)	A	B	C	D
Straight-in	175(115)	175(115)	175(115)	175(115)
Approach				

01 TRANSITION LEVEL:
- FL040 when QFE is 742mm mercury column or above;
- FL050 when QFE is less than 742mm mercury column.

GROUND SPEED	km/h	120	150	180	210	240	270	300	330	360	390	420
RATE OF DESCENT	m/s	1.8	2.2	2.6	3.0	3.5	3.9	4.3	4.8	5.2	5.6	6.1