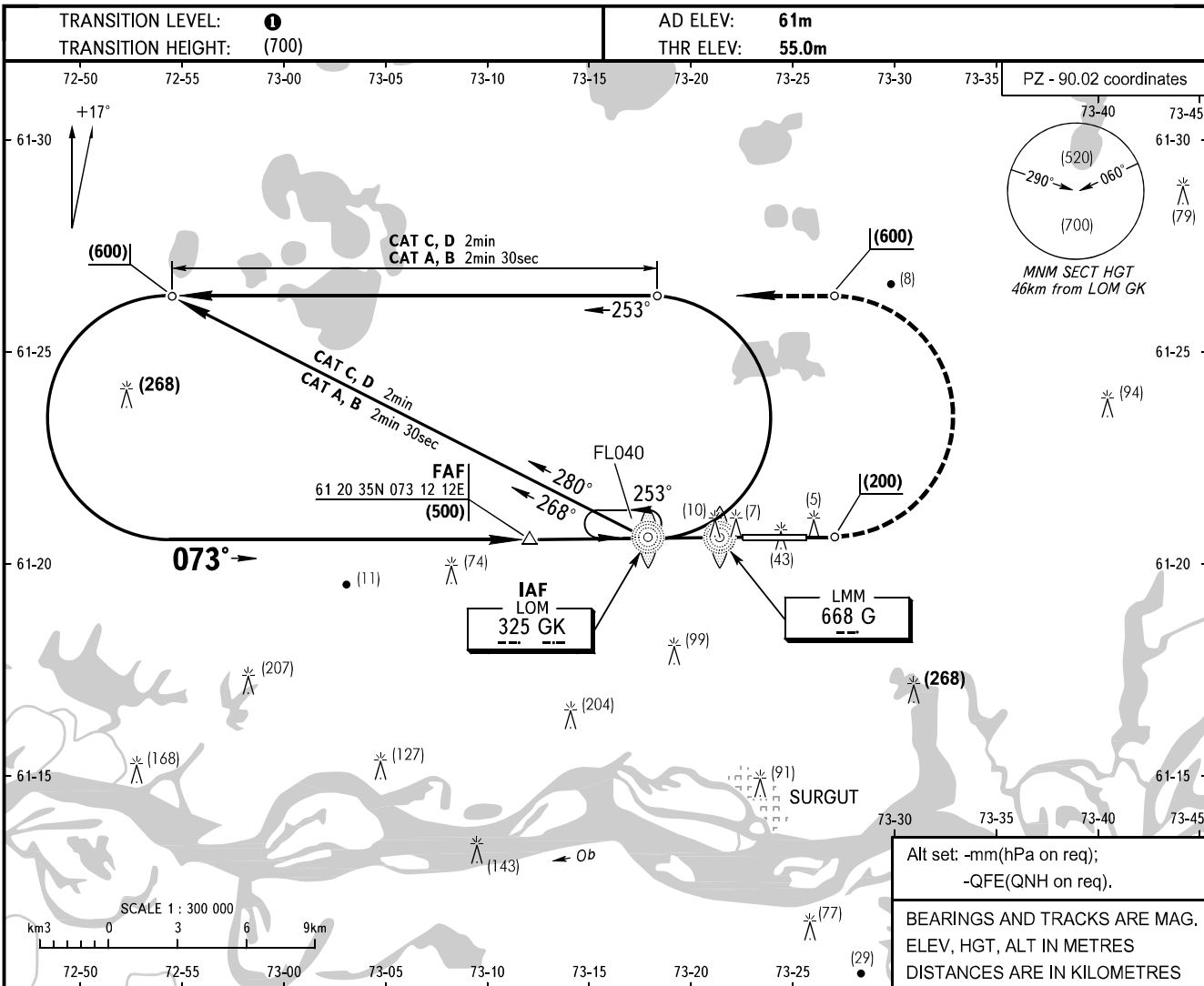


**INSTRUMENT
APPROACH
CHART - ICAO**

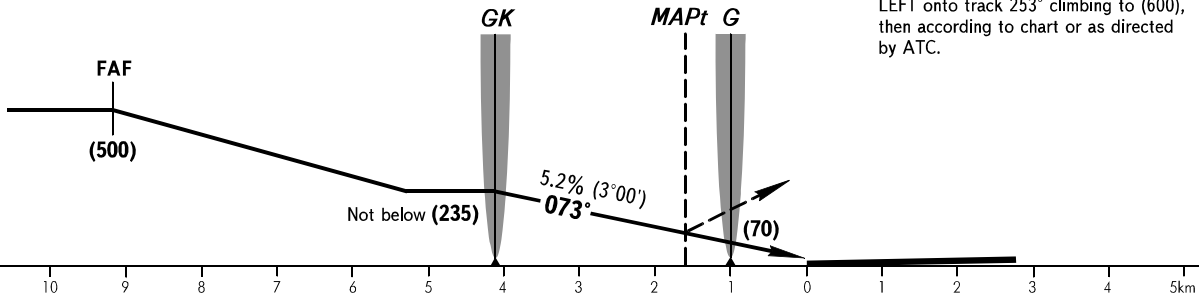
APPROACH	129.300
KRUG	120.300
TOWER	120.800

SURGUT, RUSSIA
SURGUT
2 NDB RWY 07



For 2 NDB, NDB approach FAF is AZM 252° MAG
DIST 10.9 from TAR (61 20 47N 073 24 30E).

MISSED APPROACH
Climb on track 073° to (200), then turn
LEFT onto track 253° climbing to (600),
then according to chart or as directed
by ATC.



OCA(H)		A	B	C	D							
Straight-in Approach		155(100)	155(100)	155(100)	155(100)							
GROUND SPEED	km/h	120	150	180	210	240	270	300	330	360	390	420
RATE OF DESCENT	m/s	1.8	2.2	2.6	3.0	3.5	3.9	4.3	4.8	5.2	5.6	6.1

TRANSITION LEVEL:
- FL040 when QFE is 742mm mercury column or above;
- FL050 when QFE is less than 742mm mercury column.

WARNING
LOM is at 51m left of RCL.

CHANGE: TRL