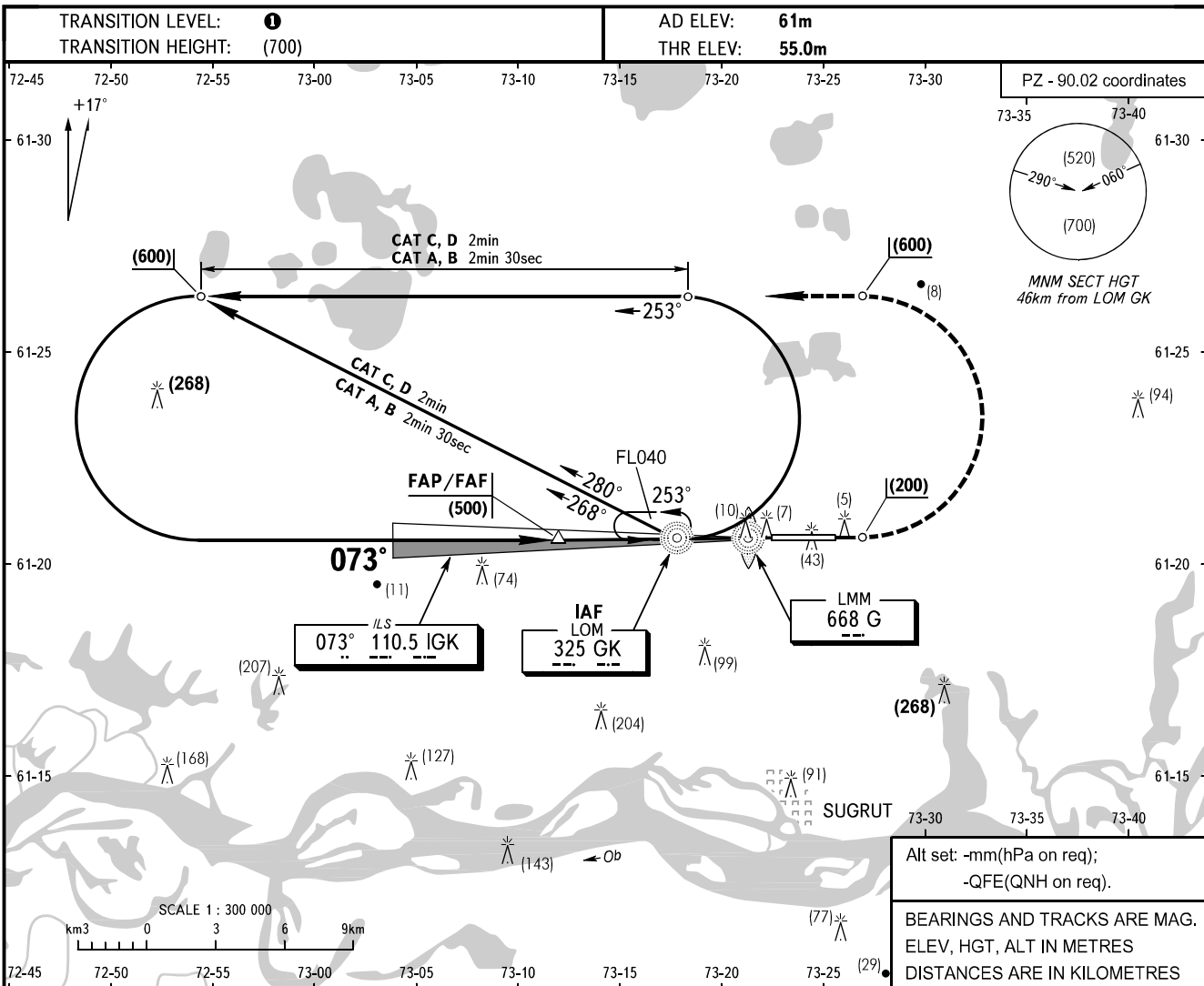


**INSTRUMENT
APPROACH
CHART - ICAO**

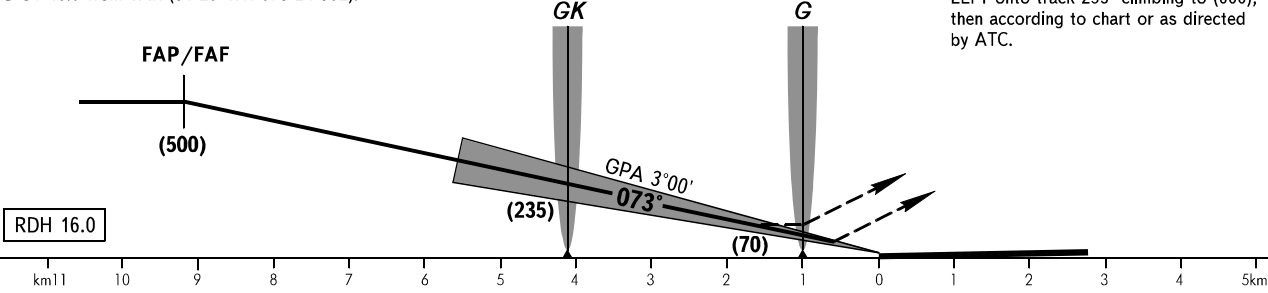
APPROACH	129.300
KRUG	120.300
TOWER	120.800

SURGUT, RUSSIA
SURGUT
ILS, LOC RWY 07



FAF 61 20 35N 073 12 12E
For LOC approach FAF is AZM 252° MAG
DIST 10.9 from TAR (61 20 47N 073 24 30E).

MISSED APPROACH
Climb on track 073° to (200), then turn LEFT onto track 253° climbing to (600), then according to chart or as directed by ATC.



OCA(H)		A	B	C	D								
Straight-in Approach	CAT I	113(58)	116(61)	119(64)	122(67)								
	LOC with FAF	155(100)	155(100)	155(100)	155(100)								
GROUND SPEED		km/h	120	150	180	210	240	270	300	330	360	390	420
RATE OF DESCENT (Grad 5.2%)		m/s	1.8	2.2	2.6	3.1	3.6	4.0	4.4	4.9	5.3	5.8	6.3

TRANSITION LEVEL:
- FL040 when QFE is 742mm mercury column or above;
- FL050 when QFE is less than 742mm mercury column.

WARNING
LOM is at 51m left of RCL.