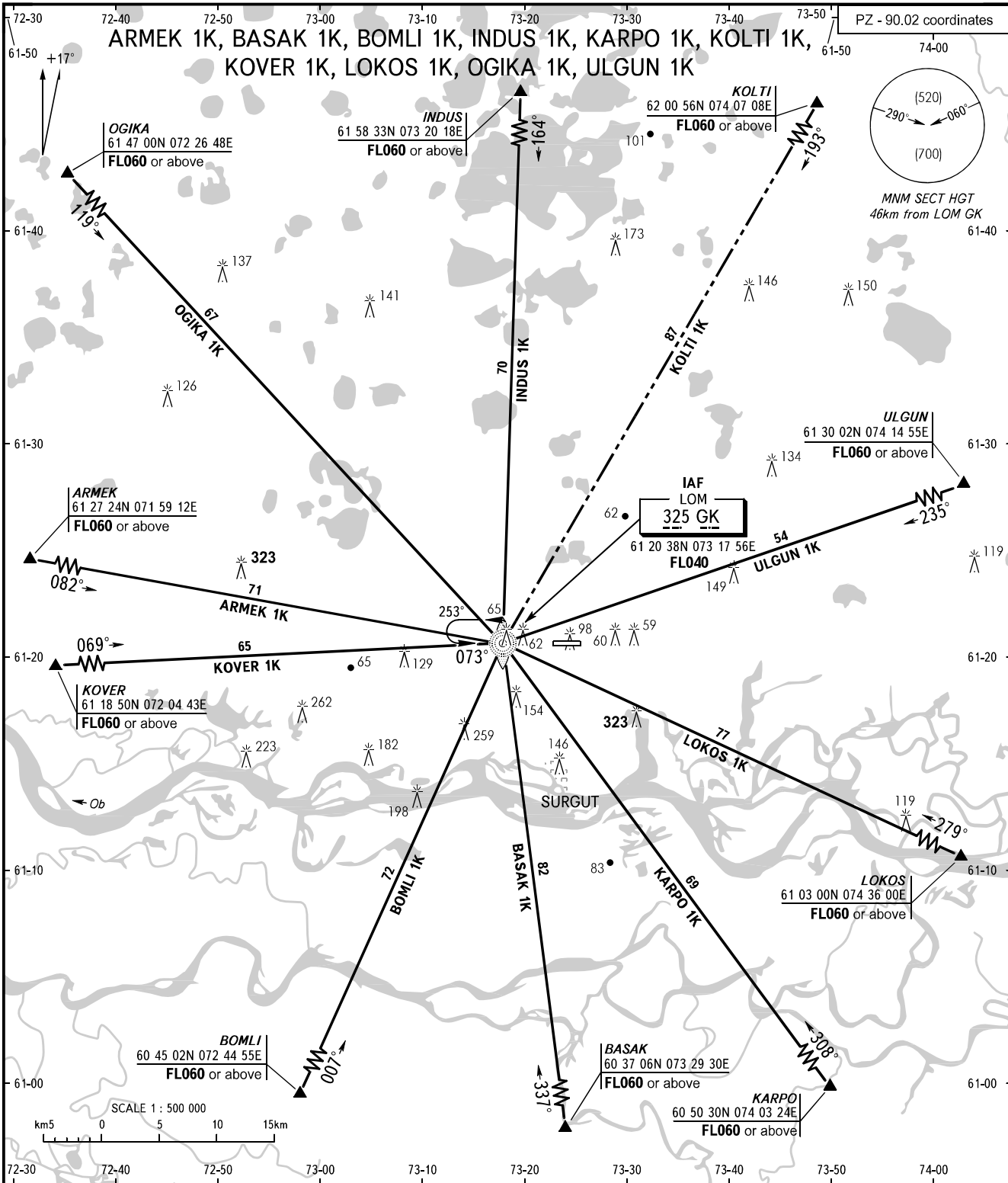


STANDARD ARRIVAL CHART  
INSTRUMENT (STAR) - ICAO

TRANSITION  
LEVEL : **1**

SURGUT, RUSSIA  
SURGUT  
RWY 07



KRUG **120.300**  
APPROACH **129.300**

**1** TRANSITION LEVEL:  
- FL040 when QFE is 742mm mercury column or above;  
- FL050 when QFE is less than 742mm mercury column.

BEARINGS AND TRACKS ARE MAGNETIC  
ALTITUDES, HEIGHTS AND ELEVATIONS ARE IN METRES  
DISTANCES ARE IN KILOMETRES

CHANGE: TRL