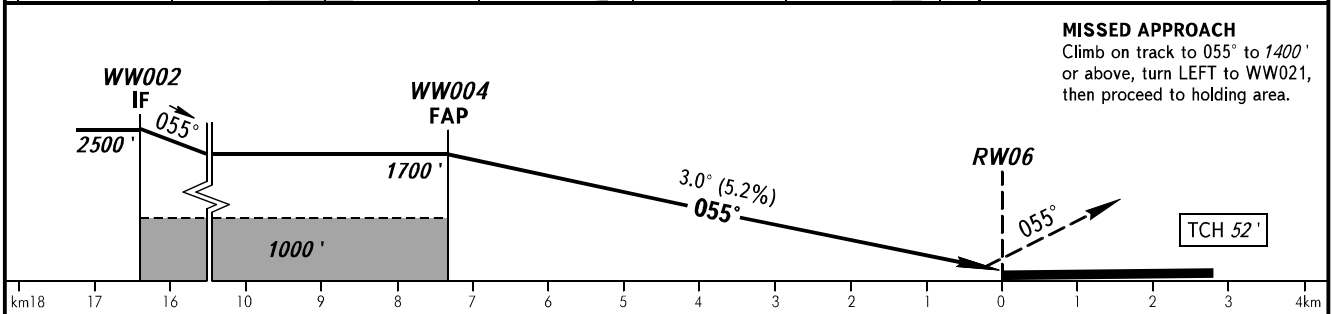
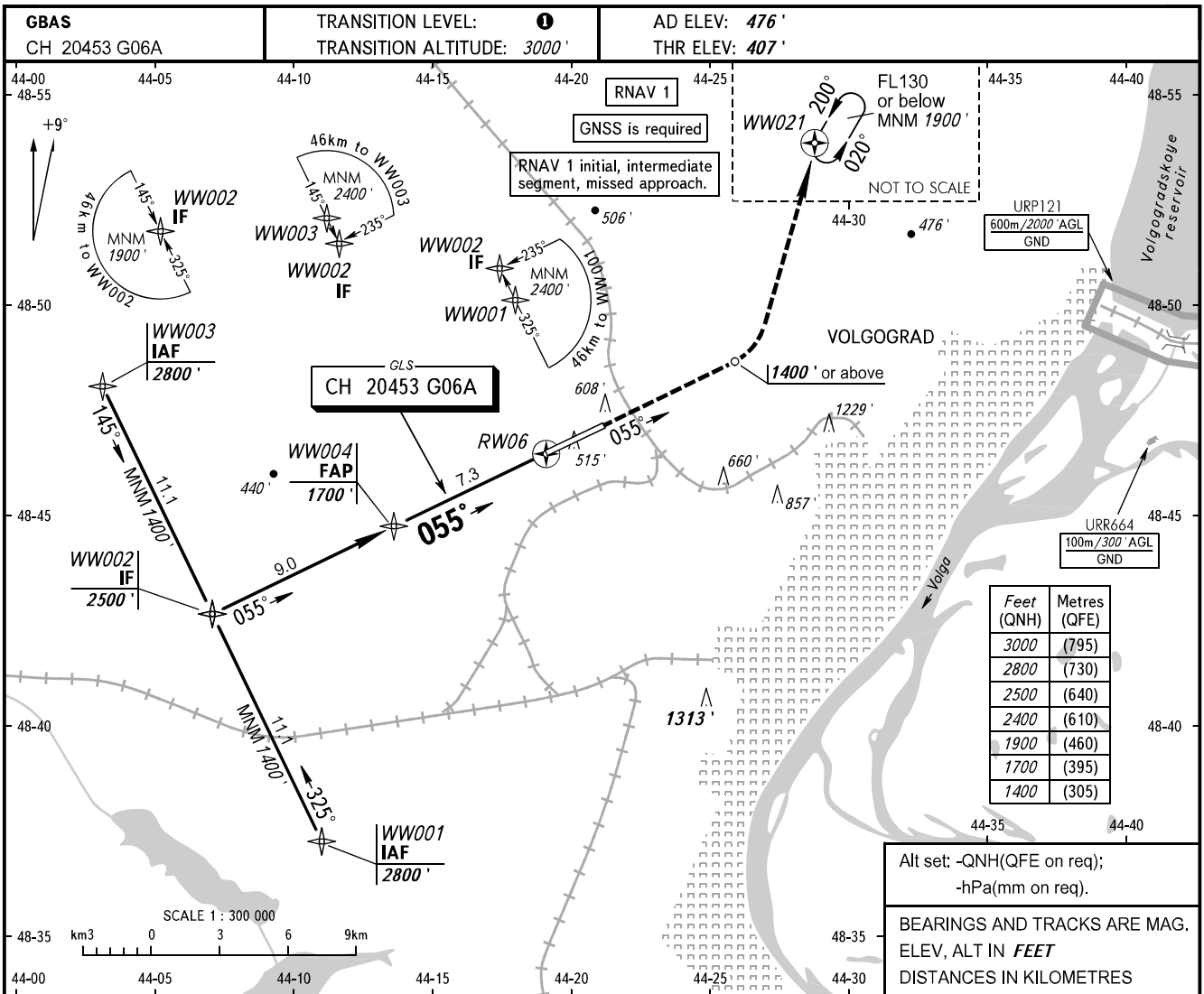


**INSTRUMENT
APPROACH
CHART - ICAO**

TOWER **128.000**

**VOLGOGRAD, RUSSIA
GUMRAK
GLS RWY 06**



OCA(H)		A	B	C	D	① TRANSITION LEVEL:					
Straight-in	CAT I	595' (189')	607' (201')	615' (209')	626' (220')	- FL040 when QNH is 1013 hPa (760mm mercury column) or above;					
	Approach					- FL050 when QNH is 977 hPa (733mm mercury column) or above, but less than 1013 hPa (760mm mercury column);					
Circling		910' (430')	970' (500')	1070' (600')	1260' (780')	- FL060 when QNH is less than 977 hPa (733mm mercury column).					
GROUND SPEED		km/h	150	180	210	240	270	300	330	360	390
RATE OF DESCENT		m/s	2.2	2.6	3.0	3.5	3.9	4.3	4.8	5.2	5.6
		ft/min	427	512	597	682	768	853	938	1024	1109

CHANGE: URP121