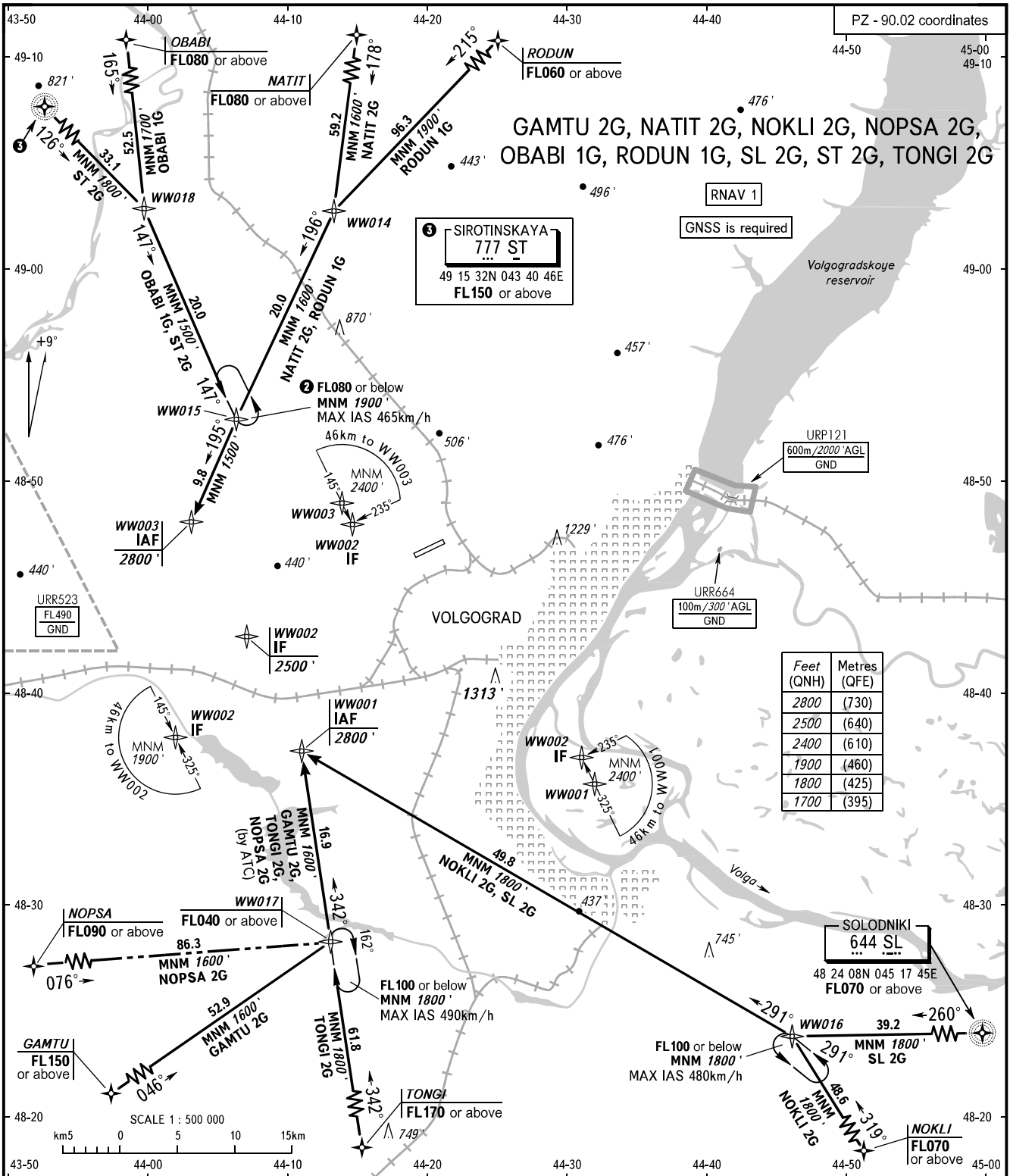


STANDARD ARRIVAL CHART  
INSTRUMENT (STAR) - ICAO

VOLGOGRAD, RUSSIA  
GUMRAK  
RNAV RWY 06

TRANSITION  
LEVEL: ①

PZ - 90.02 coordinates



APPROACH 125.300  
TOWER 128.000

- ① TRANSITION LEVEL:  
- FL040 when QNH is 1013 hPa (760mm mercury column) or above;  
- FL050 when QNH is 977 hPa (733mm mercury column) or above,  
but less than 1013 hPa (760mm mercury column);  
- FL060 when QNH is less than 977 hPa (733mm mercury column).
- ② When URR523 is active, MAX IAS 300 km/h FL080 or below.

BEARINGS AND TRACKS ARE MAGNETIC  
ALTITUDES AND ELEVATIONS IN FEET  
DISTANCES IN KILOMETRES

Alt set: -QNH(QFE on req);  
-hPa(mm on req).

CHANGE: URP121