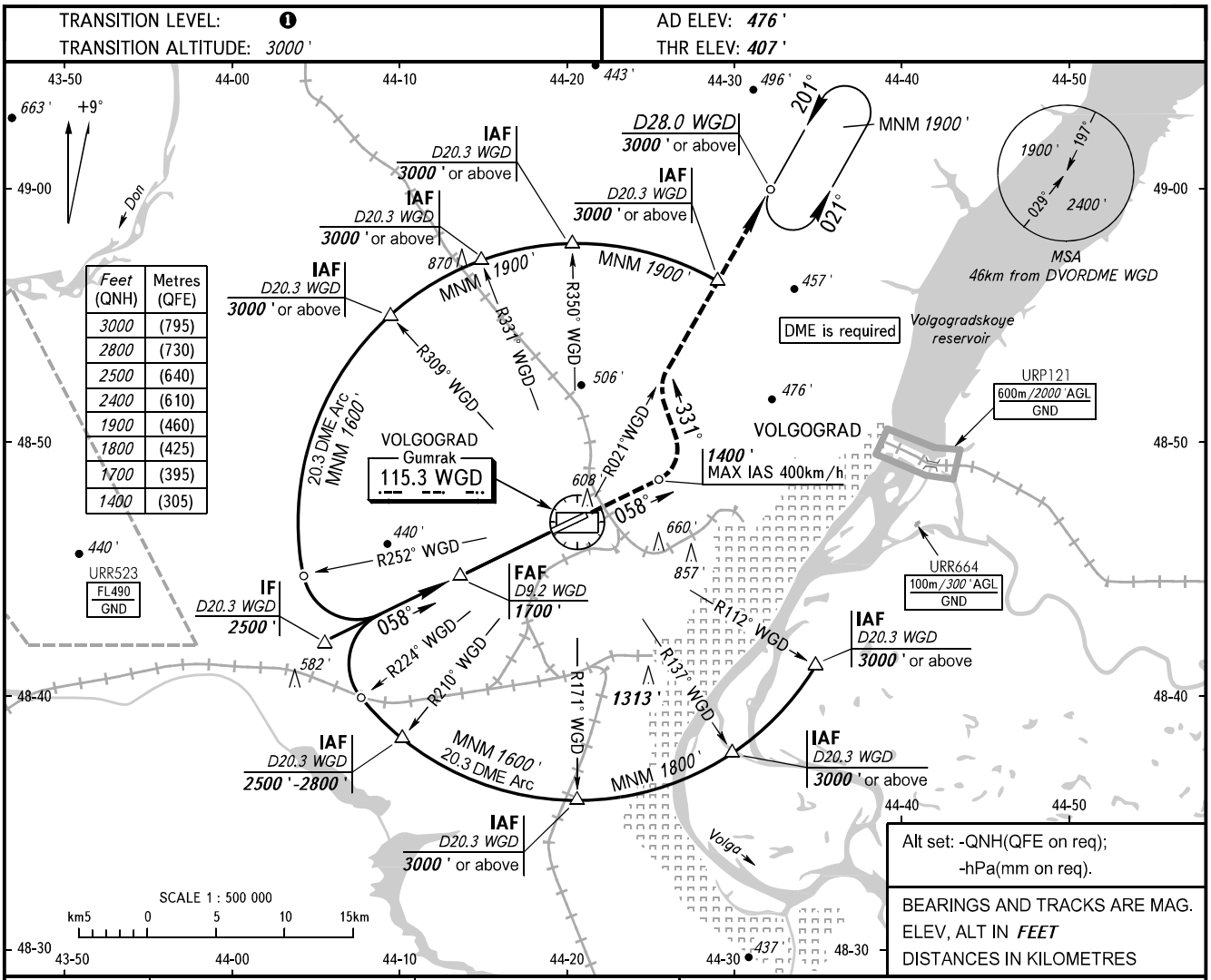


**INSTRUMENT
APPROACH
CHART - ICAO**

TOWER **128.000**

VOLGOGRAD, RUSSIA
GUMRAK
DVOR Y RWY 06

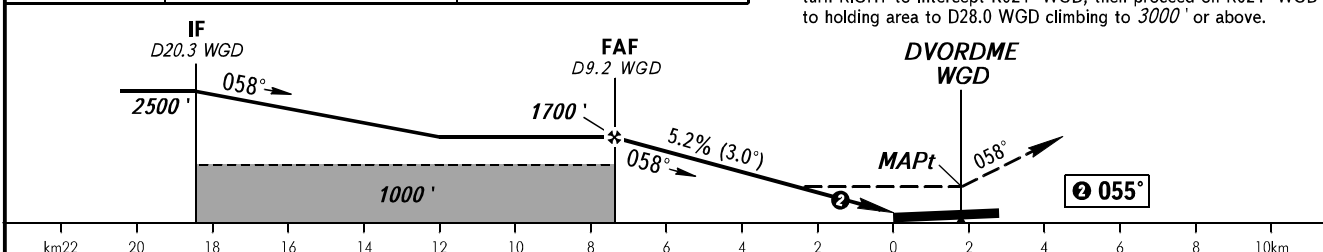


Feet (QNH)	Metres (QFE)
3000	(795)
2800	(730)
2500	(640)
2400	(610)
1900	(460)
1800	(425)
1700	(395)
1400	(305)

Alt set: -QNH(QFE on req);
-hPa(mm on req).
BEARINGS AND TRACKS ARE MAG.
ELEV, ALT IN FEET
DISTANCES IN KILOMETRES

DME WGD	8.0	6.0
ALTITUDE	1490'	1150'

MISSED APPROACH
Climb on track 058° to 1400', turn LEFT onto track 331°, turn RIGHT to intercept R021° WGD, then proceed on R021° WGD to holding area to D28.0 WGD climbing to 3000' or above.



OCA(H)	A	B	C	D
Straight-in	810' (400')	810' (400')	810' (400')	810' (400')
Approach				
Circling	910' (430')	970' (500')	1070' (600')	1260' (780')

TRANSITION LEVEL:
- FLO40 when QNH is 1013 hPa (760mm mercury column) or above;
- FLO50 when QNH is 977 hPa (733mm mercury column) or above, but less than 1013 hPa (760mm mercury column);
- FLO60 when QNH is less than 977 hPa (733mm mercury column).
WARNING:
1. Final approach track is offset by 3° from the runway centre line.
2. MAPt at DVORDME WGD. Timing not authorized for defining MAPt.
Turn before passing MAPt is PROHIBITED.

GROUND SPEED	km/h	150	180	210	240	270	300	330	360	390
RATE OF DESCENT	m/s	2.2	2.6	3.0	3.5	3.9	4.3	4.8	5.2	5.6
	ft/min	427	512	597	682	768	853	938	1024	1109

CHANGE: URP121