

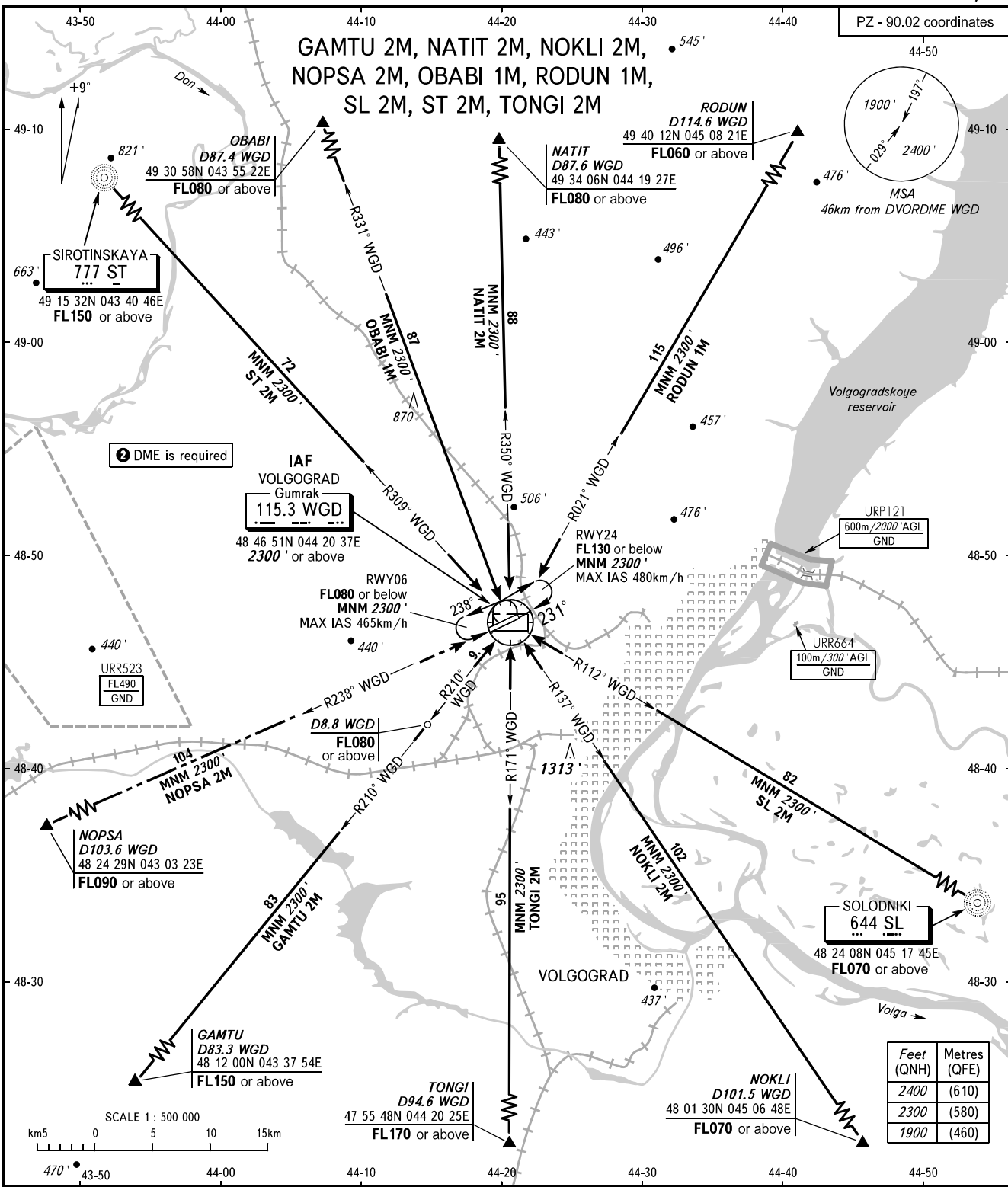
STANDARD ARRIVAL CHART
INSTRUMENT (STAR) - ICAO

VOLGOGRAD, RUSSIA

GUMRAK

RWY 06/24

TRANSITION
LEVEL: **1**



APPROACH **125.300**
TOWER **128.000**

- 1** TRANSITION LEVEL:
- FLO40 when QNH is 1013 hPa (760mm mercury column) or above;
- FLO50 when QNH is 977 hPa (733mm mercury column) or above, but less than 1013 hPa (760mm mercury column);
- FLO60 when QNH is less than 977 hPa (733mm mercury column).

NOTE
2 For STAR GAMTU 2M, NOKLI 2M, NOPSA 2M, OBABI 1M, NATIT 2M, RODUN 1M, TONGI 2M.

BEARINGS AND TRACKS ARE MAGNETIC
ALTITUDES AND ELEVATIONS IN FEET
DISTANCES IN KILOMETRES

Alt set: -QNH(QFE on req);
-hPa(mm on req).

CHANGE: URP121