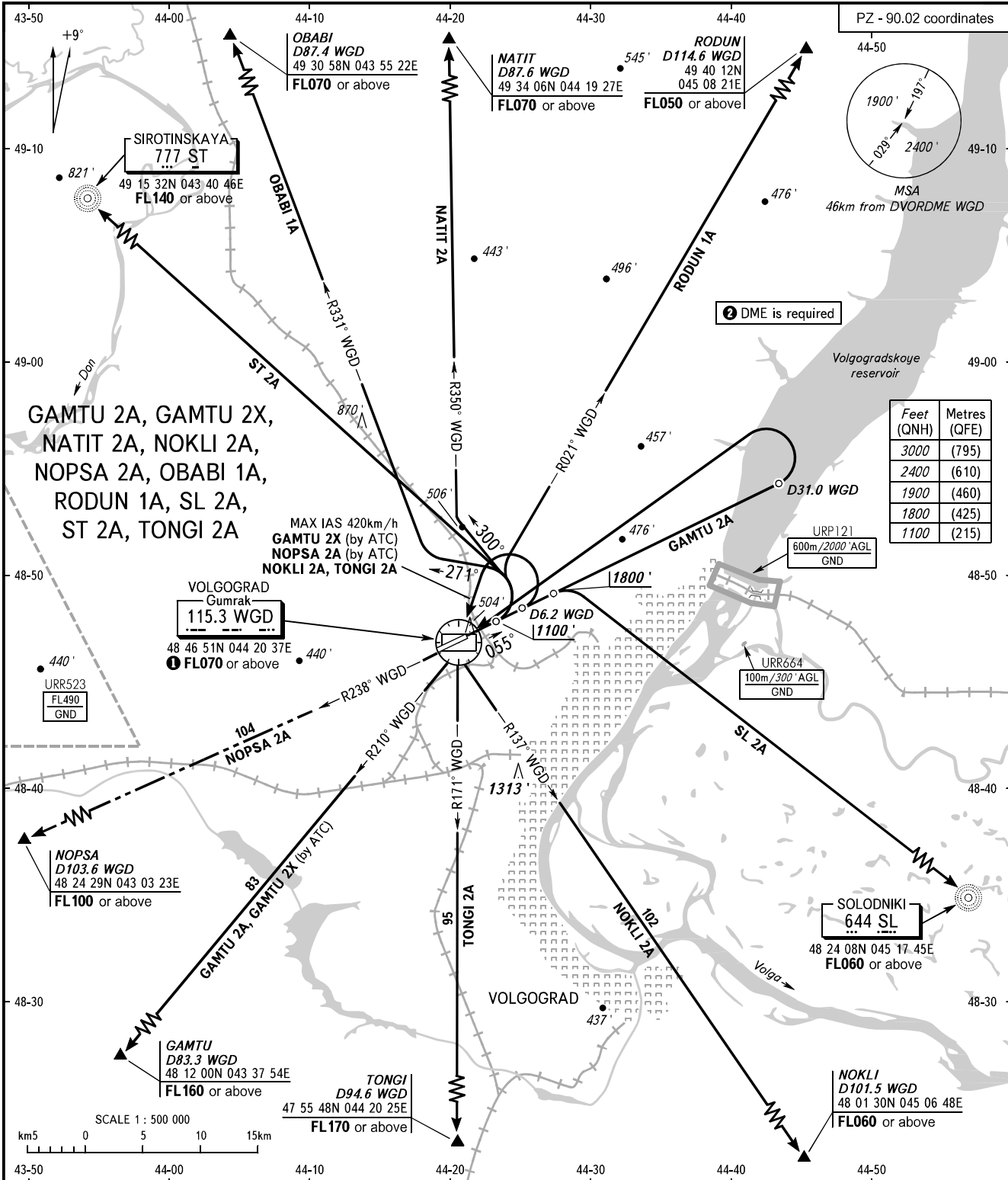


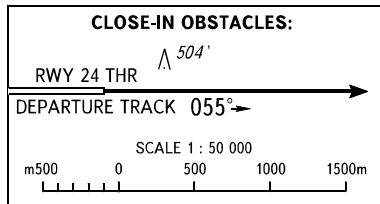
STANDARD DEPARTURE CHART
INSTRUMENT (SID) - ICAO

TRANSITION
ALTITUDE: 3000'

VOLGOGRAD, RUSSIA
GUMRAK
RWY 06



TOWER APPROACH 128.000
125.300



The minimum climb gradients are as follows (required due to the airspace structure):

- 4.3% up to FL160 for SID GAMTU 2X;
- 5.2% up to FL140 for SID ST 2A;
- 3.8% up to FL170 for SID TONGI 2A.

NOTE:

- 1 For SID GAMTU 2A.
- 2 For SID GAMTU 2A, GAMTU 2X, NOKLI 2A, NOPSA 2A, OBABI 1A, NATIT 2A, RODUN 1A, TONGI 2A.

BEARINGS AND TRACKS ARE MAGNETIC
ALTITUDES AND ELEVATIONS IN FEET
DISTANCES IN KILOMETRES

Alt set: -QNH(QFE on req);
-hPa(mm on req).

CHANGE: URP121