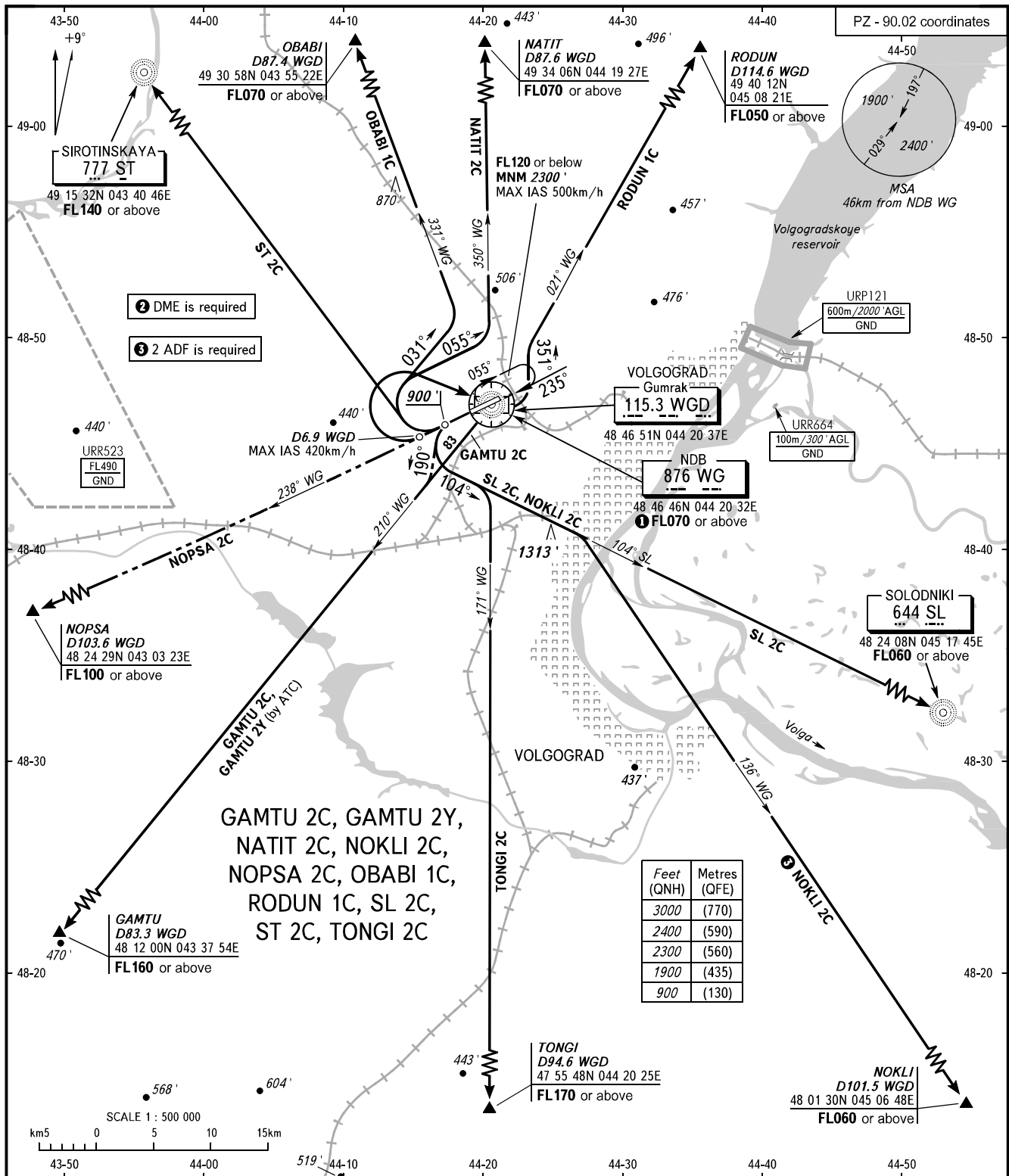


STANDARD DEPARTURE CHART
INSTRUMENT (SID) - ICAO

TRANSITION
ALTITUDE: 3000'

VOLGOGRAD, RUSSIA
GUMRAK
RWY 24



TOWER 128.000
APPROACH 125.300

The minimum climb gradients are as follows (required due to the airspace structure):
- 5.8% up to FL160 for SID GAMTU 2Y;
- 5.6% up to FL140 for SID ST 2C;
- 5.1% up to FL170 for SID TONGI 2C.

NOTE:

- 1 For SID GAMTU 2C: climb in holding area to FL070 or above, then proceed to CRP GAMTU.
- 2 For SID GAMTU 2C, GAMTU 2Y, NOKLI 2C, NOPSA 2C, OBABI 1C, NATIT 2C, RODUN 1C, TONGI 2C.

BEARINGS AND TRACKS ARE MAGNETIC
ALTITUDES AND ELEVATIONS IN FEET
DISTANCES IN KILOMETRES

Alt set: -QNH(QFE on req);
-hPa(mm on req).