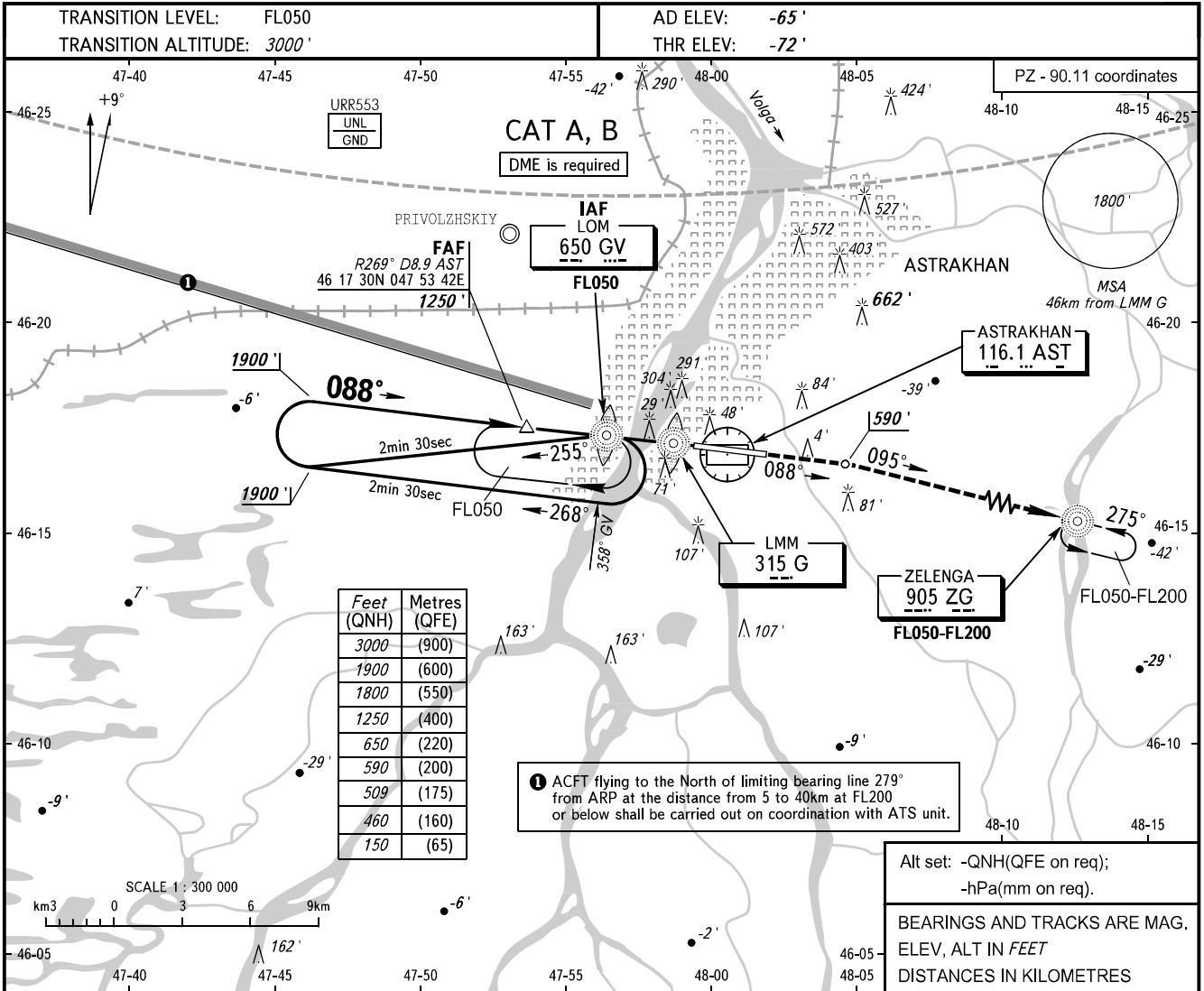


**INSTRUMENT
APPROACH
CHART - ICAO**

ASTRAKHAN, RUSSIA
ASTRAKHAN
NDB X RWY 09

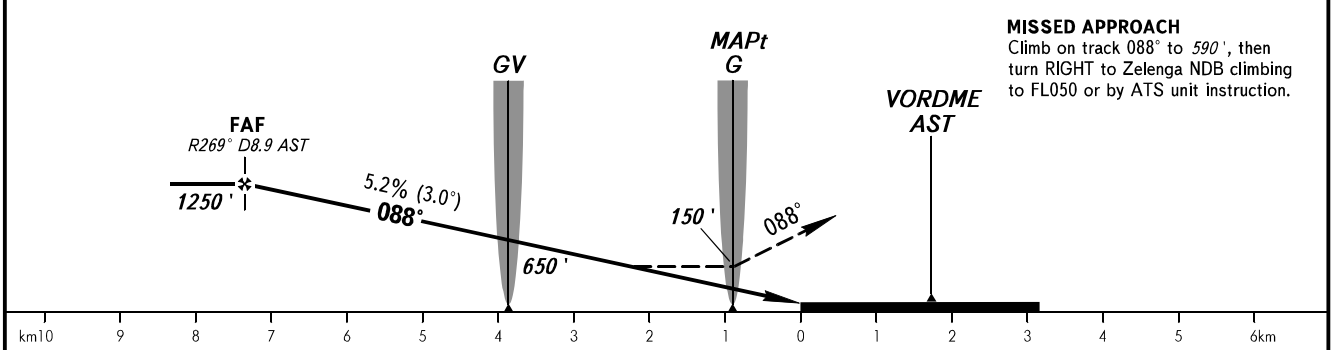
RADAR	120.600
TOWER	118.600



Feet (QNH)	Metres (QFE)
3000	(900)
1900	(600)
1800	(550)
1250	(400)
650	(220)
590	(200)
509	(175)
460	(160)
150	(65)

① ACFT flying to the North of limiting bearing line 279° from ARP at the distance from 5 to 40km at FL200 or below shall be carried out on coordination with ATS unit.

Alt set: -QNH(QFE on req);
-hPa(mm on req).
BEARINGS AND TRACKS ARE MAG.
ELEV, ALT IN FEET
DISTANCES IN KILOMETRES



OCA(H)		A	B	C	D
Straight-in Approach	NDB (LMM)	With FAF	460' (525')	460' (525')	
		WO FAF	509' (575')	509' (575')	

WARNING
Heavy turbulence with down-draughts and windshear may be expected on final.
NOTE:
1. Race track procedure shall be carried out after STAR UP 4A, OMIRA 4A.
2. Reversal procedure shall be carried out after STAR ZG 4A.

GROUND SPEED	km/h	150	180	210	240	270	300	330	360	390
FAF-MAPt 6444m	min:sec	2:35	2:09	1:50	1:37	1:26	1:17	1:10	1:04	0:59
RATE OF DESCENT	m/s	2.2	2.6	3.0	3.5	3.9	4.3	4.8	5.2	5.6
	ft/min	427	512	597	682	768	853	938	1024	1109

CHANGE: New chart