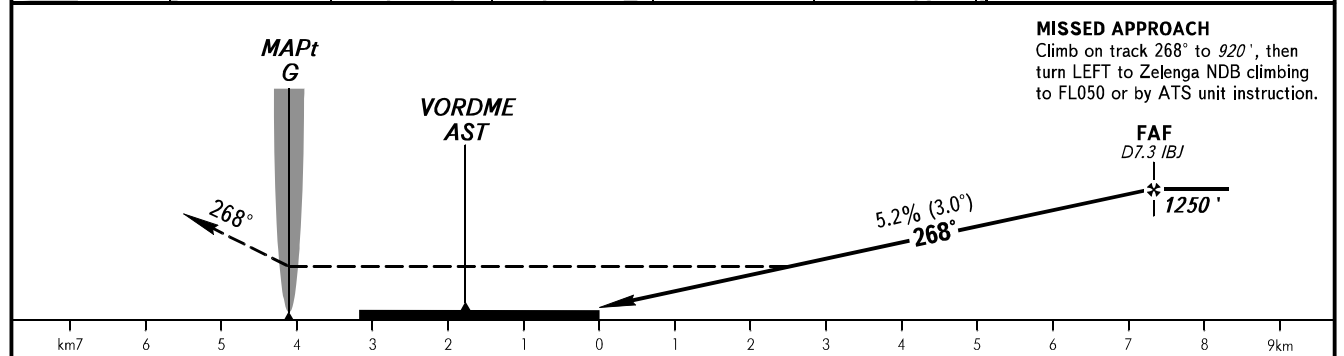
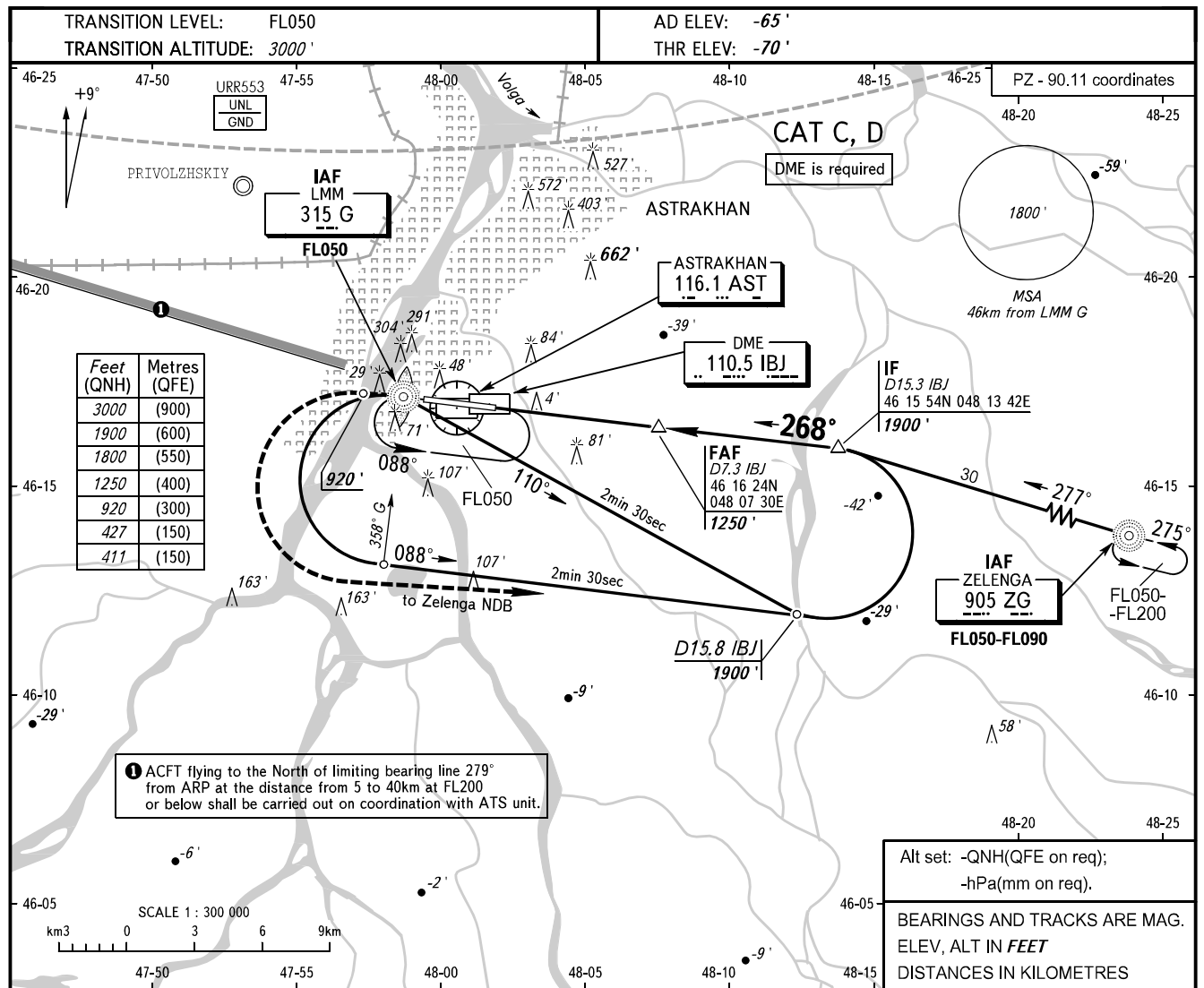


**INSTRUMENT
APPROACH
CHART - ICAO**

RADAR	120.600
TOWER	118.600

ASTRAKHAN, RUSSIA
ASTRAKHAN
NDB Y RWY 27



OCA(H)		A	B	C	D					
Straight-in Approach	With FAF			411' (493')	411' (493')					
	WO FAF			427' (493')	427' (493')					
GROUND SPEED	km/h	150	180	210	240	270	300	330	360	390
FAF-THR 7350m	min:sec	2:56	2:27	2:06	1:50	1:38	1:28	1:20	1:13	1:08
RATE OF DESCENT	m/s	2.2	2.6	3.0	3.5	3.9	4.3	4.8	5.2	5.6
	ft/min	427	512	597	682	768	853	938	1024	1109

WARNING
Heavy turbulence with down-draughts and windshear may be expected on final.
NOTE:
1. Race track procedure shall be carried out after STAR UP 2A.
2. Reversal procedure shall be carried out after STAR OMIRA 2A.